



## **NBN Atlas**

Mel Hardie, Will Millard, Rhiann Stock – data team

Helen Manders-Jones, Keith Raven, Tony Ross – development team

## **300 million records on the NBN Atlas!**

This major milestone has been achieved thanks to all our data partners. With the NBN Atlas' treasure trove of wildlife data accessible to all, we can measure our progress in reversing biodiversity loss and “making data work for nature”. Please come and talk to us about: Future data and FAIR data; Support and Help Guides and What we have achieved together. We'd love to have your input.

<https://nbnatlas.org/>



# Field Studies Council

Outdoor Learning Experiences

## **Field Studies Council**

Emma Wood

Field Studies Council is an environmental education charity, inspiring and teaching people about the natural world through biodiversity courses, identification resources, and school trips.

<https://www.field-studies-council.org/>



## **Better Biodiversity Data project**

Christine Tansey, Emily Baker, Bethany Fairbairn, Josh Keenan

Come and meet the project team (NBN Scotland), based at the NBN Trust, that is managing this partnership project funded by Scottish Government and NatureScot to develop a strategic approach to the collection, collation and sharing of biological data in Scotland. They will be showcasing biodiversity data stories from contributors across Scotland.

<https://nbn.org.uk/about-us/where-we-are/scotland-and-the-better-biodiversity-data-project/>



## **Natural Apptitude / Coreo**

Dave Kilbey

Natural Apptitude is the UK's leading producer of data collection software for the ecology and conservation sectors. Our citizen science orientated projects include the Big Butterfly Count, Mammal Mapper and INNS Mapper. Our data collection platform, Coreo, supports hundreds of ecological consultancies and other organisations with field-based surveys, including the UKHab Survey/BNG.

<https://www.natural-apptitude.co.uk/>

The Dynamics logo consists of the word "dynamics" in a bold, lowercase, sans-serif font. The text is white and is centered within a dark blue rounded rectangular background.

**dynamics**

## **Dynamics Limited**

Michelle Bhoghal

A leading partner in Business Central and Retail Management Solutions, Dynamics specialise in Microsoft Business Central and LS Retail to unlock business potential and streamline operations. Committed to CSR, Dynamics integrates sustainability and ethical practices into its business solutions and company culture.

[www.dynamics.co.uk](http://www.dynamics.co.uk)



## **Futures Wild**

Matt Rogers, Stefan Ferguson, Ben Moore

We design, build and run bespoke data platforms for innovators protecting nature, including Birdlife International and the IUCN. We combine data strategy, experience design and end-to-end digital product development to help transform data into impact.

[www.futureswild.com](http://www.futureswild.com)



## **Tanyptera project**

Leanna Dixon, Gary Hedges, Josh Boe

The Tanyptera Project is a long-term invertebrate-focused initiative promoting recording and conservation.

World Museum holds a scientifically and historically important national collection of over a million specimens from around the world.

[www.northwestinvertebrates.org.uk](http://www.northwestinvertebrates.org.uk)

<https://www.liverpoolmuseums.org.uk/collections/natural-history>



## **Designing Nature Networks**

Carlos Bedson

Using species record data from NBN Atlas and open source environmental data, we prepared England-wide species distribution models, referencing current and future climate conditions (SSP 245, year 2050). These informed omni-directional circuit theory analysis, identifying high value ecological connectivity areas, to inform land use planning to facilitate species movements and population dispersal processes.

[https://www.researchgate.net/publication/383145593\\_Designing\\_Nature\\_Networks](https://www.researchgate.net/publication/383145593_Designing_Nature_Networks)



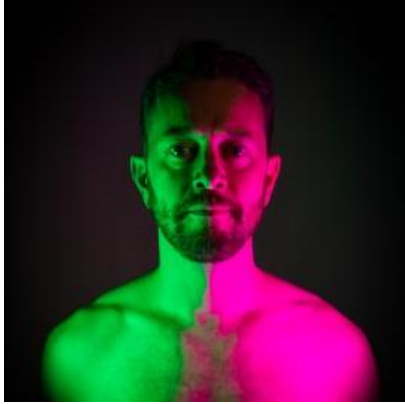


## **Seasearch**

ML Anderson

Seasearch helps recreational divers and snorkeller do their bit for the marine environment by enabling them to collect useful information about marine habitats, plants and animals around the UK and Ireland, making a difference to what we know about marine life.

[www.seasearch.org.uk/](http://www.seasearch.org.uk/)



### **Caleb Parkin - Field Poet**

Caleb Parkin will be acting as 'Field Poet' at the NBN Conference 2024, attending sessions to gather the poetry attendees are already speaking. He'll also be inviting you to take part in shared poem-making to explore how we learn to speak the 'love languages' of species and landscapes we care about. All this will be woven into a poem, presented during the closing session.

Please come and speak to Caleb and share in poem-making throughout the day.

<https://ninearchespress.com/publications/poetry-collections/mingle>