

A dip in the Data Lake, insights on the NBN Atlas

Mel Hardie

Biodiversity Data Manager NBN Atlas

21 November 2024

A bit about me...

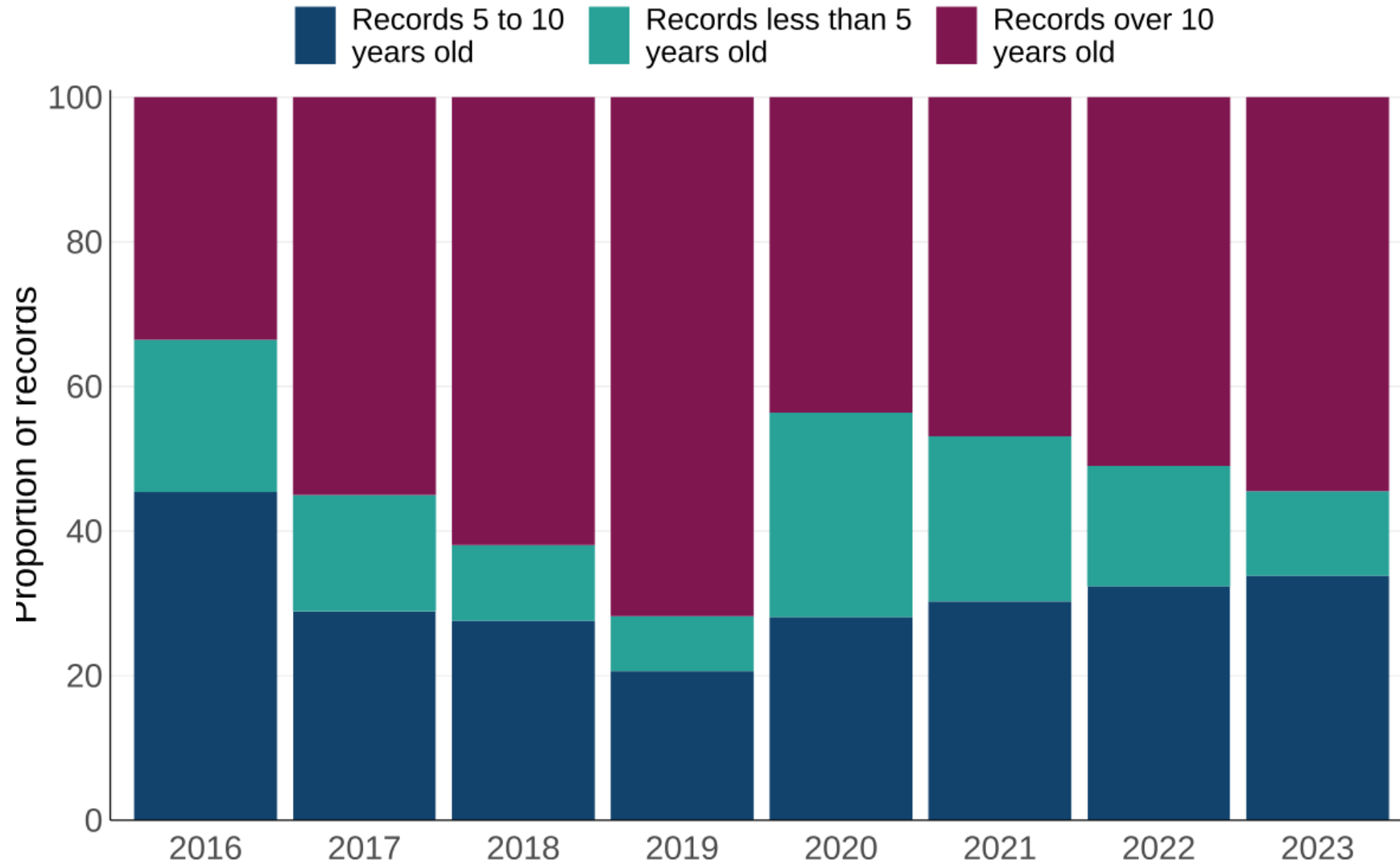


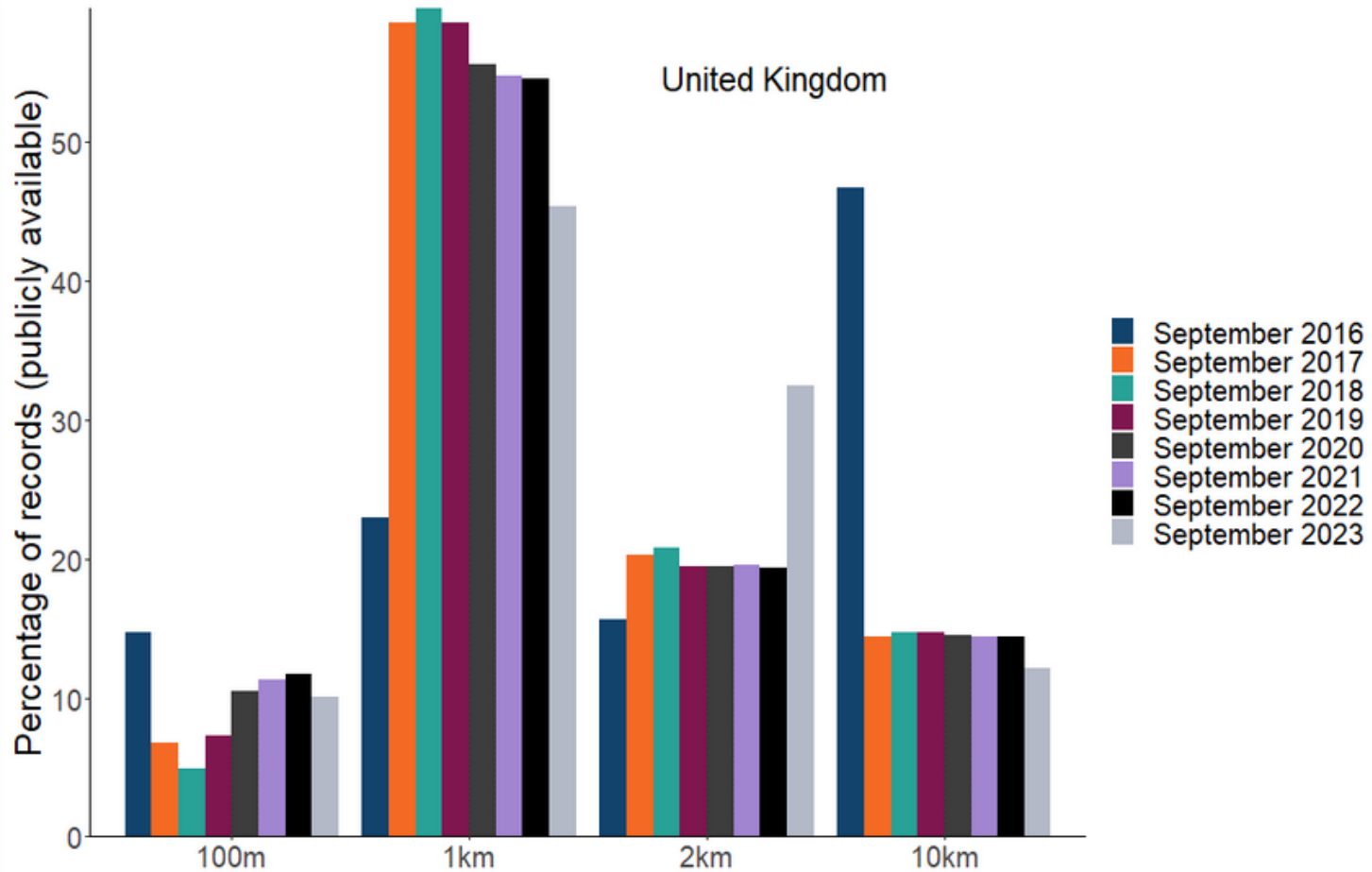


**300 million
records**



The NBN Atlas today – 300 million









Priority Enhancements

Based on your needs and requirements. Improve the service for all



Access Controls

First major enhancement at final testing stage in the live system.



Data filters & Searches

Next phases of the project now in development to help everyone quickly access their common searches and the data for decision-making



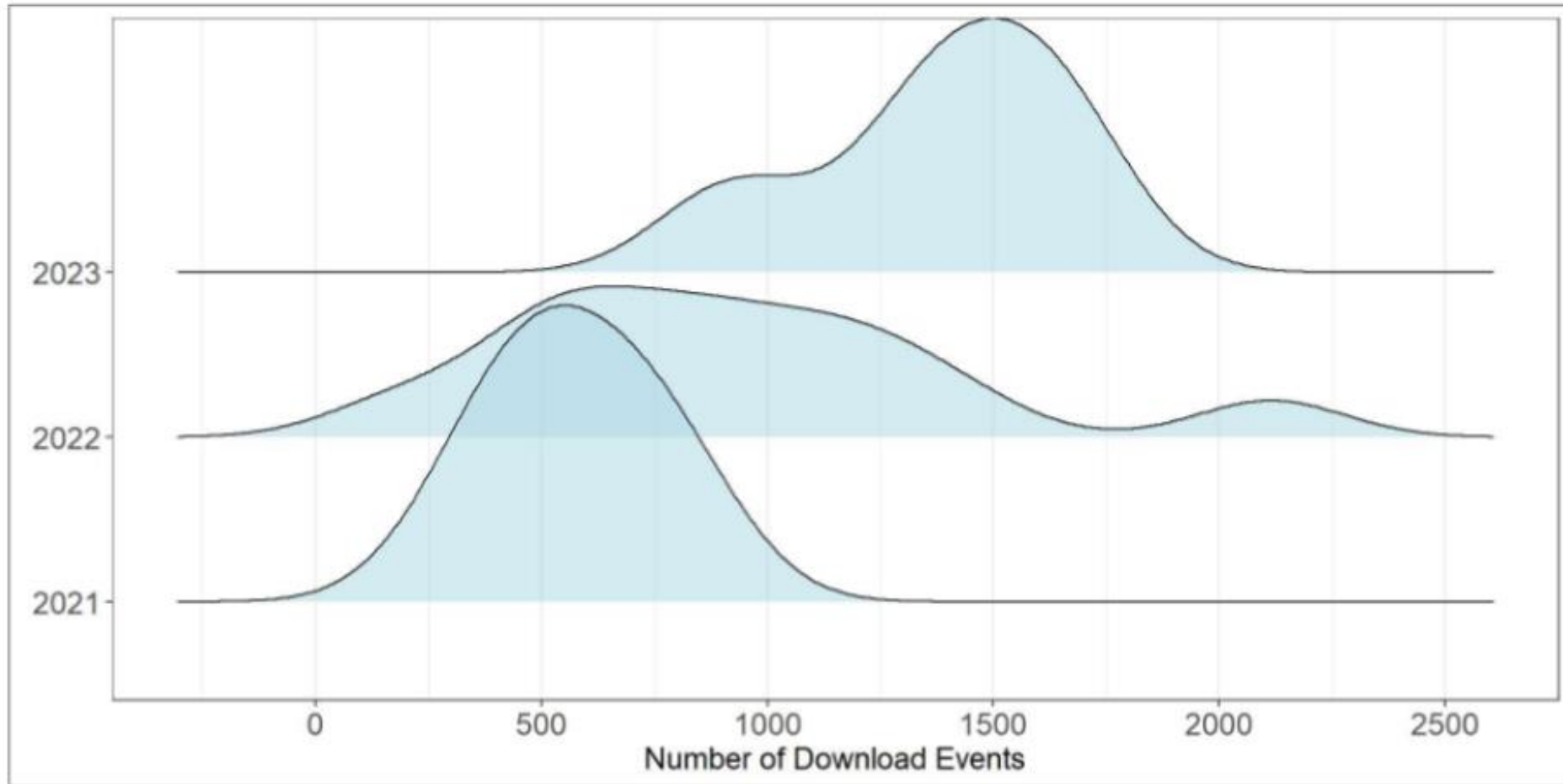
Mapping & Data Types

A major review of the maps and spatial portal for analysis in the NBN Atlas planned for next year. Come and talk to us if you have major requirements.

How is the NBN Atlas used?

16/10/2024, 11:31

E1. Biodiversity data for decision making



Species Occurrence Data flow

Recording schemes and societies,
Wildlife Trusts



Government agencies, eNGOs, LERCs



DASSH

Marine Biological Association

Ad-hoc sightings

iRecord



NBN atlas



OCEAN BIODIVERSITY
INFORMATION SYSTEM

Museums and botanic gardens



Royal
Botanic Garden
Edinburgh



GBIF

Global Biodiversity
Information Facility

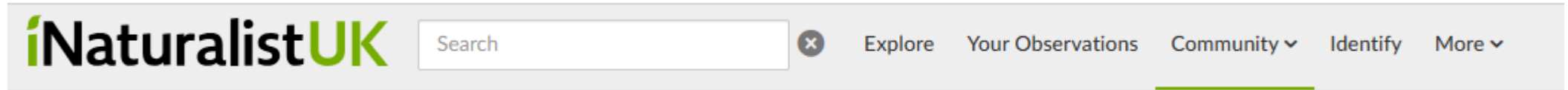




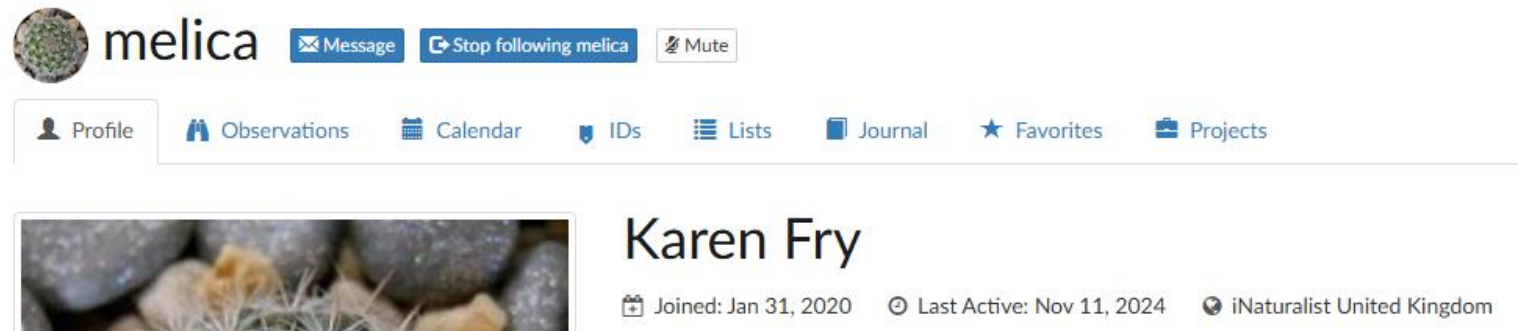
Select the best licence for observations



Affiliate to iNaturalistUK



Tell us who you are!

The image shows a user profile for 'melica' on iNaturalist. It includes a profile picture of a plant, the name 'melica', and buttons for 'Message', 'Stop following melica', and 'Mute'. Below the name is a horizontal menu with icons and labels for 'Profile', 'Observations', 'Calendar', 'IDs', 'Lists', 'Journal', 'Favorites', and 'Projects'. Underneath the menu is a small photograph of a plant and the name 'Karen Fry'. At the bottom of the profile section, it shows 'Joined: Jan 31, 2020', 'Last Active: Nov 11, 2024', and 'iNaturalist United Kingdom'.

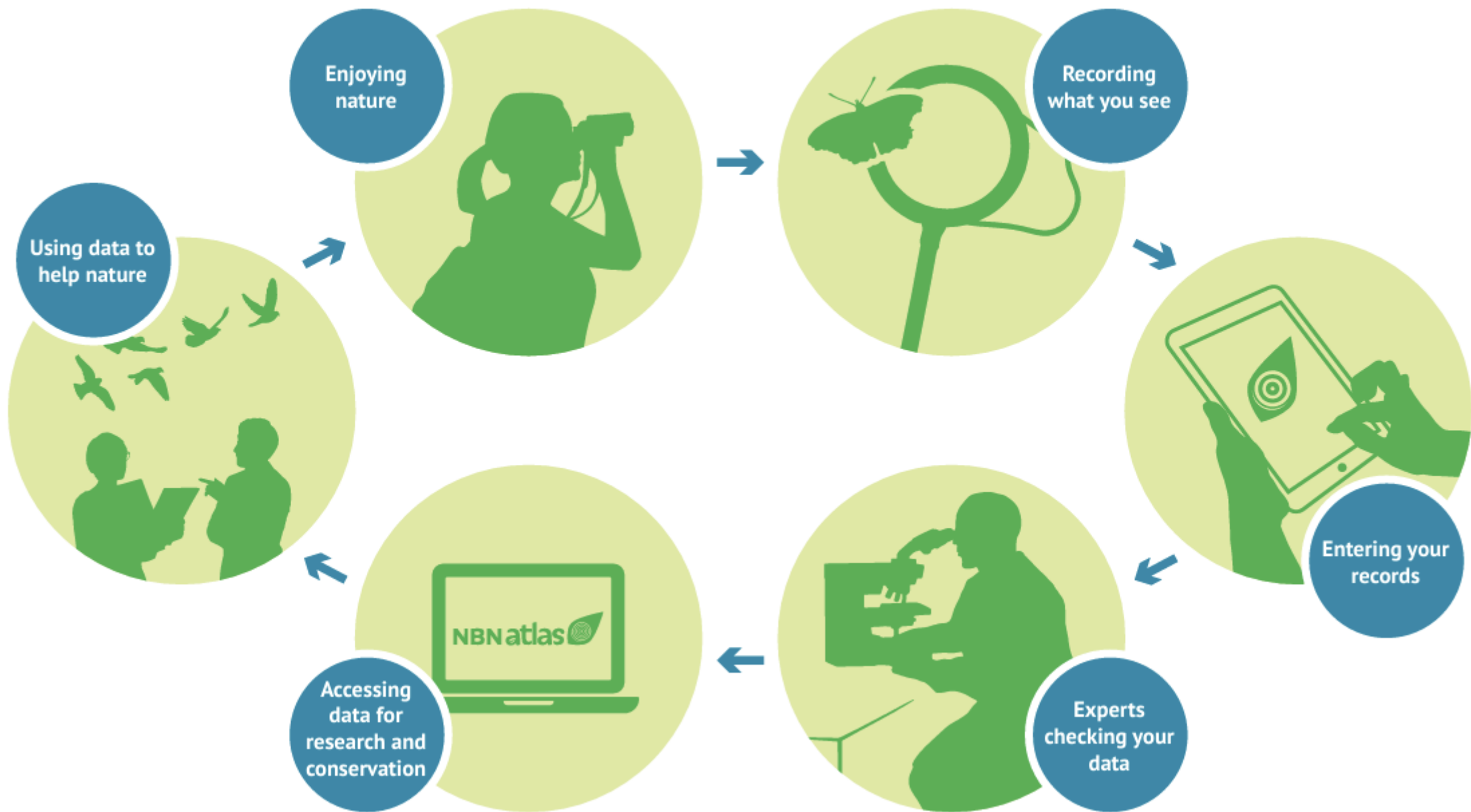
MAKING DATA WORK FOR NATURE

2022 – 2027

The National Biodiversity Network Trust's Strategy



Making your data work for nature



S

STRENGTHS

- Strong partnership of contributing organisations
- Strong foundational data and links into wider national and international community
- Big Data handling capabilities

W

WEAKNESSES

- Lack of sustainable funding for infrastructure and team
- Lack of long term policy and planning for program
- Lack of support from some sectors in community
- Lack of consistent data recording software for organisations (no replacement for Recorder 6).

O

OPPORTUNITIES

- Technology & methodology advancements
- Inter-agency and sector collaboration
- Global Biodiversity Framework and Living Atlas partnerships
- Biodiversity Policies with strong focus on evidence-based decision making

T

THREATS

- Rapid evolution of technology outpacing standard creation (metadata and how to use the resultant data)
- Manual data flows still dominant pathway
- Limited biodiversity data types (species only)



Representatives from across UK and core data partner groups

- Establish the role & Terms of Reference
- Review of biodiversity data in the UK now and in next 5 years
- Direction needed to align the NBN Atlas with our stakeholders needs

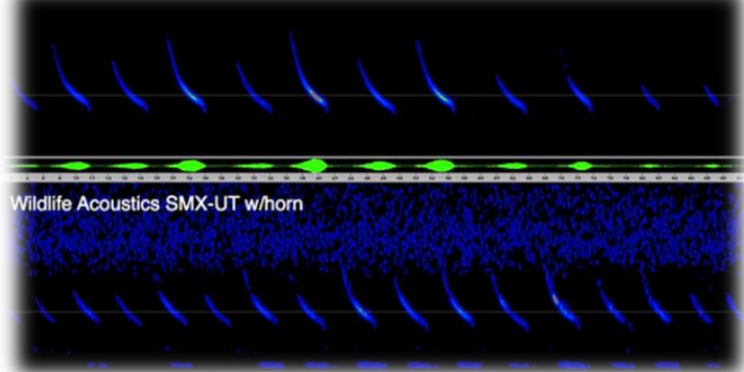
NBN Atlas Strategy

- Knowledge sharing workshops: DEFRA NCEA, UKRI NERC workshops, National Trust, Living Atlas CoP, GBIF, AWS, Conservation Evidence, NHM Data Ecosystem
- New datasets from existing partners and new partners



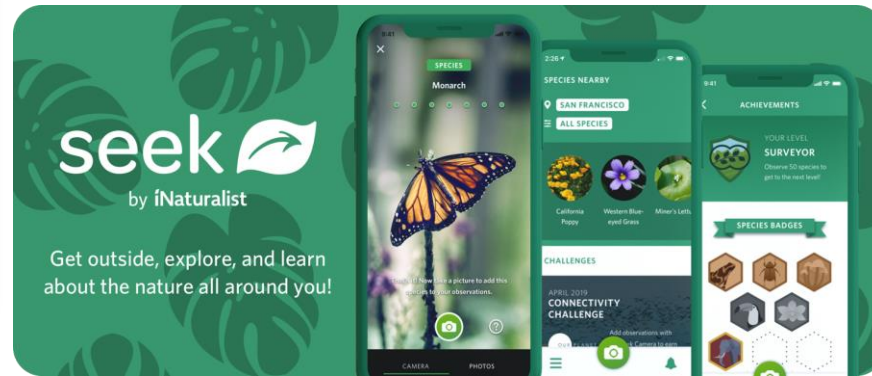
Sampling the environment not just species

Petersson D500x external mic w/horn



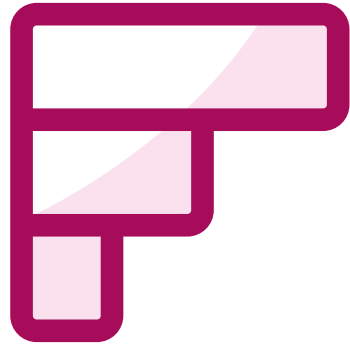
Wildlife Acoustics SMX-UT w/horn

DNA derived
AI classified occurrences
Probabilistic vs deterministic data



slido

Please download and install the Slido app on all computers you use



What data types is your organisation looking at collecting in the next 5 years?

① Start presenting to display the poll results on this slide.

slido

Please download and install the Slido app on all computers you use



What areas of the NBN Atlas would you like to know more about?

① Start presenting to display the poll results on this slide.

Mel Hardie
m.hardie@nbn.org.uk

www.nbn.org.uk
nbnatlas.org
uk.inaturalist.org

Together, we're [Making Data Work For Nature](#)
- [join us](#) today!

