



Data at your Doorstep: Insights into Local Data

Elina-Marielle Doss

Merseyside BioBank Manager

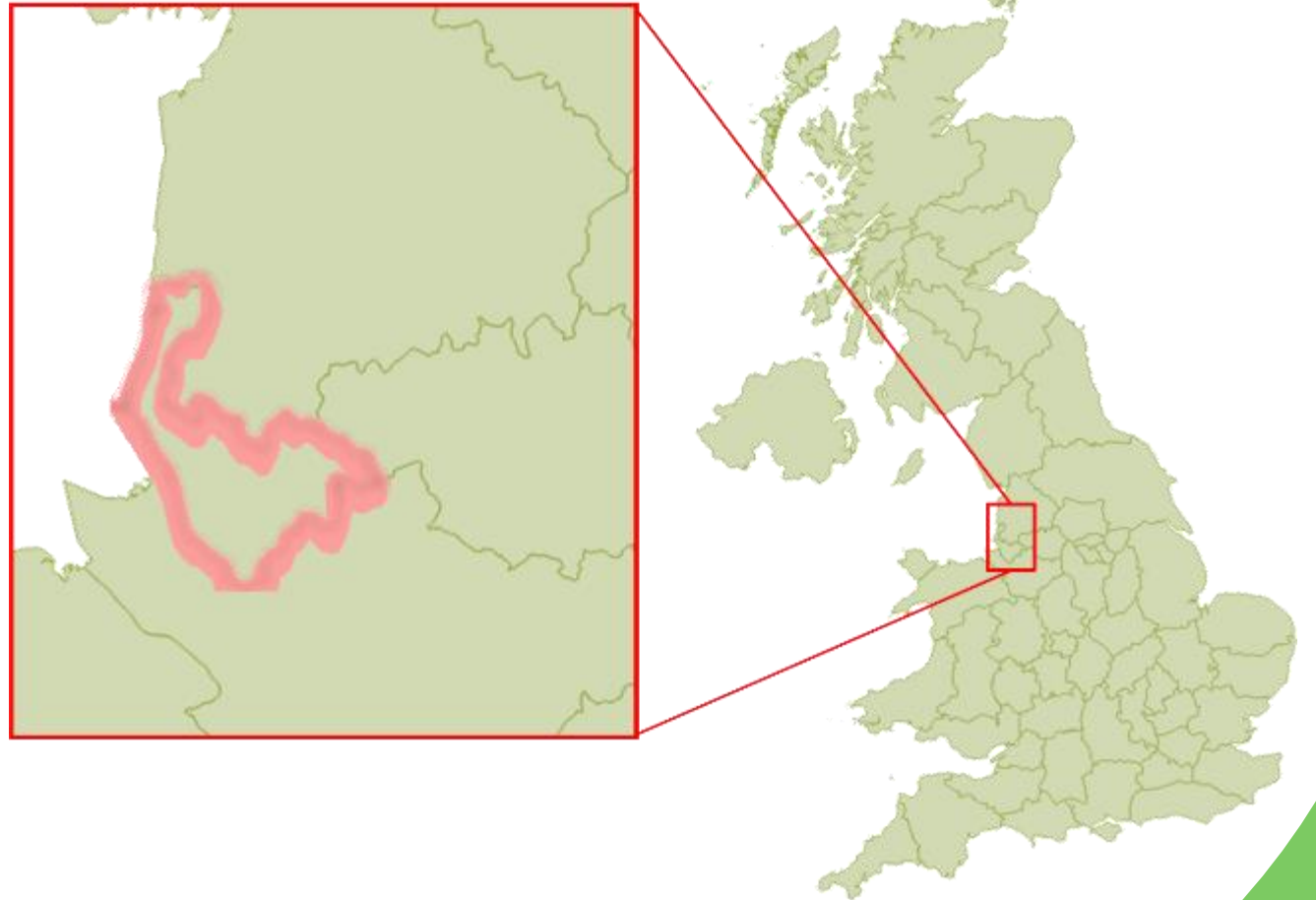
<https://merseysidebiobank.org.uk/>



What is a LERC?

Local Environmental Records Centres (LERCs) are **not-for-profit organisations** that collect, collate and manage information on the natural environment for a **defined geographic area**.

LERCs support and collaborate with a network of experts to ensure information is robust and make information products and services accessible to a range of audiences including decision-makers, the public, and researchers.





What is a LERC?

- Independent charity
- Hosted by another charity, e.g. Wildlife Trust
- Hosted by a partnership
- Community interest company / social enterprise
- Hosted by a Local Authority



GiGL



GLNP
GREATER LINCOLNSHIRE
NATURE PARTNERSHIP

Sefton Council 

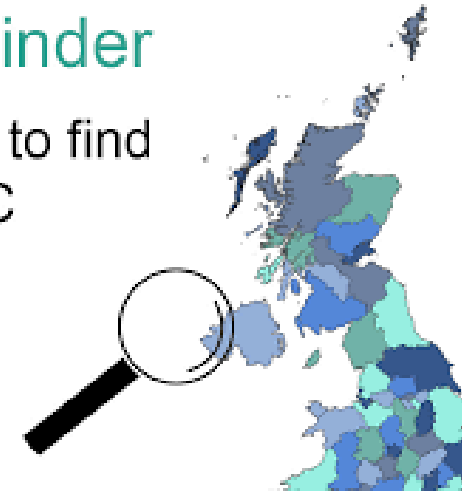
ALERC

- UK-wide representation of LERCS
ALERC National Coordinator
ALERC Directors
ALERC members
- Working Groups
- Accreditation Scheme



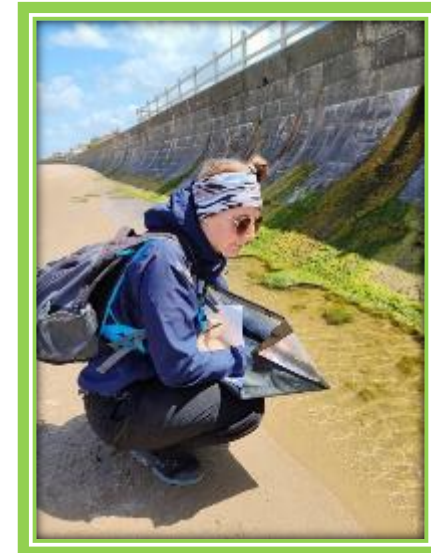
LERC Finder

Click here to find
your LERC

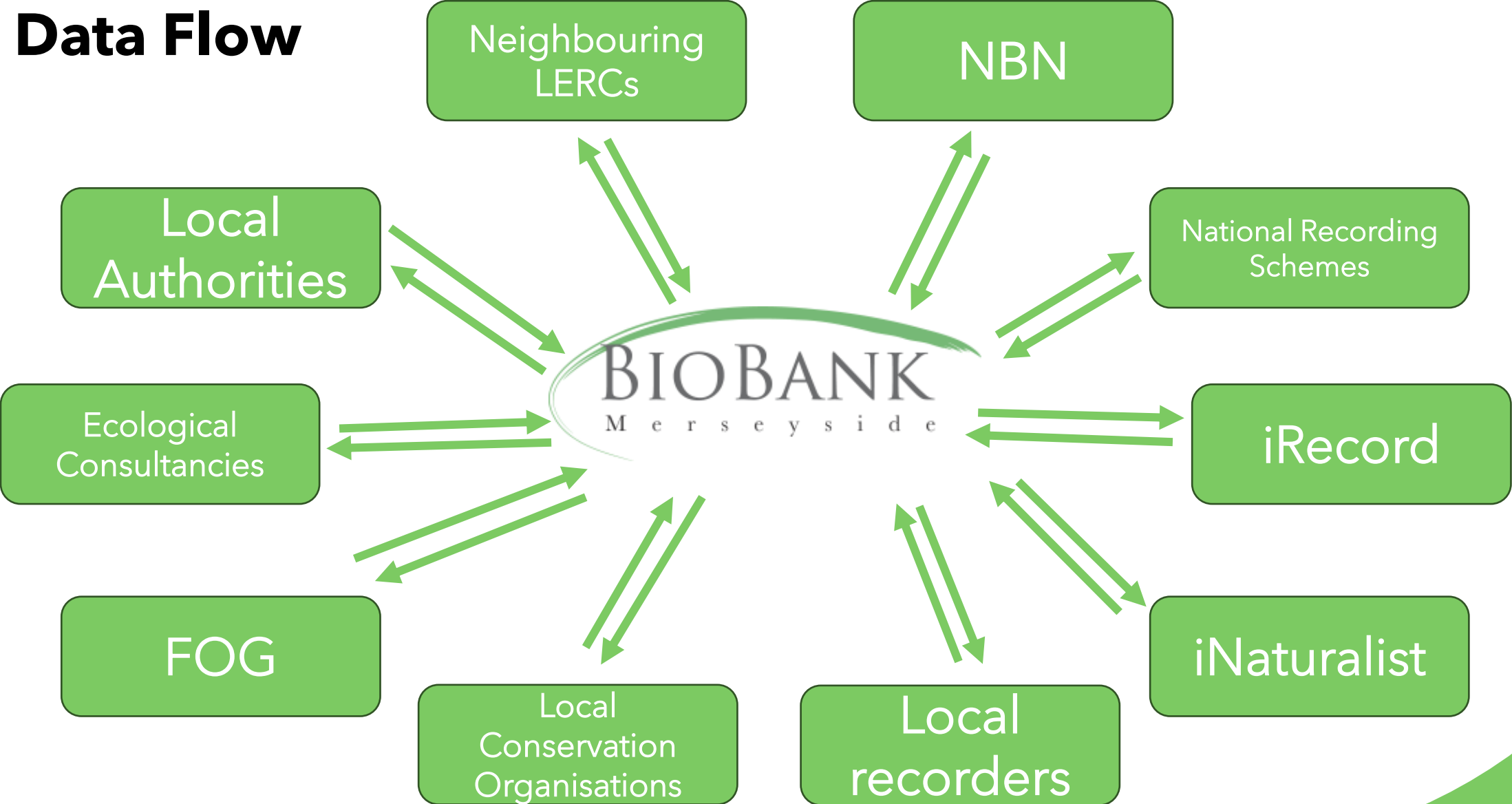


<https://www.alerc.org.uk/>

How do we collect data at MBB?



Data Flow



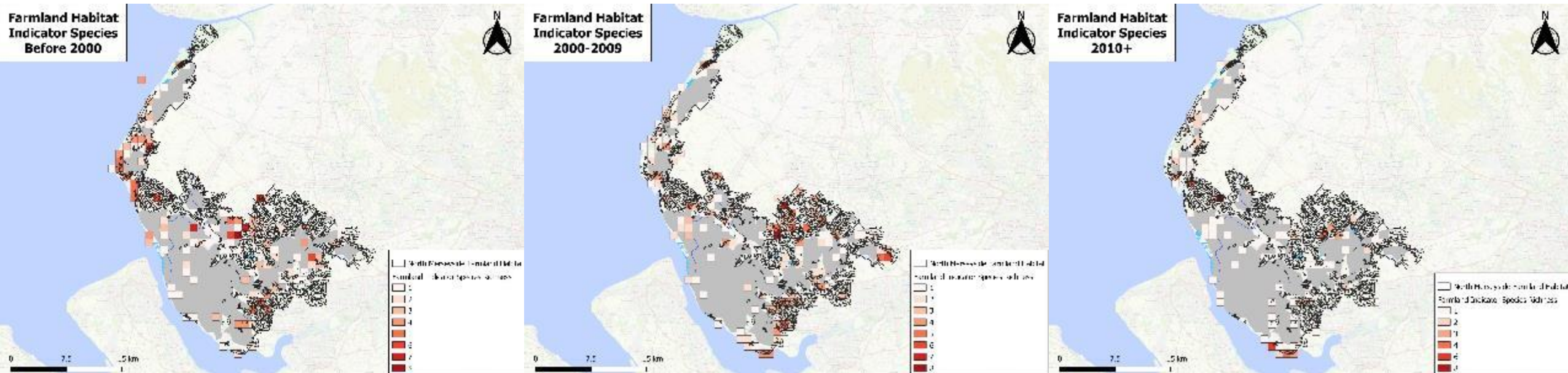


How do we collect data at MBB?

- Community and engagement / Citizen Science / Bioblitzes
- Supporting local groups
- Training
- Partnership work

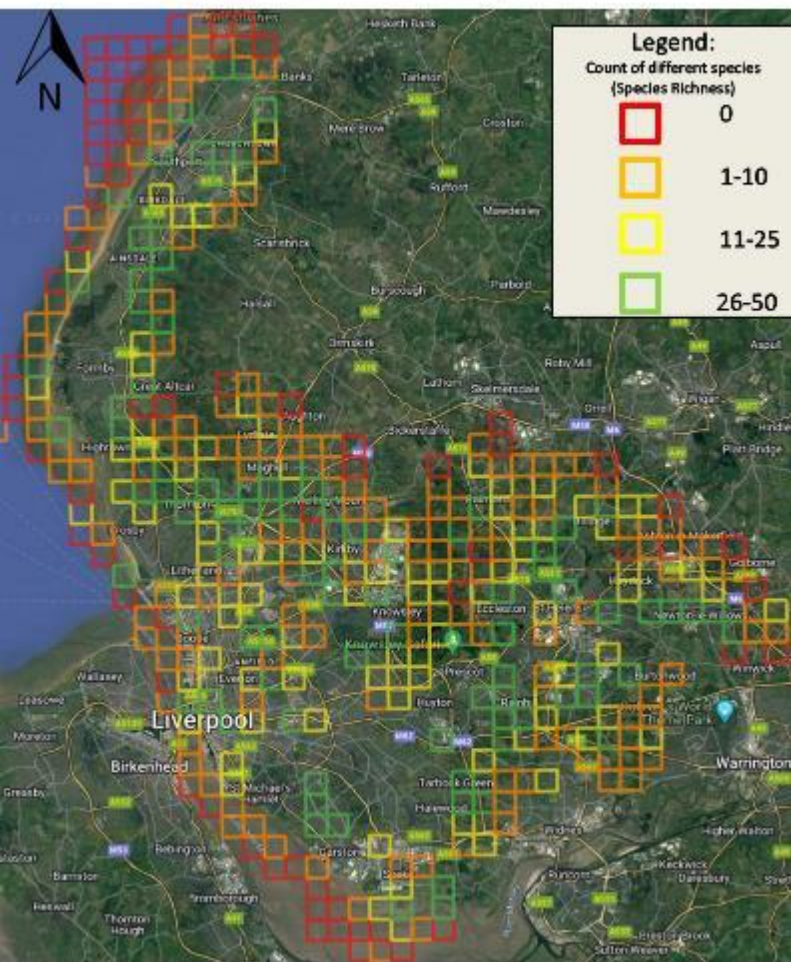


Importance of Local Data



Importance of Local Data

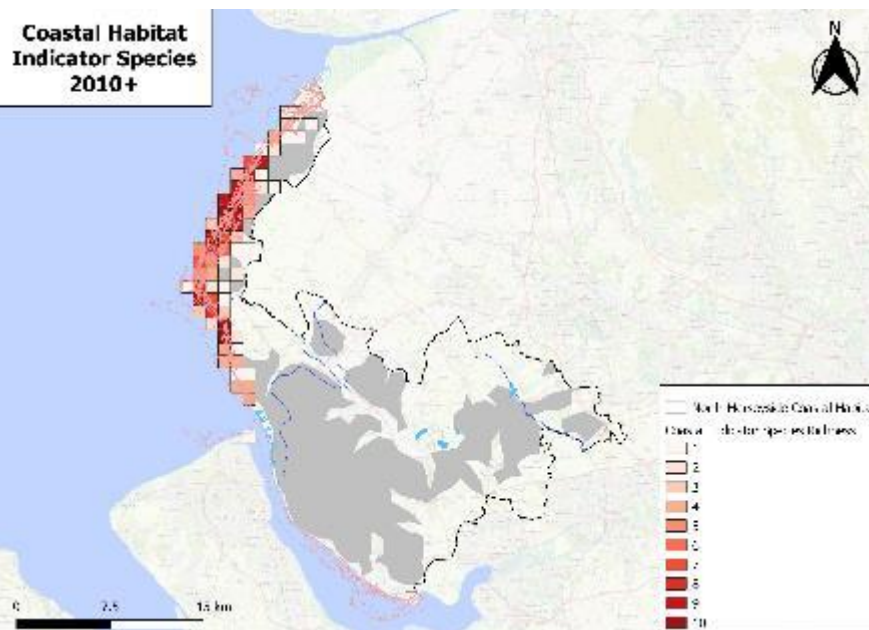
Under Recorded Grid Squares



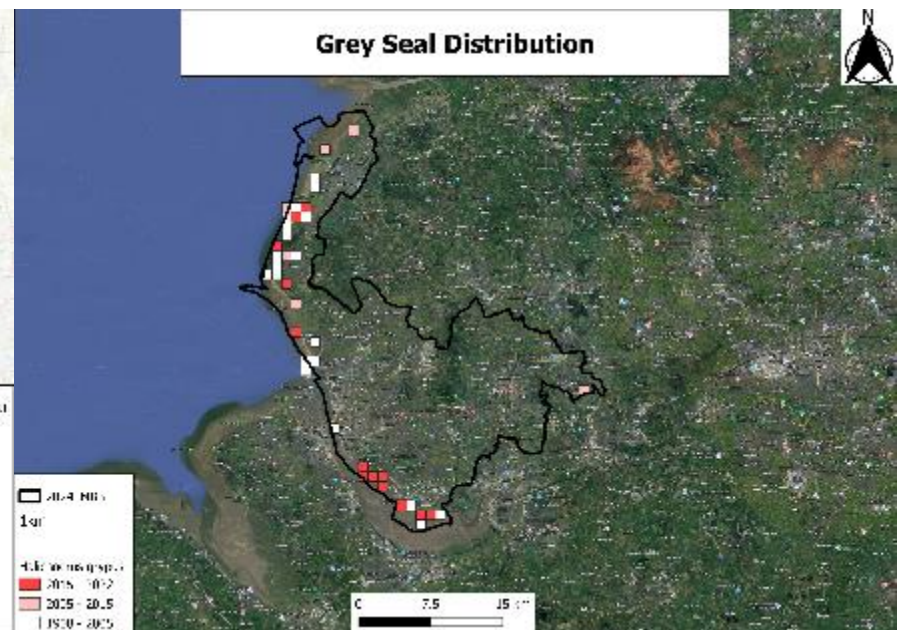
Map data ©Mapbox, ©OpenStreetMap contributors, ©Satellite Imagery

Base map ©2024 Google

Coastal Habitat Indicator Species 2010+



Grey Seal Distribution



Final Thoughts

- Data Submissions
Reminder to submit data to LERCs
- 'Free' data issue



Thank you

Elina-Marielle Doss

Merseyside BioBank Manager

elina@merseysidebiobank.org.uk

