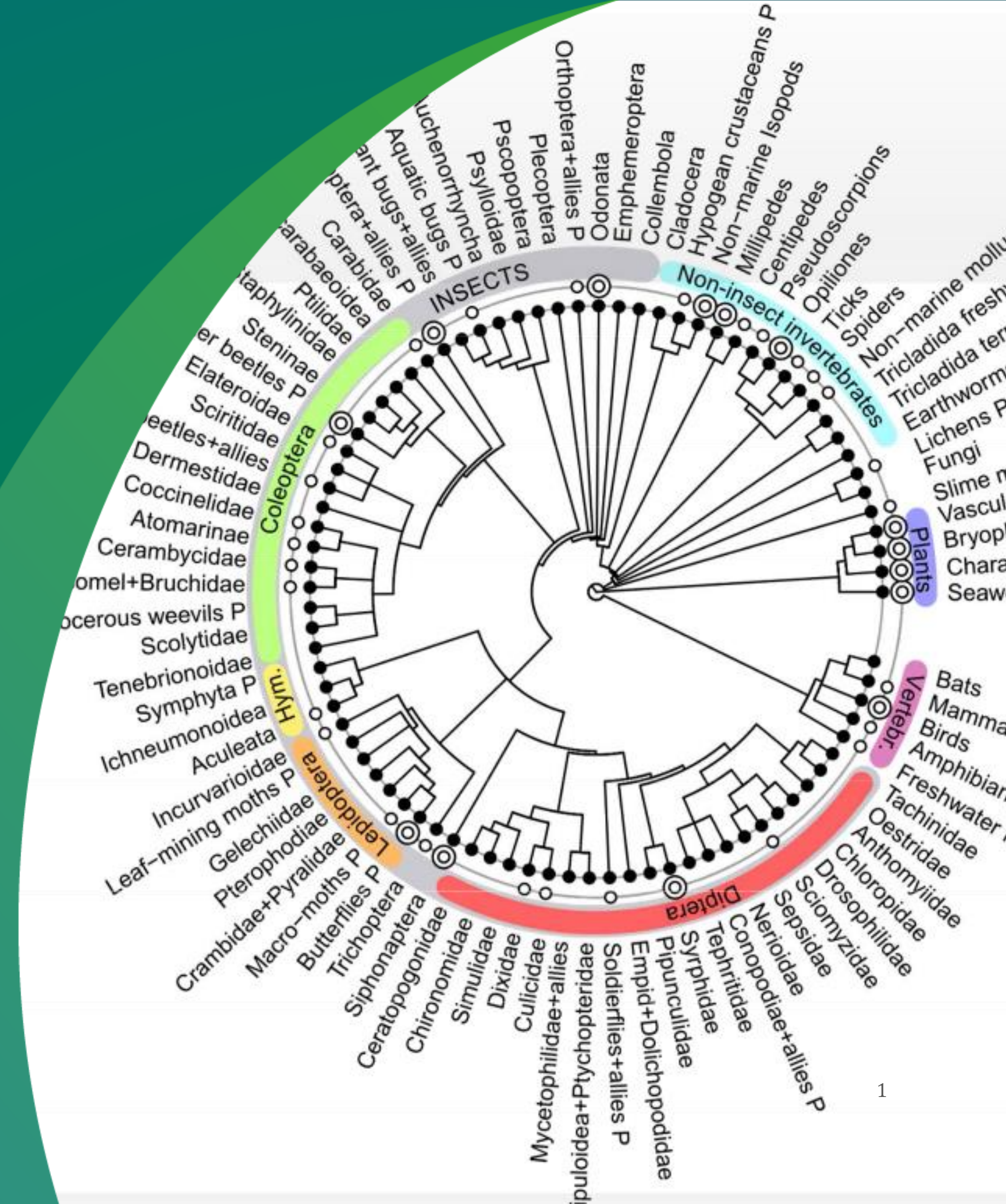


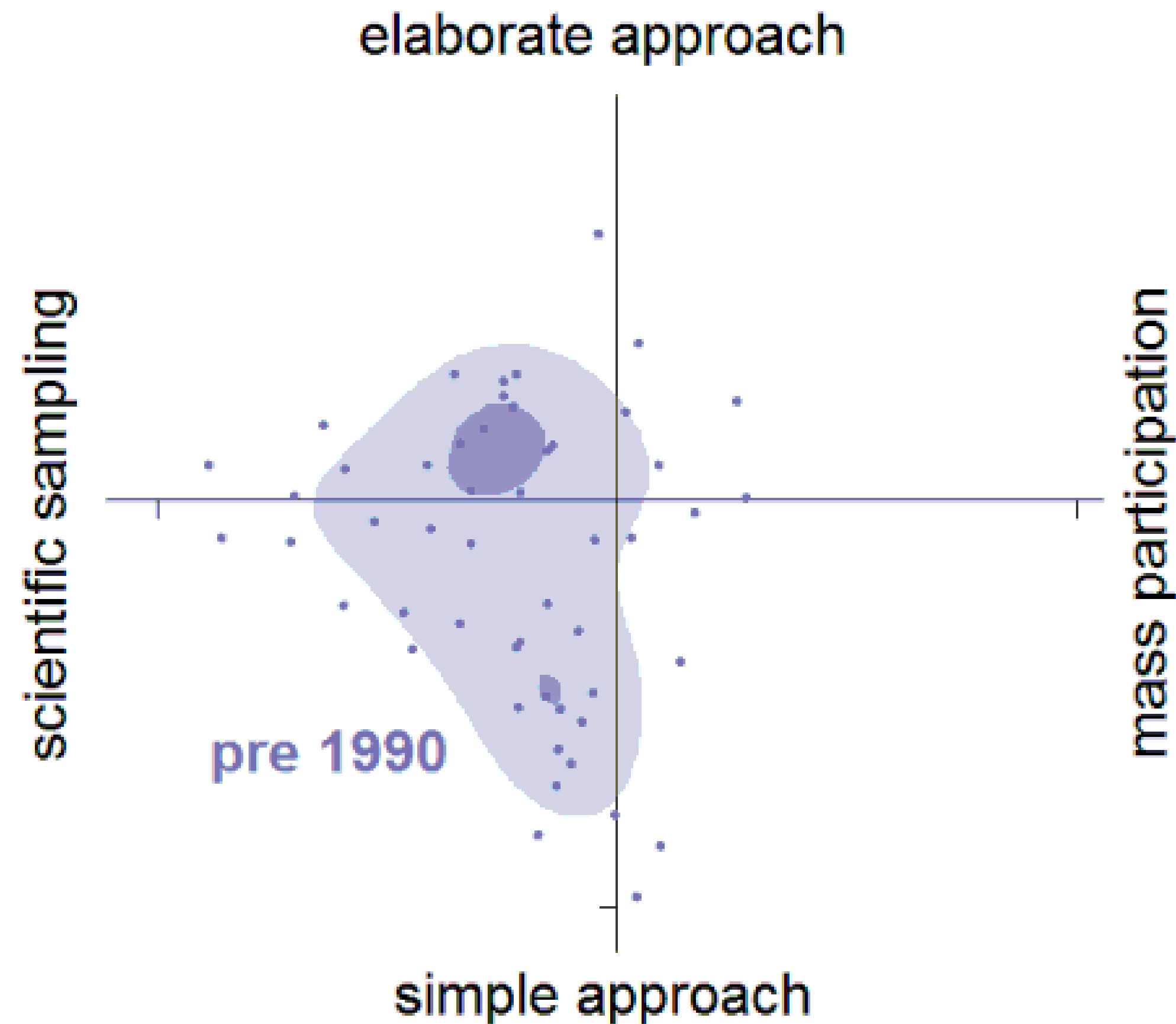
Navigating the growing diversity of systems to submit, view and share wildlife sightings

David Roy



Citizen Science continues to evolve and diversify

Citizen science in ecology & the environment



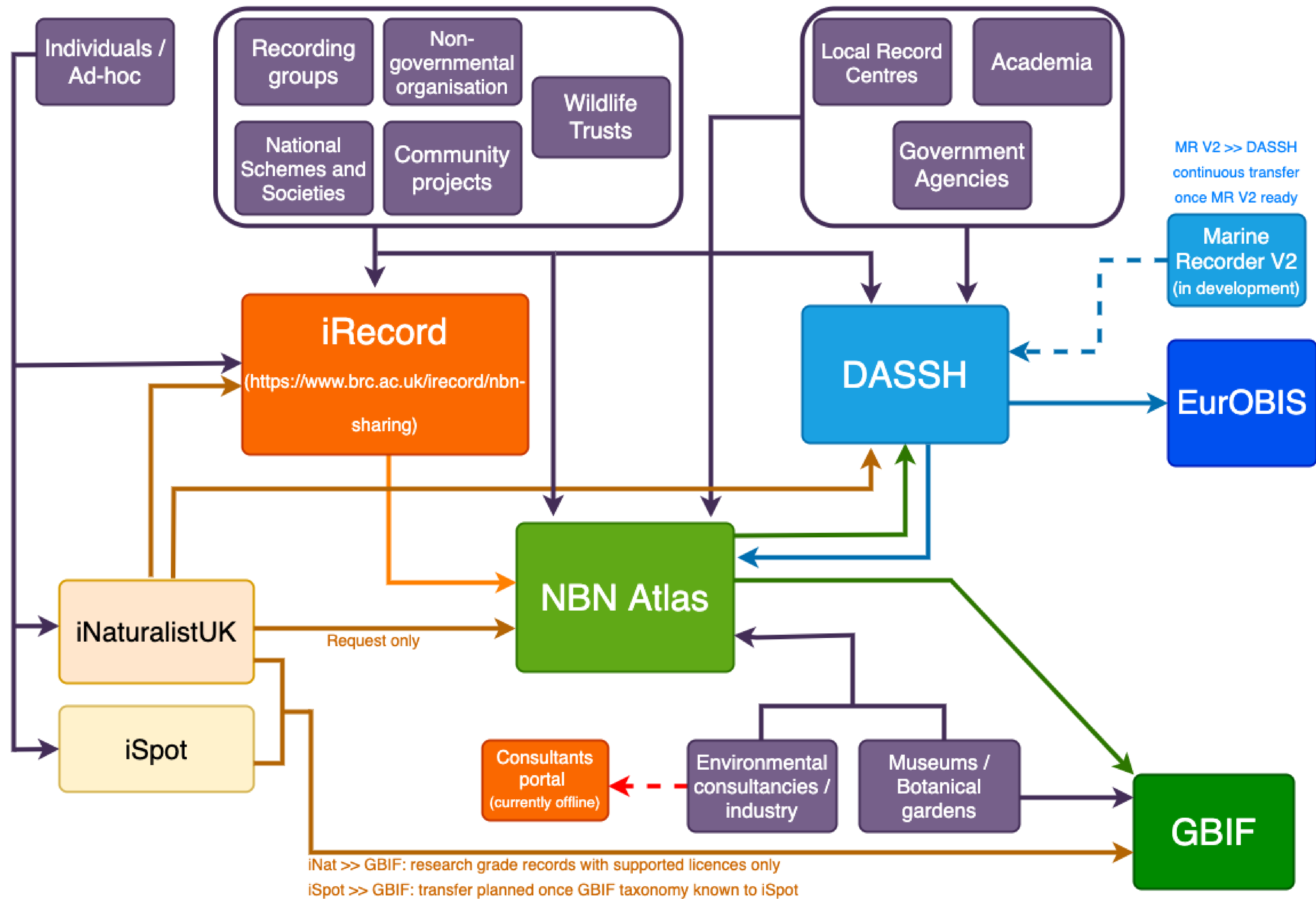
Associated with
technological
advances

Which animals did we see more of during lockdown?

Change in animal sightings compared to last year



Source: BRC at UKCEH. Data entered into iRecord. Time period is 23/3 - 11/7 in 2019 and 2020. Notes: iRecord has a small proportion of records from outside the UK. Showing only groups with at least 1,000 records in 2020. Dates are date of submission to iRecord.



Two key considerations for recorders?

What support do you need?

- **For identification**
- **Community engagement**

How do you want your data to be used?

- **Local decision-making**
- **National reporting and influence**
- **Global research use**

Community online platforms with crowd-sourced identification



<https://nbn.org.uk/inaturalistuk/>

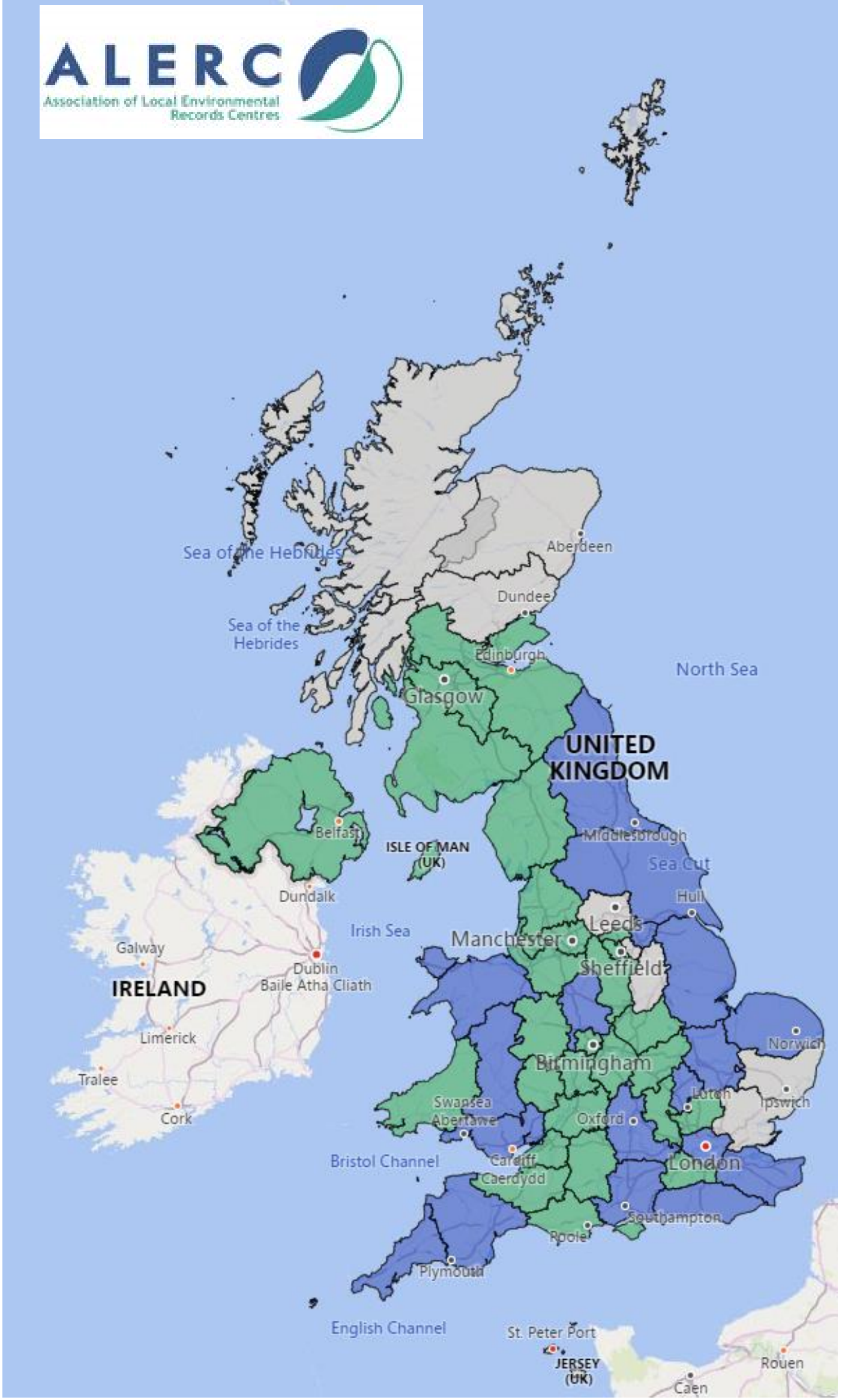
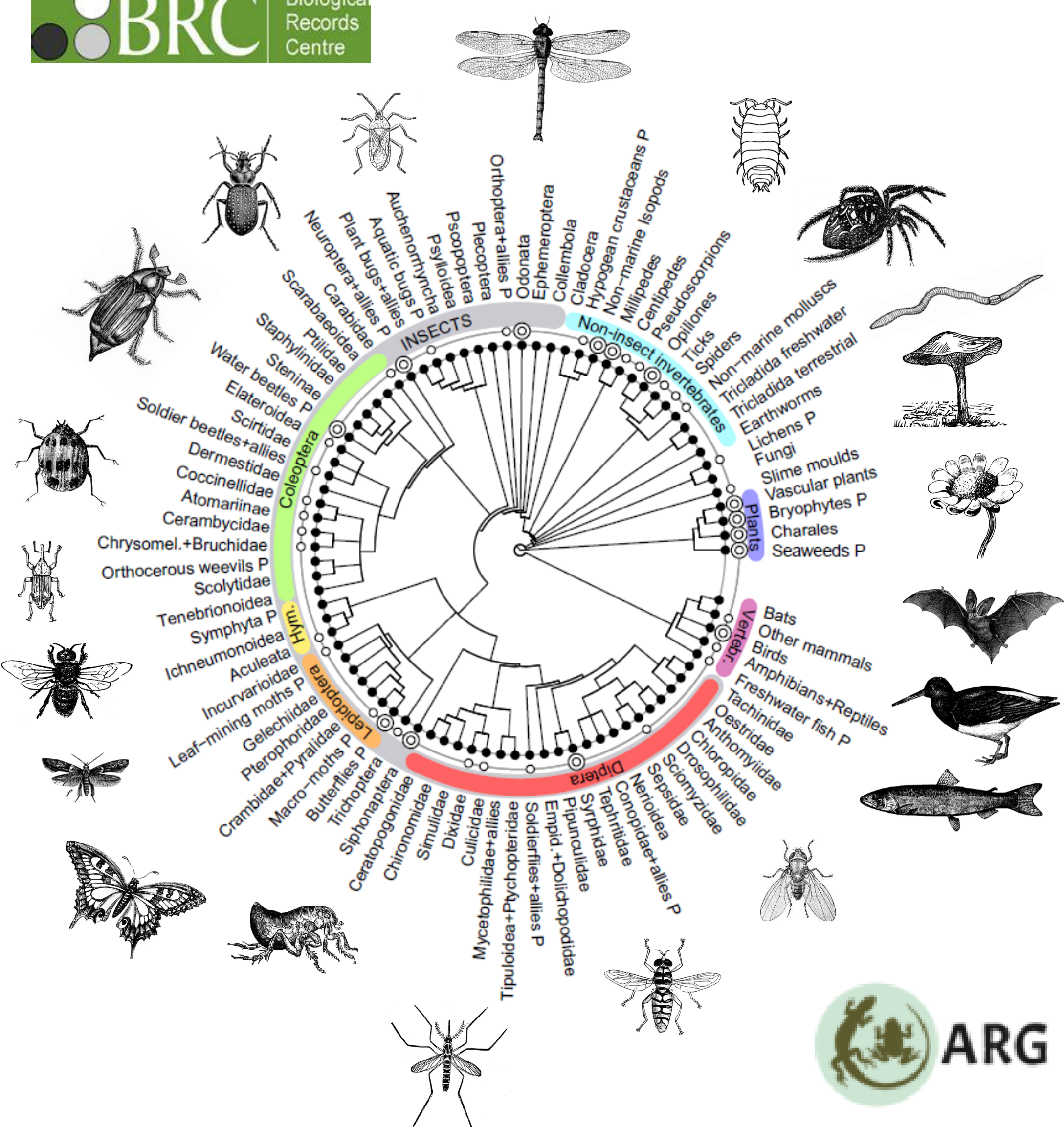
Image classification to suggest IDs

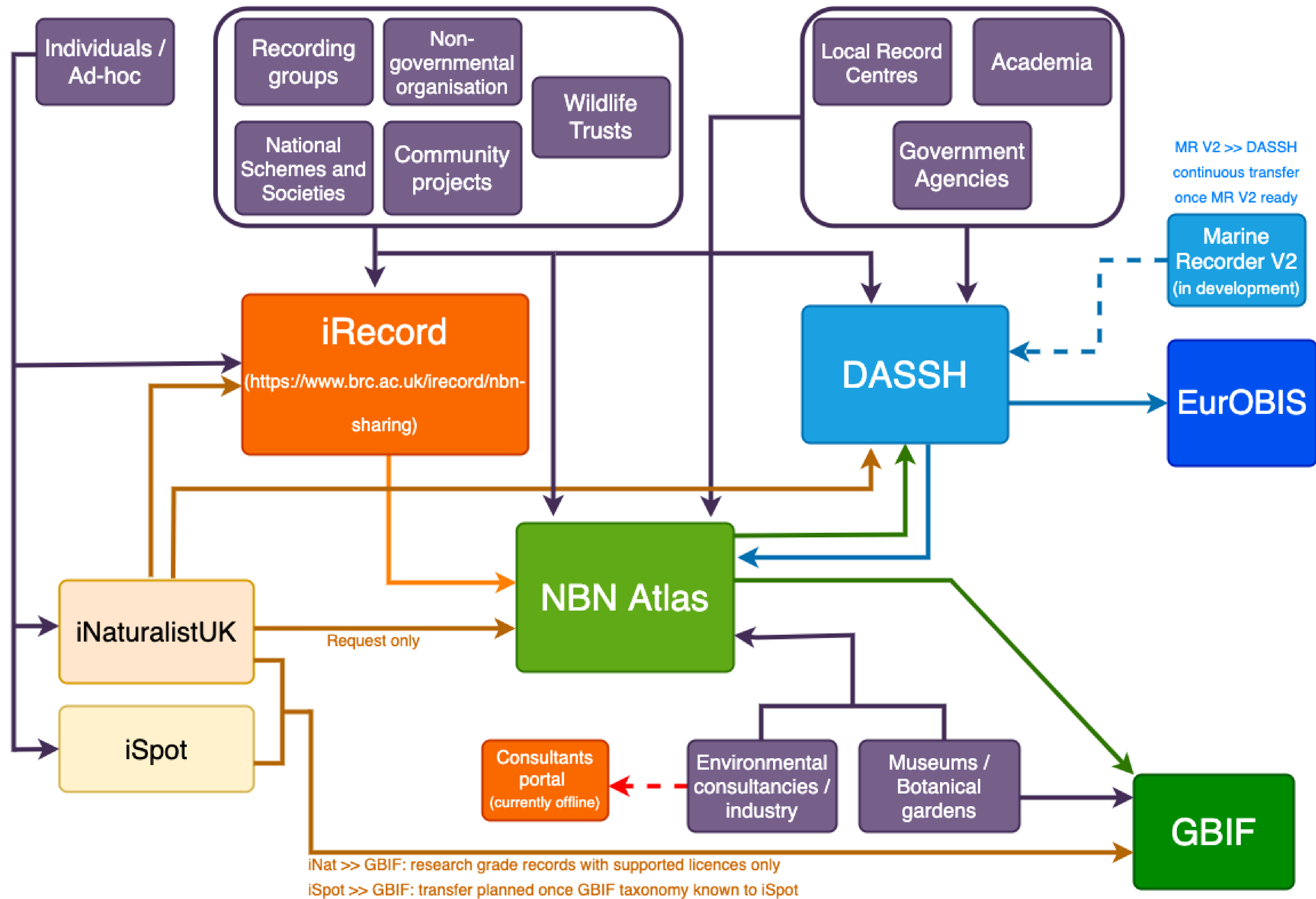
Crowd-sourced identification support




Learning and development opportunities

Community support through national schemes and LERCs







United Kingdom
Butterfly Monitoring Scheme



UKBMS

Home

Reporting

Mapping

Forum

Login

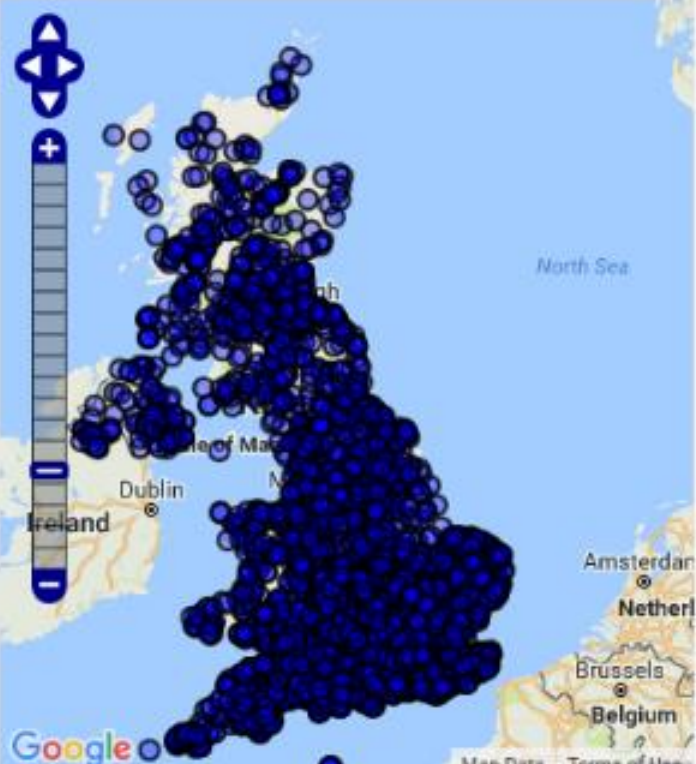
Register

Home

Welcome to the UKBMS Transect Walker online.

This online system will become the primary route for submitting UKBMS data, although we will continue to support data submission via existing routes (e.g. via Transect Walker). The system can help to speed up data capture each year, as recorders will be entering their data directly onto a central database, and they will also be able to submit data on a weekly basis. The site enables progress with recording to be tracked through the season. Data can also be reviewed by transect co-ordinators.

The map on the right summarises recent recording activity (red symbols for sites recorded this year, blue symbols indicate sites recorded in previous years) and the website includes more detailed reports of recent activity. Please note that this website does not currently include historic UKBMS data.






LERC Wales App

Record any species on the go in Wales.

Download on the App Store

GET IT ON Google play





Butterfly Conservation

Saving butterflies, moths and our environment

Butterflies for the New Millennium Online

Home

Enter records

Explore my records

Explore all records

Download my records

My account

Log out

Where was it?

Step 1: Select the Country or region.


Country or region:
<select area>

Step 2: Please provide the map reference of the record. You can enter the reference directly, or search for a place then click on the map to set it.

Enter a grid reference and click the location on the map:
British National Grid

Or, search for place name or postcode then click on the record location on the map:
Search

Step 3: Please provide the name of the site below:



National
Plant Monitoring
Scheme





Home

Lookup lists

Custom attributes

Taxonomy

Observations data

Home

Welcome to the Indicia Warehouse!

Indicia is a toolkit that simplifies the construction of new websites which allow data entry, map & Hydrology.

Indicia project website

Indicia on GitHub



Bees, Wasps & Ants
Recording Society

Home

Latest content

Forum

Register

Bees, Wasps & Ants

About BWARS

ID Help & Recording

Projects & Research

Resources

Submit a sighting of *Bombus hypnorum* (tree bee)

Reporting your sightings of *Bombus hypnorum*

BWARS is continuing its long-term mapping project in 2014, in which we are plotting and monitoring the spread of *Bombus hypnorum* in Britain. If you have any records of this spectacular, and distinctively marked bumblebee, please submit the full details via this online recording platform. There is a facility for uploading photographs to support records if you have them. Please use the boxes below to provide information on numbers, sexes, flower visitation, behaviour and nest sites, and include any additional information in the "Comment" section.



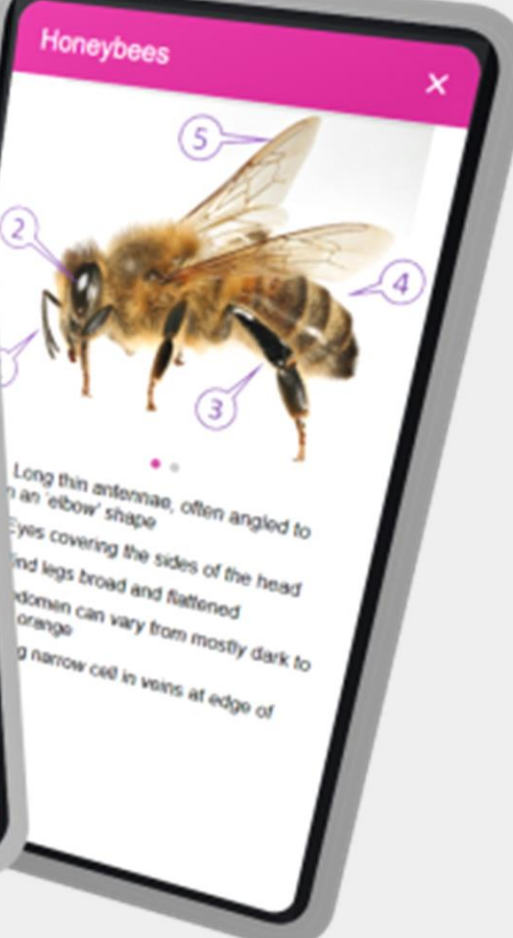



Photo: Nick Owens

You are about to submit a sighting of a tree bee, *Bombus hypnorum*. First, tell us who identified it and provide photos of the record if you have any. This information will help us confirm the record.



FITCount





NATIONAL MUSEUMS NI

CEDaR Online Recording

Centre for Environmental Data and Recording

Home

Submit Sightings

CEDaR Online Recording


For further details about how records submitted to this website are verified, managed, displayed, shared and used please read on...

More information

Register now or Login

Submit Single Record

Submit List of Records







Verification (new version)

We welcome feedback on this new version of the iRecord verification system, that is under development. It does not yet include all the functionality of the current verification system (available via <https://www.brc.ac.uk/irecord/verification>), but is ready for active use and it does provide most of the core functionality. Its main benefit is considerable improvement in performance. Please email irecord@ceh.ac.uk with any feedback on its use. See further information in [this forum post](#).



Search:

Context: Bee-fly Watch; Harvey, Martin C.

Status:

Pending

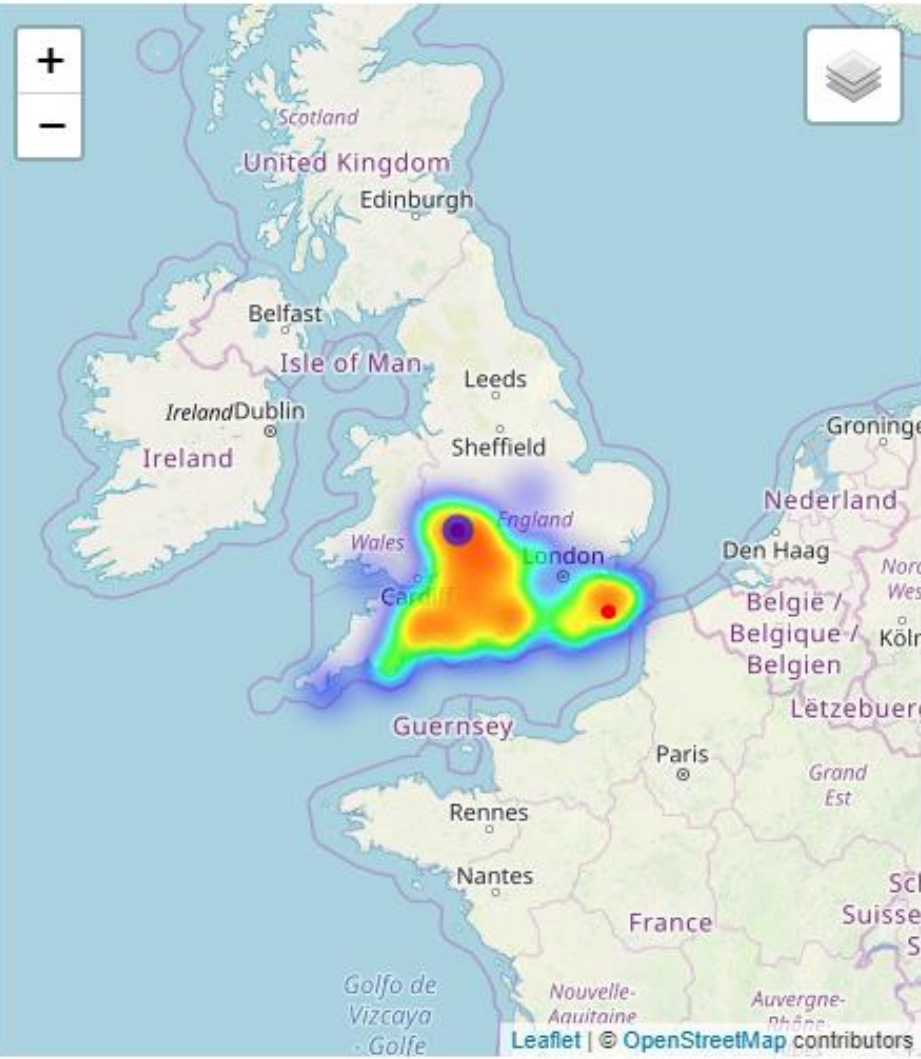
Photos: -no filter-

ID	Source	Recorded by	Accepted name	Map ref.	Date	Media
			Bombylius			
9850493 23 42		Comont, Richard	Bombylius	SO77284432	2019-04-22	
9848795 23 257		Michael Howard		TQ97623126	2019-04-23	 

Showing 1 to 2 of 2

Previous

Next



BRC

Biological Records Centre

Home

Recording

Hosted scheme webpages

Publications

Resources

Research

Staff

Links

Contact

HOME

Recording Schemes

Recording Schemes and Study Groups

There are variety of national species recording schemes and study groups in the UK. Clicking on one of the taxonomic group names below will open a smaller window with contact details for that scheme.

BOTANY			
Vascular Plants			
<div>• Botanical Society of the British Isles</div>			
Lichens	Myxomycetes	Marine Algae	Algae
<div>• Lichens</div>	<div>• Myxomycetes</div>	<div>• Marine Algae</div>	<div>• Characeae (stoneworts)</div>
Bryophyta		Fungi	
<div>• Mosses and liverworts</div>		<div>• British Mycological Society</div> <div>• Association of British Fungus Groups</div>	
VERTEBRATE ZOOLOGY			
Birds		Mammals	
<div>• Birds</div>		<div>• Mammal Society</div> <div>• Bat Conservation Trust National Bat Monitoring Programme</div>	
Fishes	Amphibians and Reptiles		

Formed in 2009, ALERC is an association between Local Environmental Records Centres (LERCs) in Great Britain. The Association aims to provide a central voice for the views and concerns of the Records Centre community, whilst building a support-based network of knowledge and advice to meet the needs of its members.

What is an LERC?

Local Environmental Records Centres (LERCs) are not-for-profit organisations that collect, collate and manage information on the natural environment for a defined geographic area. LERCs support and collaborate with a network of experts to ensure information is robust, and make information products and services accessible to a range of audiences including decision-makers, the public, and researchers.

Association Objectives

- To promote and encourage the completion of a UK-wide network of Local Environmental Records Centres.
- To promote and develop good standards of practice in the collation, management, dissemination and analysis of biological and geological records.
- To promote Local Environmental Records Centres regionally, nationally and at a UK level to potential users and suppliers of data.
- To provide full representation of the UK with country specific solutions and equal emphasis on the individual countries' requirements.
- To develop and promote accreditation schemes for biodiversity and geodiversity records centres and their staff.
- To encourage and facilitate networking between Centres to enable exchange of ideas, collaborative working, developing joint tools and sharing good practice.

Click [here](#) to find your LERC



Individuals /
Ad-hoc

Recording
groups

Non-
governmental
organisation

Wildlife
Trusts

Local Record
Centres

Academia

Diversity of systems is inevitable

Key priorities should therefore be to:

- Adopt common standards (e.g. UKSI)
- Help connect systems together
- Automate data checking (rules, visualisation)
- Prioritised support for verification
- Support local, national, international data flow

iSpot

Consultants
portal
(currently offline)

Environmental
consultancies /
industry

Museums /
Botanical
gardens

GBIF

iNat >> GBIF: research grade records with supported licences only

iSpot >> GBIF: transfer planned once GBIF taxonomy known to iSpot

Thanks to volunteer recorders & co-ordinating organisations

For presentation material:

Martin Harvey, Michael Pocock