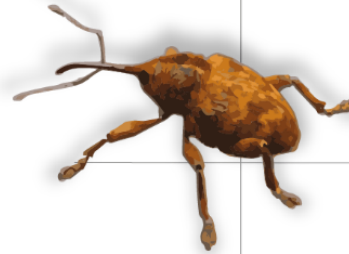


A strategic perspective on

Recorder 6



Clare Blencowe

Chair of the Recorder 6 Steering Group

& Manager of Sussex Biodiversity Record Centre

Trusted biological data management software

Recorder 6 is a powerful and sophisticated tool for entering, collating, managing and exchanging records of species and habitats

Built to NBN standards

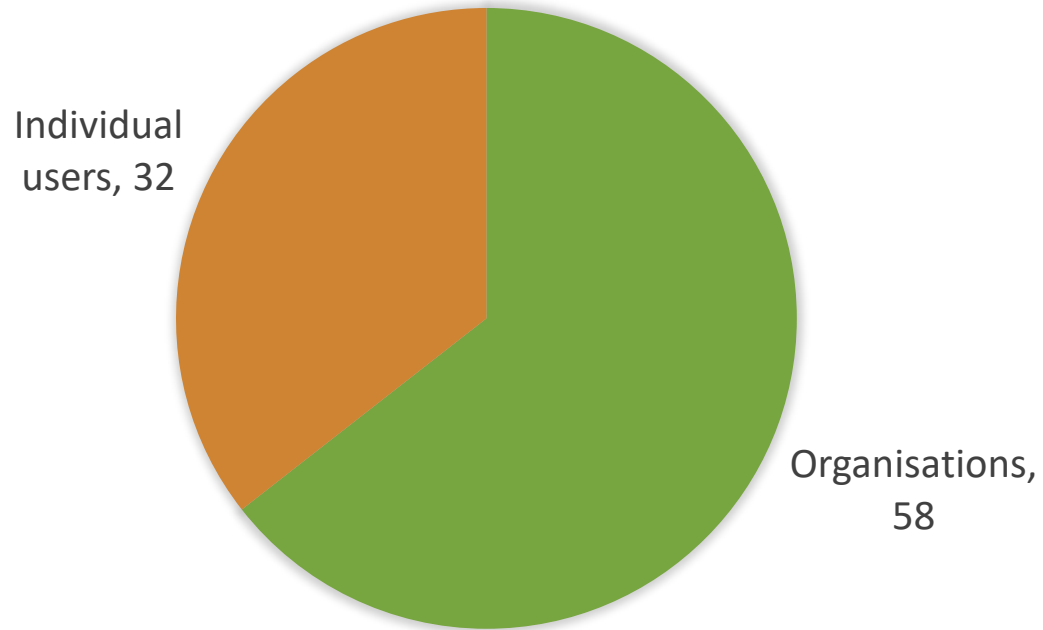
Fully integrated with the UK Species Inventory

 Recorder6.info

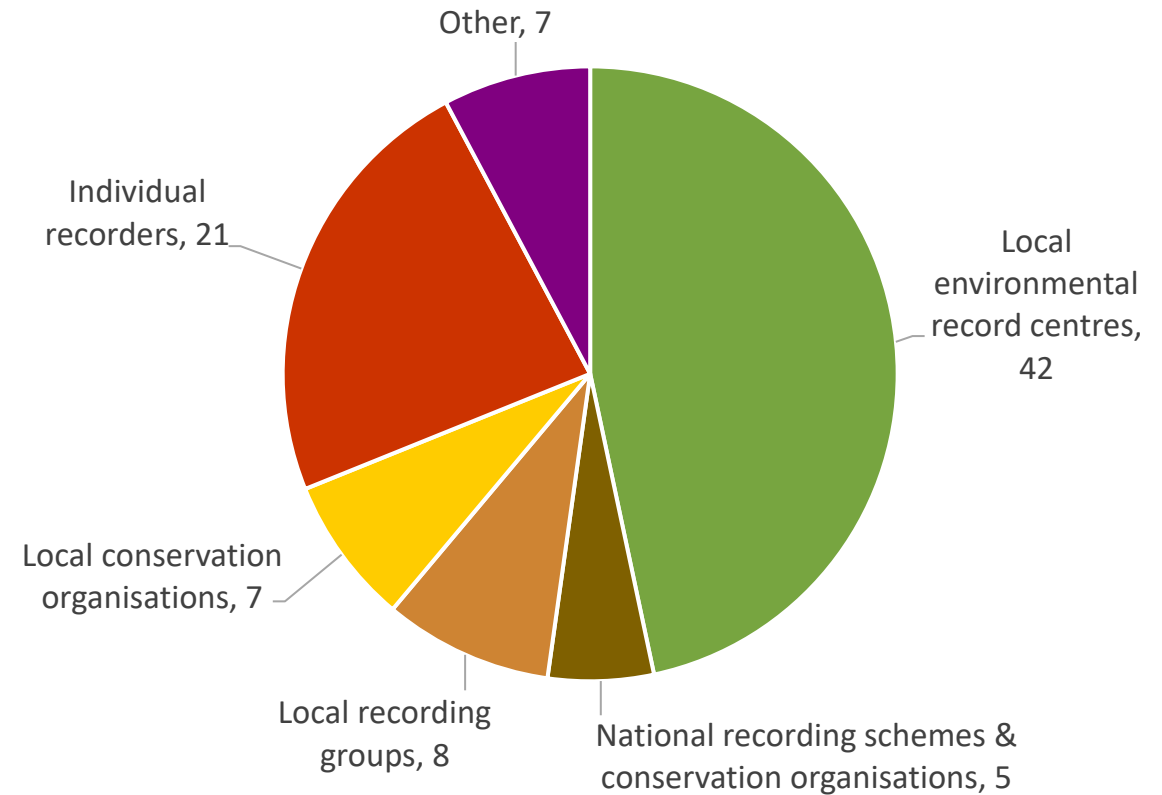


Community

Recorder6 licence fee payer types



Recorder6 user types





Support

Regular dictionary updates available, when you pay the annual licence fee.

We need you - the user community - to support each other.

 forums.nbn.org.uk

Recorder				
Forums		Topics	Posts	Last post
	Recorder Announcements Important announcements regarding Recorder. If you see something in here, please do read it first. Moderated by AndyFoy, MikeWeideli, NBN Support, sallyrankin	170	1,233	03-11-2021 13:02:25 by charliebarnes
	How Do I... & Other Questions This is the place to ask how to perform specific tasks in Recorder, or any other burning questions you might have. Moderated by AndyFoy, MikeWeideli, NBN Support, sallyrankin	766	3,489	28-07-2021 19:37:32 by MikeWeideli

Development

‘Recorder’ web prototype under development.

Subscribe to the Recorder6 newsletter for more information



nbn.org.uk/tools-and-resources/recorder6/recorder-6-newsletters/

Recorder 2021 Home Data entry ▾ Help ▾ John van Breda ▾

Home

Recorder web prototype

You are running an experimental prototype demonstrating a small portion of Recorder 6's functionality rebuilt to run in a web-browser, using the Python language and Django framework.

This prototype is limited to the following areas of functionality:

- Login screen
- Data entry -> Locations allows you to browse a simple hierarchy of top-level locations. Click the small arrow to the left of a location name to expand and view the children.
- Locations can be selected to preview, including the map panning to the correct point.
- Edit button for locations takes you to an Edit screen, allowing basic location information to be edited. This includes a "nested formset" table for location names, which illustrates how Django can be used to develop complex nested forms including concepts like measurements, site features and sources.
- [Admin user interface](#) which allows browsing and editing of the "raw" data for admin and full edit level users. Currently limited to the Location table and related tables implemented in the main user interface, plus the User table.
- [REST API for the Locations data](#) which illustrates how data can be easily exposed to other applications.

Funding

Amount held as at end of March 2021

£21,089

Licence fee system is bringing in about £8,000 to £10,000 per year.

Support from users for this system is invaluable! Buy your licence at

 nbn.org.uk/tools-and-resources/recorder6/

Acknowledgements

The Recorder 6 Consortium: Mike Weideli, Sally Rankin, John van Breda
– keeping the Recorder6 show on the road!

The Recorder 6 Steering Group – volunteering their time to represent
the broad spectrum of users' interests

The NBN Trust – providing vital 'in kind' support with administration
and handling finances



Recorder6 users