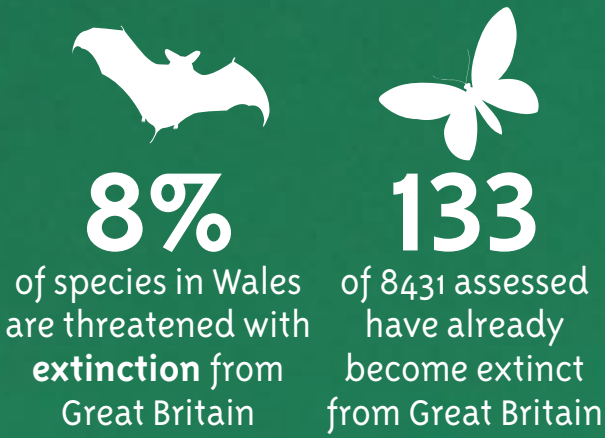
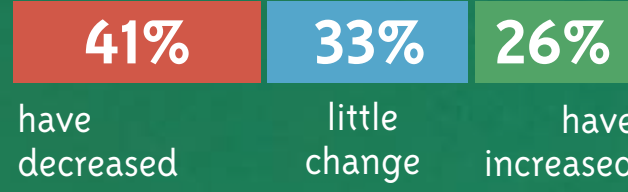


BIODIVERSITY IN WALES IS DECLINING. SINCE 1970 THERE IS LESS WILDLIFE AND IN FEWER PLACES.



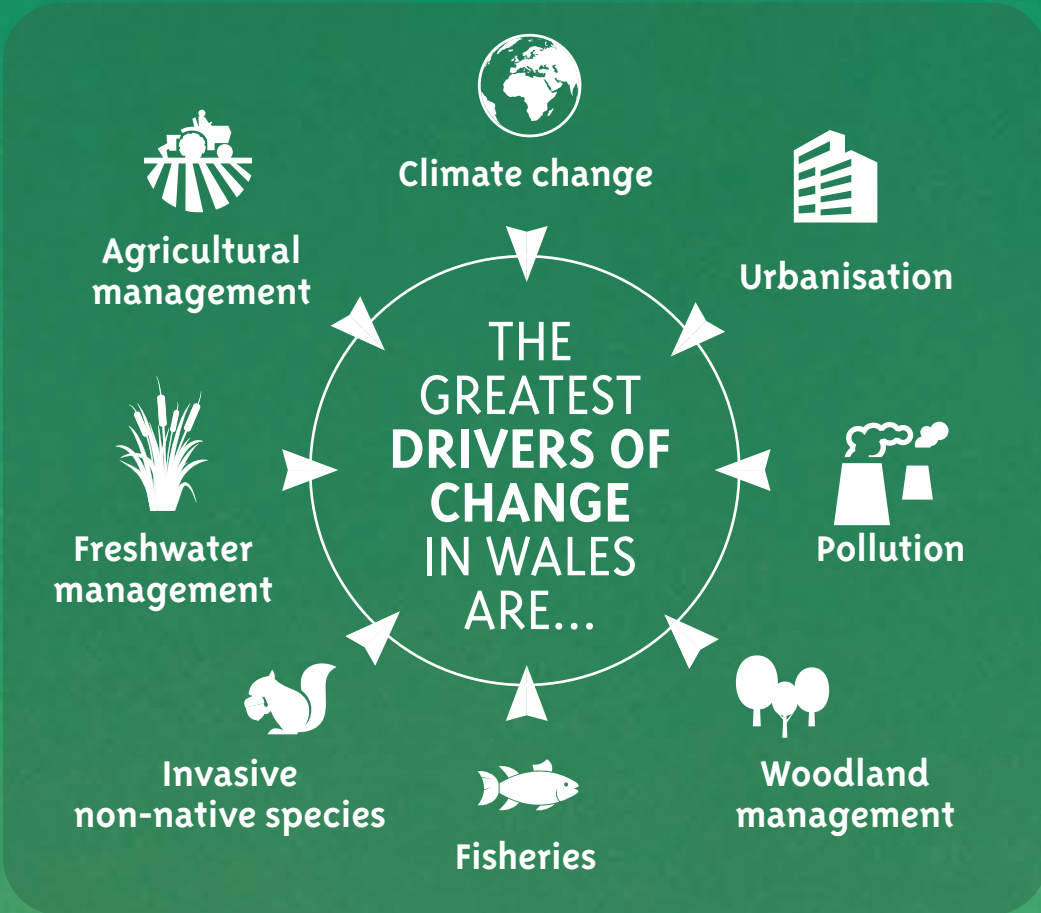
SINCE 1970 IN THE UK...

More species in the UK have seen their **populations decrease** than increase:

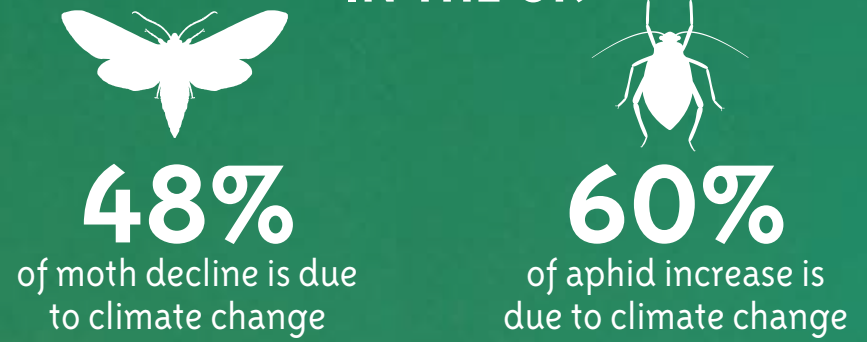


IN WALES...

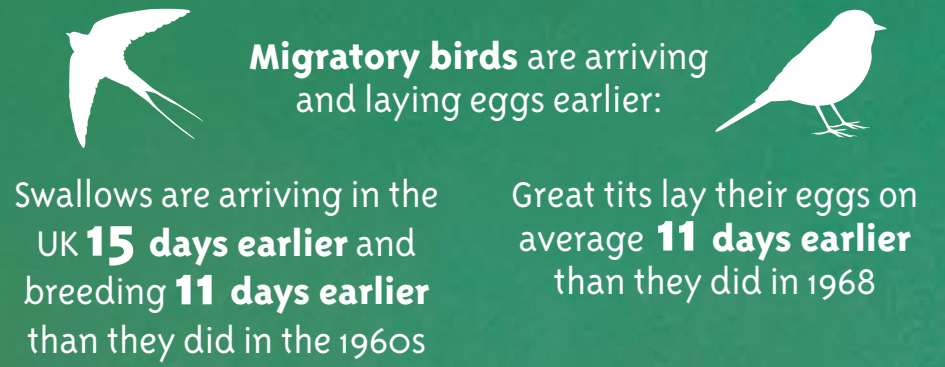
We have seen big changes in where wildlife is found:



CLIMATE CHANGE IS HAVING AN INCREASING IMPACT ON NATURE IN THE UK



The kittiwake population of Wales has declined by **35%** since 1986. Across the UK climate change has reduced the availability of sandeels, a key food source



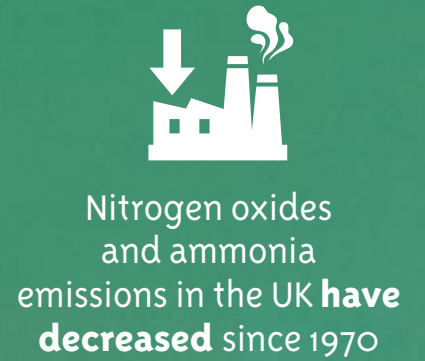
CHANGING AGRICULTURAL MANAGEMENT HAS HAD THE BIGGEST SINGLE IMPACT UPON NATURE IN THE UK OVER RECENT DECADES



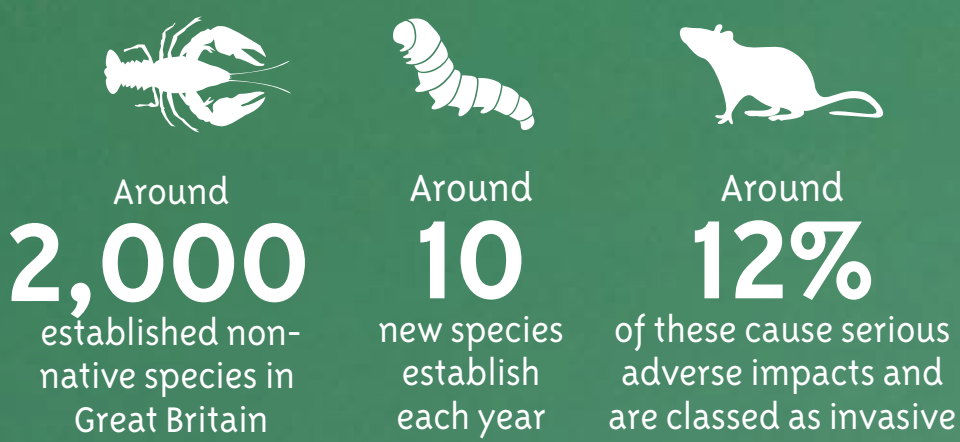
URBANISATION



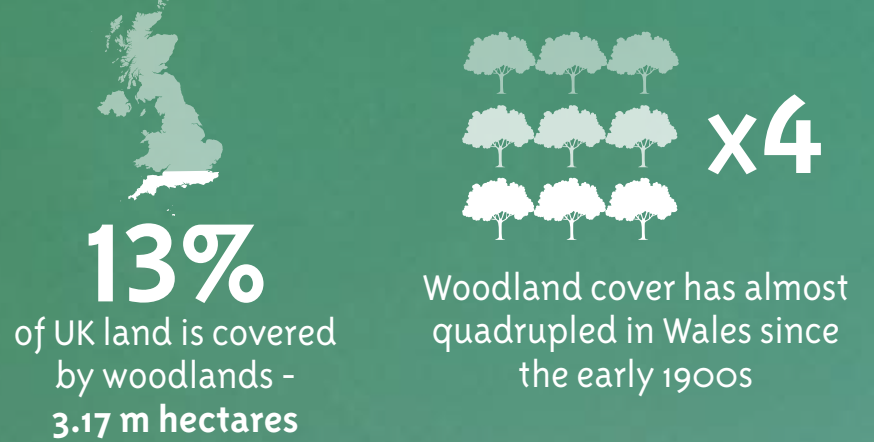
POLLUTION



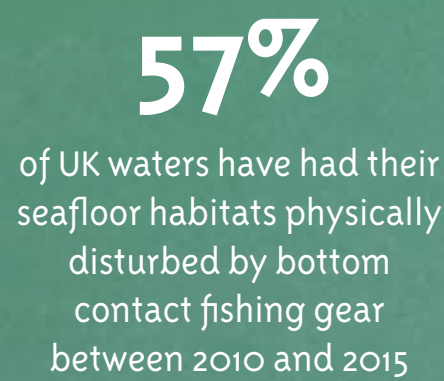
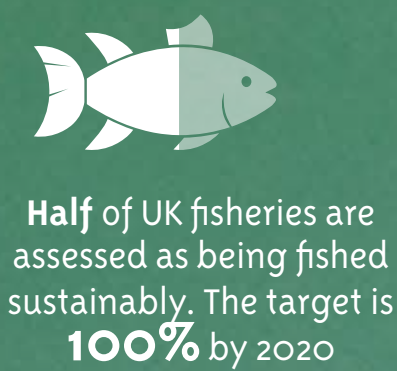
INVASIVE NON-NATIVE SPECIES



WOODLAND MANAGEMENT



FISHERIES



PUBLIC SUPPORT FOR CONSERVATION IN THE UK CONTINUES TO GROW



However, public sector expenditure on biodiversity in the UK, as a proportion of GDP, has **fallen by 42%** since a peak in 2008/9