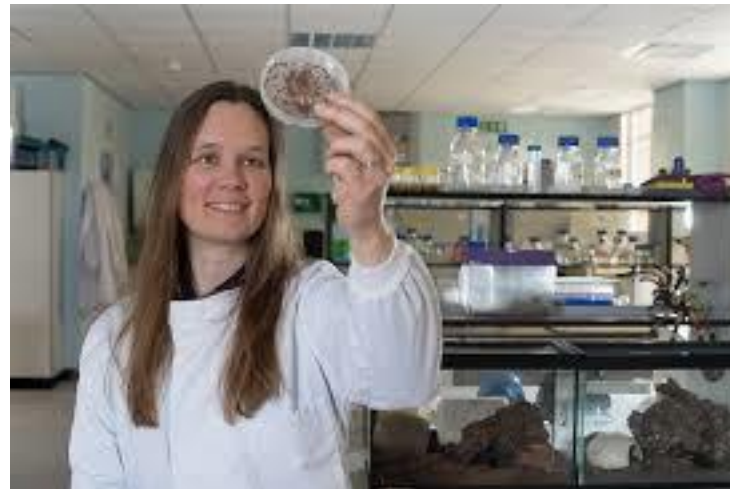


Spider Science: from academic research to public engagement

ArachNotts

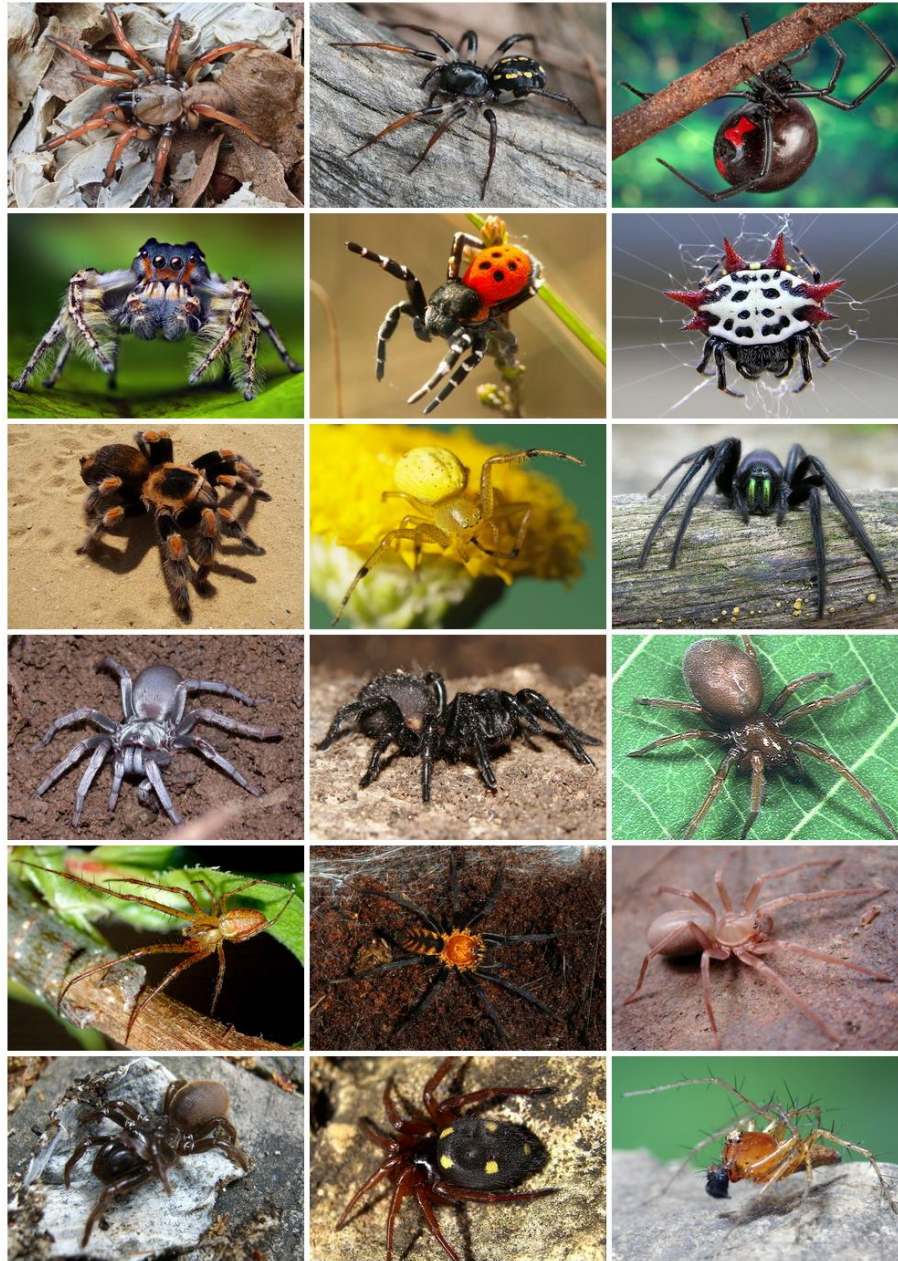


Nottingham's
SpiderLab



Sara Goodacre
University of Nottingham

Spider Science: models for studying adaptation



Spider Science: models for studying adaptation



White (2016)

From Spider Science to Public Engagement



SpiderLab@ Nottingham

<http://www.arachnotts.com/>

From Spider Science to Public Engagement

**“Nottingham's SpiderLab
champion wins public vote for 25
Genomes Project”**



SpiderLab@ Nottingham

From Spider Science to Public Engagement



SpiderLab @Nottingham on tour

<https://www.bbc.co.uk/programmes/p05bc7t7>

Combining Science with Public Engagement

Open Air Laboratories citizen science project



Soil



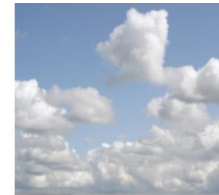
Air



Water



Biodiversity



Climate

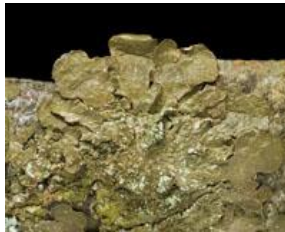
Combining Science with Public Engagement

- Nitrogen loving and nitrogen-sensitive lichens used as indicators of air pollution (Nitrogen oxides and ammonia).

- Nitrogen-sensitive



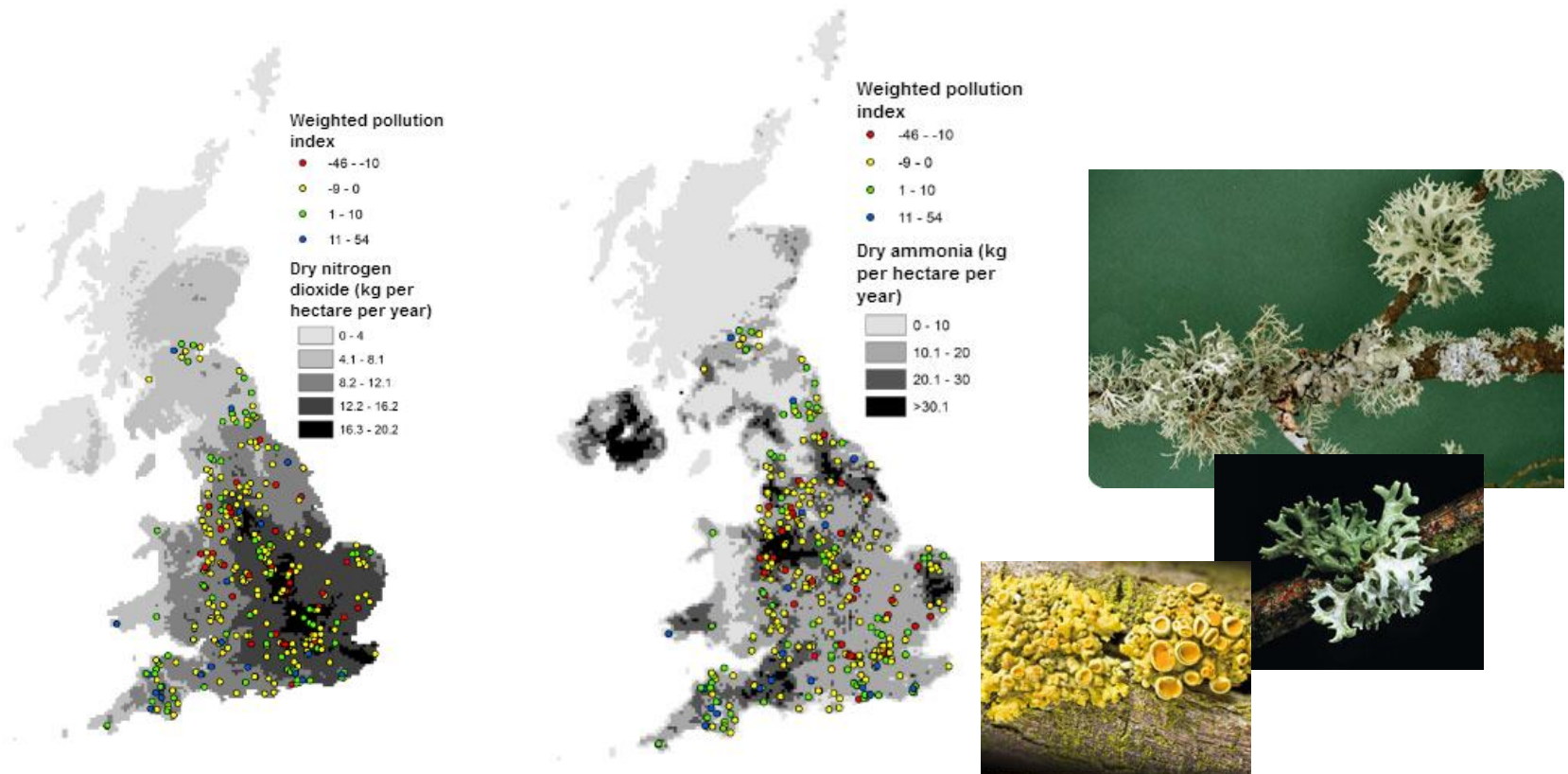
- Intermediate



- Nitrogen-loving



Combining Science with Public Engagement



- Seed et al. (2013): **Modelling relationships between lichen bioindicators, air quality and climate on a national scale: results from the UK OPAL Air Survey.** Environmental Pollution, 182:437–47.

Combining Science with Public Engagement



<https://www.dailymail.co.uk/news/article-6294953/False-widow-suspected-outbreak-closes-11th-London-school.html>

<https://www.standard.co.uk/news/london/ninth-london-school-in-newham-closed-due-to-venomous-false-widow-spider-infestation-a3959706.html>

Combining Science with Public Engagement



<https://species.nbnatlas.org/species/NBNSYS0000039460>

Combining Science with Public Engagement



<https://www.arachnotts.com/spider-school>

<https://www.bbc.co.uk/news/av/uk-england-derbyshire-40436916/derbyshire-pupils-experience-uk-s-first-spider-school>

Spider Science: academic research & public engagement



With thanks to the University of
Nottingham and all the members of
the SpiderLab