

Joining the dots. A bigger, better, joined approach to prioritising Anglian Water's assets

Chris Gerrard CEnv MCIEEM, Natural Catchment and Biodiversity Manager

@chrisgerrard





A living landscape

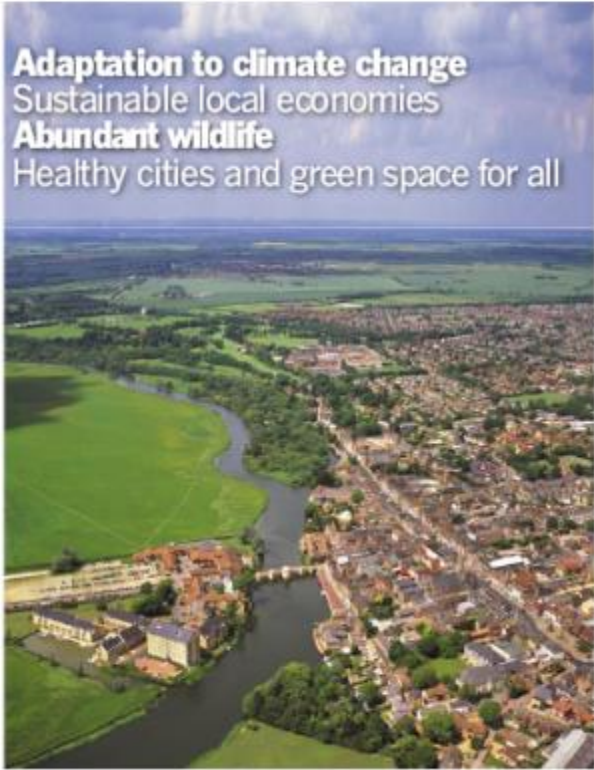
A call to restore the UK's battered ecosystems, for wildlife and people

Adaptation to climate change

Sustainable local economies

Abundant wildlife

Healthy cities and green space for all



love
every
drop.



anglianwater

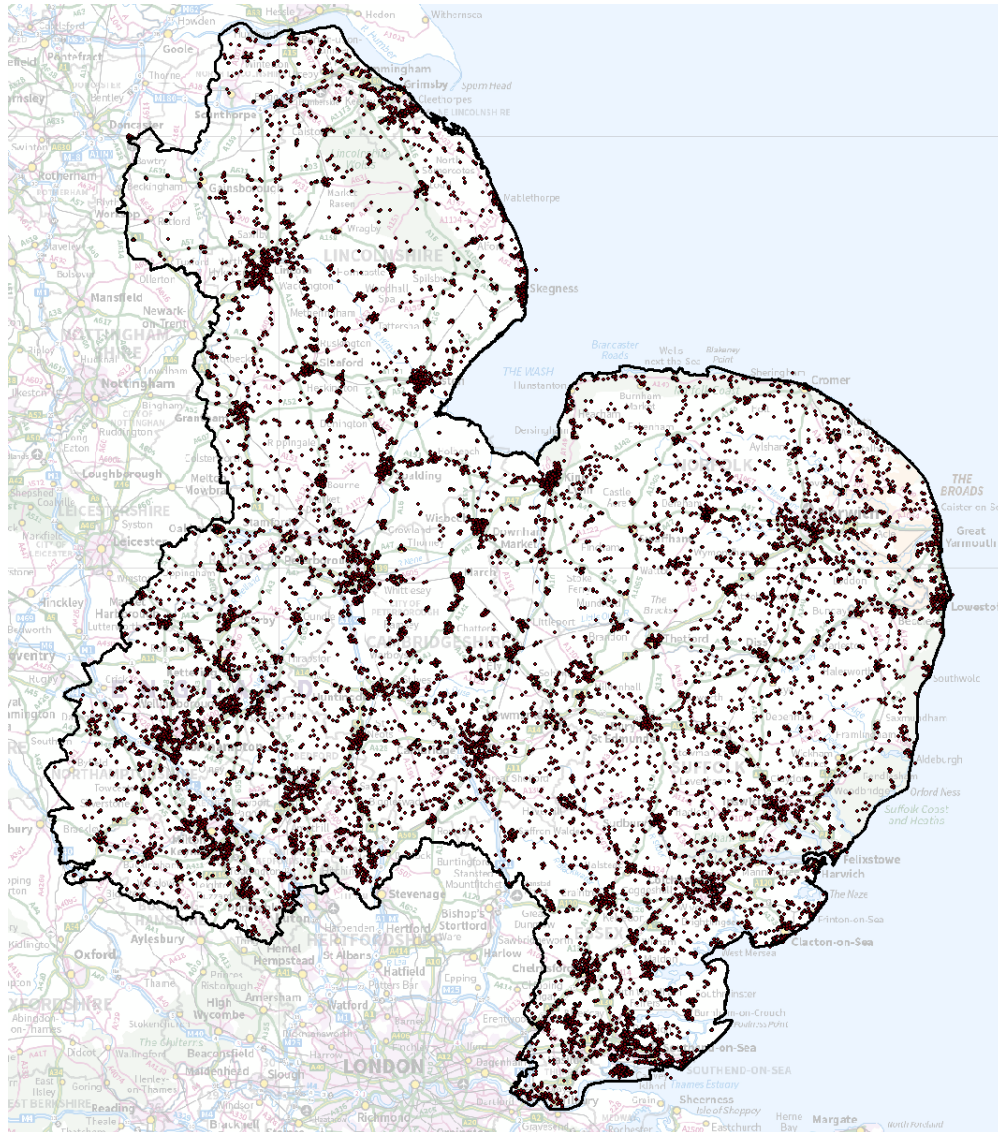





Identify location and extent of priority habitats on operational sites, screen against criteria such as size, proximity to protected sites, landscape scale conservation projects, species priority areas by March 2020. Develop management prescriptions for key sites in AMP7

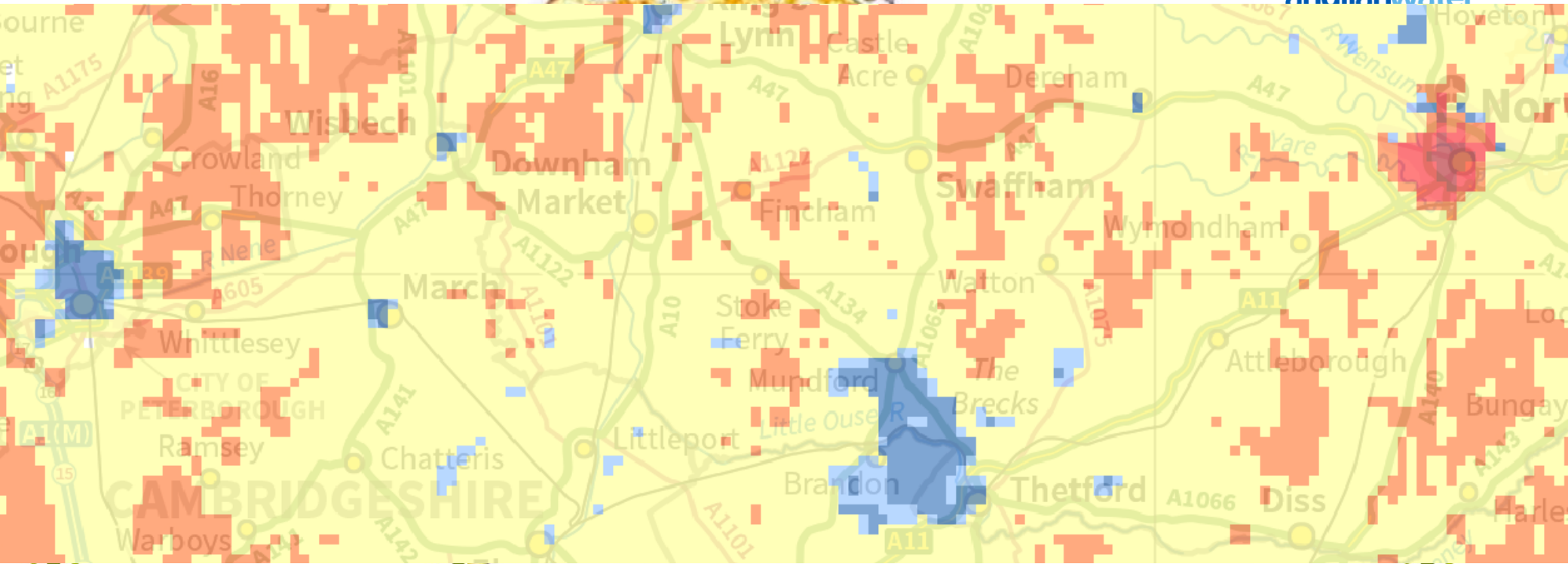
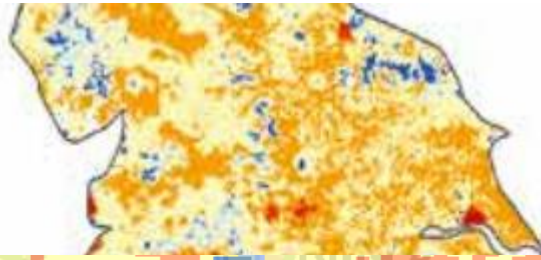
<https://www.anglianwater.co.uk/environment/our-commitment/our-projects/>





- **7000 assets**
- **7000 hectares**
- **49 SSSIs**
- **150 LWS**
- **1200Ha of priority habitat**
- **600 sites with priority habitat**
 - **500ha woodland**
 - **130ha lowland fen**
 - **130ha semi-natural grassland**

- 
- A photograph of a wetland area. In the foreground, there is a stream with water reflecting the sky and surrounding greenery. The stream is bordered by tall, lush green grasses. In the middle ground, there is a large, long, white industrial building with a flat roof. Behind the building, there are several tall, thin structures, possibly chimneys or towers, and a dense line of trees. The sky is bright and clear.
1. Enhancing management across the whole estate
 2. Focussing our resources on additional management for the best sites
 3. Assessing our construction activities to deliver no net loss/net gain



Applying the 'Lawton principles'

Better

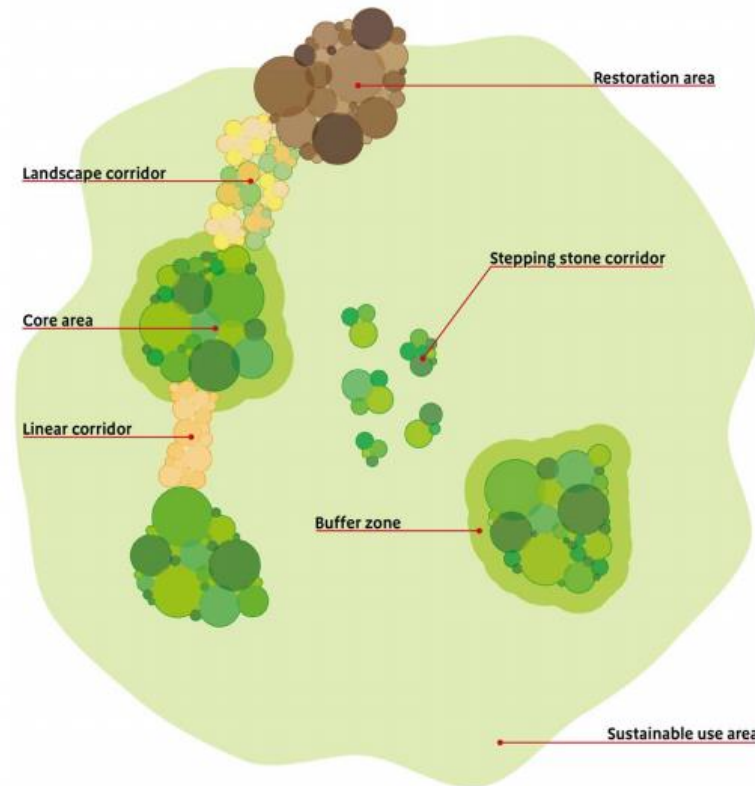
- Functionally significant habitat on site
- Biotope-specific species representation
- Species Quality Index

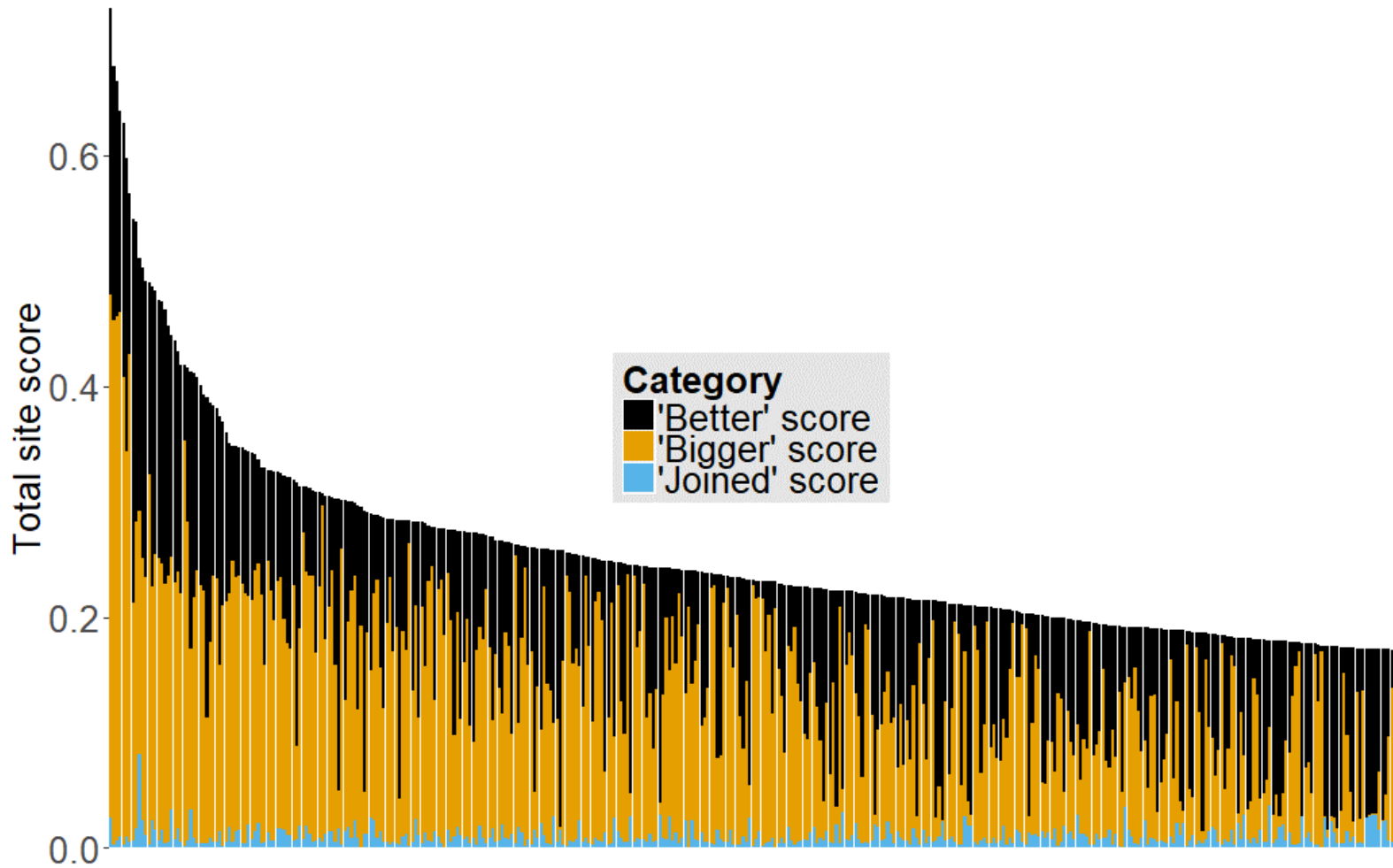
Bigger

- Saturating curve
- Intermediate curve
- Exponential curve

Joined

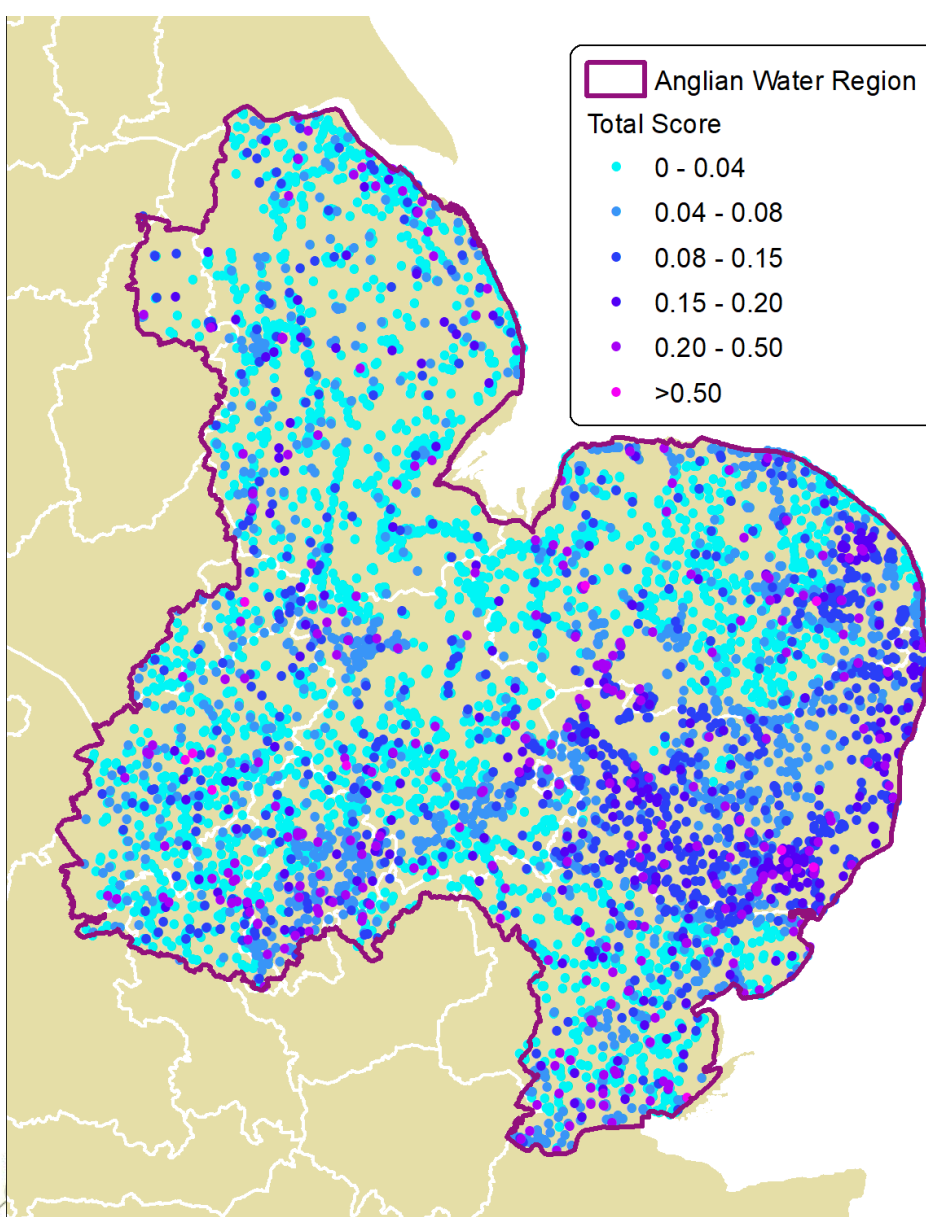
- Protected area network
- Connected priority habitats
- Landscape Scale Conservation Initiative



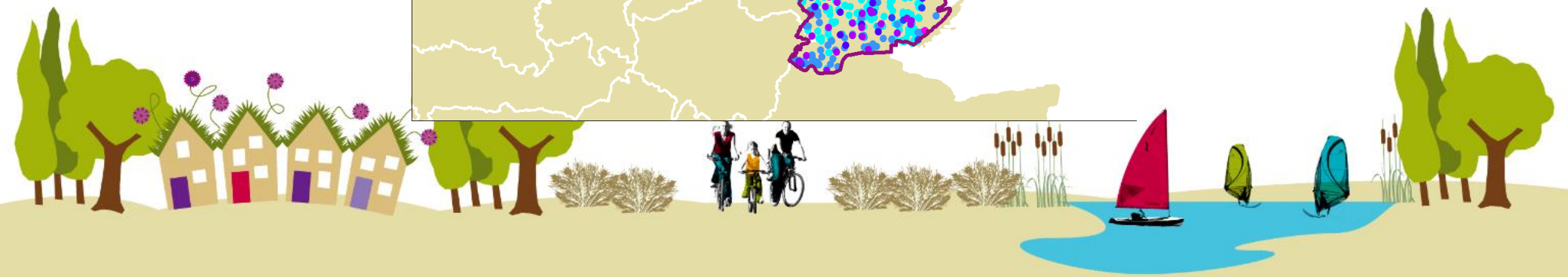




Google



love every drop.
anglianwater



Phase 2



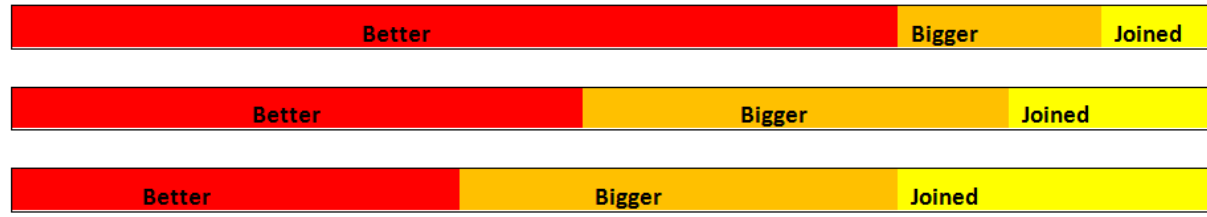
- Develop the analysis with more species records covering more taxa and a deeper understanding of process and habitat requirements
- Resolve issues such as recording effort which introduce bias
- Improving the spatial analysis of habitat patches
- Refining the weightings...



Weightings



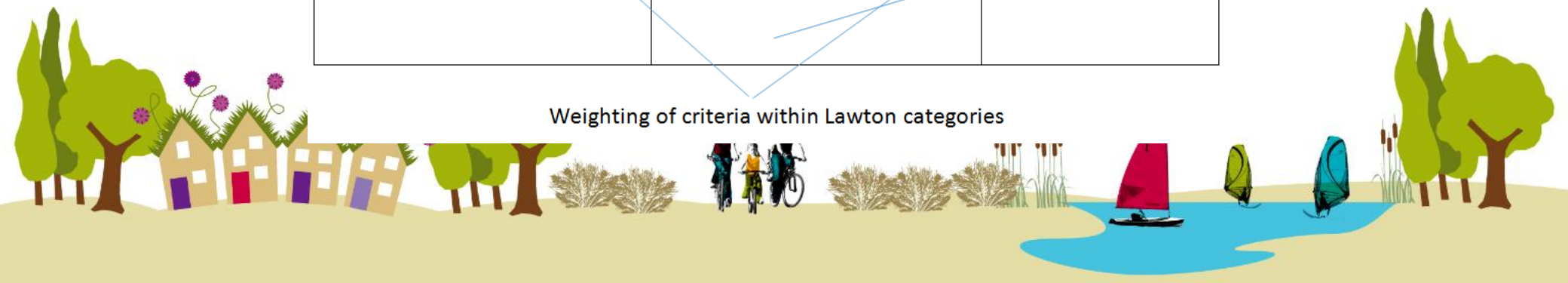
'Lawton review category weighting'



Better		Bigger		Joined
<u>Variable</u>	<u>Unit</u>	<u>Variable</u>	<u>Scale</u>	
% rep	-by 'coarse habitat'	Saturating		LSCI
SQI		Area	Intermediate	PA network
PHI	-'functional patch'	Exponential		% PHI in buffer

Vertical double-headed arrows are placed between the 'Better' and 'Bigger' columns, and between the 'Bigger' and 'Joined' columns. A blue line connects the 'PHI' row in the 'Better' column to the '% PHI in buffer' row in the 'Joined' column.

Weighting of criteria within Lawton categories



<http://www.smartsurvey.co.uk/s/ConservationPrioritisation/>



Thank you

biodiversity@anglianwater.co.uk