

RECORDER ~~1066~~

... AND ALL THAT

Steve Whitbread

Association of Local Environmental Records Centres



Formed in 2009, ALERC is an association between **Local Environmental Records Centres** (LERCs) in Great Britain. The Association aims to provide a central voice for the views and concerns of the Records Centre community, whilst building a **support-based network of knowledge and advice** to meet the needs of its members.

www.alerc.org.uk





A Local Environmental Records Centre is:

*A not-for-profit service run in partnership for the public benefit, which collects, collates, manages and disseminates information of known quality relating to the wildlife, wildlife sites and habitats for a defined geographical area.**

Or more simply:

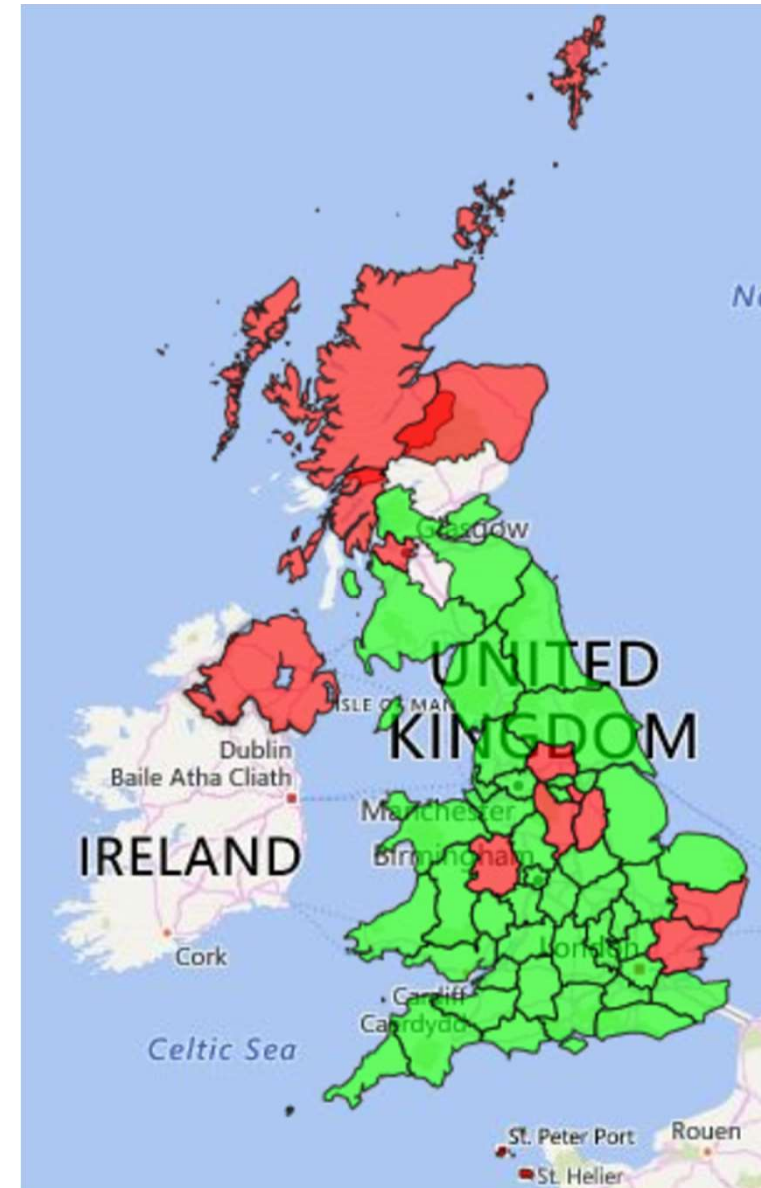
A one-stop-shop for ecological information and a valued resource for the local community'

*National Biodiversity Network Position Statement on Local Records Centres, 2004

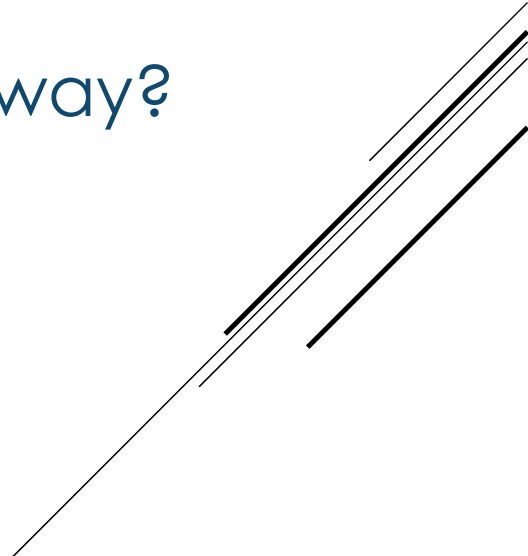


A Local Environmental Records Centre is likely to:

- ▶ Promote and **support** recording by groups and individuals
- ▶ Facilitate **communication** and relationship development
- ▶ Encourage and **facilitate** involvement in local recording
- ▶ Foster recording, survey and identification **skills** development
- ▶ Check and **collate data**, ensuring that their quality is known
- ▶ Offer a **secure archive** for local recording, surveillance & monitoring data
- ▶ Be able to provide **information** necessary to guide local/regional
 - ▶ *Conservation strategies & delivery at local and landscape scale*
 - ▶ *Planning and land-use strategies*
 - ▶ *Individual planning applications*
 - ▶ *Support research and education*
 - ▶ *Inform individuals and communities about their natural heritage*
- ▶ **Share** data nationally: Schemes and societies, the NBN Atlas system, major initiatives



BY WAY OF INTRODUCTION...

- ▶ A little bit of background
 - ▶ What's happening with **Recorder 6** anyway?
 - ▶ So what's next?
 - ▶ And why should we care?
- 

Recorder 2002

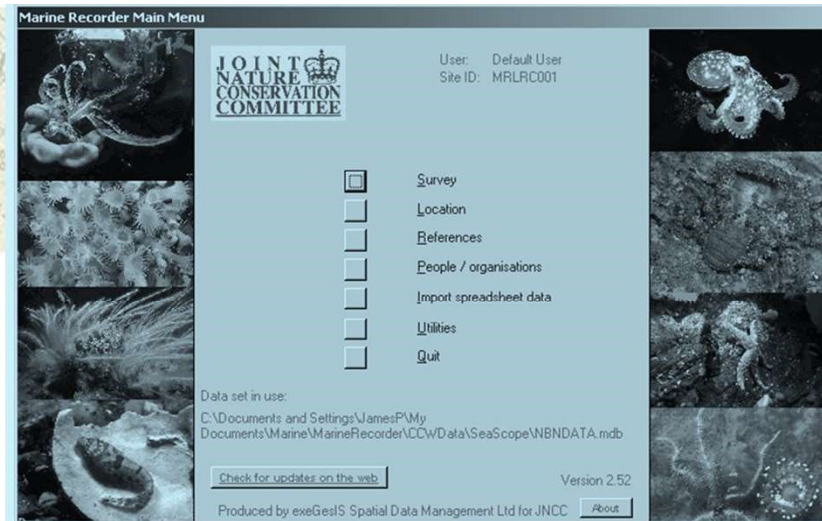


Recorder 6

JOINT NATURE CONSERVATION COMMITTEE

National Biodiversity Network

Built to NBN standards by Dorset Software Services Ltd.



MapMate®

RECORDER

3



Living Record makes it quick and easy for you to record the wildlife that you see. It provides you with your own records system and access to a selection of distribution maps.

Records are reviewed and passed on to local record centres and to organisations working for conservation. Your records form part of the big picture which is used nationally and locally to understand species distribution and population trends, to identify key sites and to develop conservation plans.

Log in for existing Living Record members

Join to join the Living Record Team

Why join in? **Leaflet** **Contact us**

Verifiers can now add comments to your records...

Comments may ask for more information or suggest improvements to your records. You can reply with your own comments. See verification comments when your records are listed below the map. Find new comments using the Possible Issues page.

Now with Sawflies and Plant Galls, including a checklist for the galls described in the WILDGuides book "Britain's Plant Galls". Find these under **New Additions** on the Options page.

Living Record excels as a conservation-support tool for organisations and groups responsible for the ecological management of land: of sites, estates, **farmer clusters**, boroughs, landscape-scale conservation projects etc.

If you are involved with such an organisation, please **Contact us** to find out how we can help you.

Congratulations! On 30 October, we passed 1,000,000 records!
4,584 new records entered during the week, 854 on the day.

The iRecord website interface includes a search bar at the top right. Below the header, there are links for Home, Record, Explore, Forum, and Help. A section titled "Try our new app" promotes a mobile app for recording on the go, with download links for the App Store and Google Play. A login section asks for a username or e-mail (steve@nuthatch.plus.com) and a password, with options to create a new account or request a new password. A "Recent records" section displays a grid of six images with their respective species names: *Palomena prasina* (Green Shieldbug), *Dolycoris baccarum* (Sloe Shieldbug), *Potentilla reptans* (Creeping Cinqufoil), *Thymelicus sylvestris* (Small Skipper), *Pteropoea amphibia* (Great Yellow-cress), and *Stachys palustris* (Marsh Yarrowroot). A "Welcome to iRecord..." message describes the site as a platform for managing and sharing wildlife records, accompanied by a photo of people in a field. At the bottom, there are links for "How to use iRecord" and "Find out more".



Adnoto - BNHS Online Recording Forms

Forms for sending records to the County Recorders:

| | | | | |
|-------------------------------------------------|------------------------------------|---------------------------------|------------------------------------|--------------------------------------------------|
| Amphibians & Reptiles 16/1063 | Arable Plants 38/152 | Bumblebees 13/589 | Butterflies 52/17959 | Crickets & Grasshoppers 14/270 |
| Dragonflies 33/6452 | Mammals 42/5207 | Orchids 42/2945 | Tiger Moths 4/65 | Woodlice 9/63 |

Numbers = Species/Records entered into database

Forms for publicly-visible surveys:

| | |
|-------------------------------|----------------------------------|
| Glow worms 1/64 | Tiger Beetles 1/12 |
|-------------------------------|----------------------------------|

Email registration, mapping and record management...

[Register an email address/change its password](#) [Map records / Atlases](#) [Download records](#) [Delete record\(s\)](#)

The BirdTrack website interface features a header with navigation links: About BirdTrack, Taking part, Maps & reports, Bird recording, Surveys, and a search bar. A main map of Ireland shows recording locations with red squares. A sidebar on the left contains links for "You are logged out", "Your options", "My details & settings", "Add records", "My records", "Sites", "Help", and "Global data entry". Below the map, there is a "BirdTrack Partners" section and a "Global BIRD PORTAL" link. A "Graph guide" section explains the reporting rates (percentage of complete lists) and shows a line graph for *Pintail Anas acuta* with a blue line for the current year and a red line for historical data. A "Top BirdTrackers" section lists the top 5 complete lists for the month and the top 5 species recorded this year. A "BirdTrack photos" section shows a grid of photos and a link to "See more BirdTrack on Flickr". A "More BirdTrack" section includes links to Twitter, Smartphone app, and BirdTrack news.



Submit Records

- **What did you see?** Use the common name in either English or Welsh, or the Scientific name.
- **Where did you see it?** Include a grid reference (at least 6 figure) and if possible a location name e.g. SH123456, Pant Glas Farm.
- **When did you see it?** Ideally this should be the exact date, however the month, year or a date range is also acceptable.
- **Who saw it?** Provide the full name of the person who saw the species.

Data submitted to Cofnod will be checked before it is entered into our main database. It will only be used for conservation purposes, in accordance with the policies available from our [Library](#).

Register Log In

Cofnod's Online Recording System (ORS) is ideal for anyone who records wildlife, but would prefer not to store the records on their own computer.

[Find a Local Expert](#)

Local experts help check, collate and distribute species records. Each covers a defined area and group of species. Submit your records to them and they'll find their way to us.



Whether it's a single species record or a spreadsheet or database, email us your records and we'll make sure it gets into the system. Download the [Cofnod Recording Spreadsheet](#) to help you manage your records.

Email Us Your Records

 [Contact Us](#)

Find Us

Cofnod, Intec, Ffordd y Parc, Parc Menai,
Bangor, Gwynedd. LL57 4FG
(01248) 672603

Opportunities with Cofnod



Recs this month: 4,018
Latest list: Trev Taylor, 24 spp, 30/10/2017
News update: [Shearwaters soar but sandpipers struggle](#) - Record count of Wilson Petrels logged on BirdTrack



Graph guide

Reporting rates (the percentage of complete lists that contain each species) are a powerful way of visualising the arrival and departure times of migrants. They also highlight seasonal changes in the 'detectability' of resident species.

The blue line shows the reporting rate for the current year, the red line shows the average reporting rate for all previous years. Hovering over a data point reveals the statistics for that week.

Species:

Go ?

| Top BirdTrackers | |
|----------------------------|----|
| Complete lists this month | |
| 1. Glyn Owen | 4 |
| 2. Brian Edge | 4 |
| 3. Terry Robinson | 3 |
| 4. David Bordenick | 3 |
| 5. Moss Taylor | 3 |
| Species recorded this year | |
| 1. Lee Evans | 34 |
| 2. Graham Jones | 28 |
| 3. John Marshant | 27 |
| 4. Frank Clark | 27 |
| 5. Steven Caney | 26 |

BirdTrack photos



[See more BirdTrack on flickr](#)
[Add your photos here.](#)

More BirdTrack



SEWBR**e**Cord

SEWBR**e**C Online Recording Database

[Home](#) [Record](#) [Explore](#)

Welcome to SEWBR**e**C's Online Recording Database (SEWBR**e**CORD), a site for managing and sharing your wildlife records from our corner of Wales.

The primary purpose of SEWBR**e**CORD is to make it easier for wildlife sightings to be collated, checked by experts and made available to those that need them for their research or decision making.

By registering with us you will be able to share your sightings with the recording community, explore dynamic maps and graphs of your data and make a real contribution to science and conservation. Please note that although this system is based on the same technology as iRecord and other Indicia systems, it is a separate entity and your existing log-ins will not work here.

Please also remember that the recent records map only represents records that have been entered into this system and does not show all records held in SEWBR**e**C's main database system.

South East Wales Biodiversity Records Centre (SEWBR**e**C) is the centre for the collation, management and dissemination of biodiversity data for South East Wales. Our aim is to make appropriate local biodiversity information available to all those who need it, to help ensure that decisions which affect local biodiversity are made using best available data. For more information about us, please visit our main website: <http://www.sewbrec.org.uk>.

If you have tried to register but have not received your notification email then please check your spam folders.

User login

Username or e-mail *

Password *

[Create new account](#)

[Request new password](#)

[Terms & Conditions](#)

Powered by Indicia

Premium Drupal Theme by [Adaptivethemes.com](#)

[Contact Us](#)

Cofnod, Intec, Ffordd y Parc, Parc Menai,
Bangor, Gwynedd. LL57 4FG
(01248) 672603

[Find Us](#)



Opportunities with Cofnod





iRecord Grasshoppers



Lichens - nitrogen air quality



iRecord Butterflies



Plant Tracker



iRecord Ladybirds



+ New sighting

Settings



Screen shot of iRecord Ladybird app
Picture: CEH



iNaturalist

iNaturalist Education

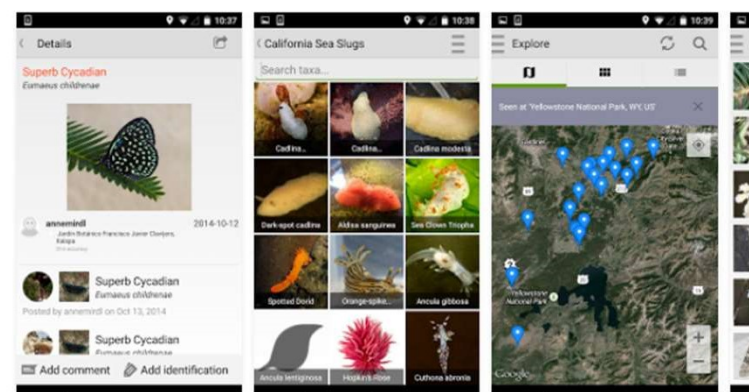
★★★★★ 1,064

PEGI 3

This app is compatible with all of your devices.

Add to Wishlist

Install



The Gilbert 21 Project

Personal Biological Recording Software

[Home](#) [Datalogger](#)
[G21App](#) [Software](#)
[Downloads](#) [Blog](#) [Help](#)
[Contact](#)



[Guiding principles](#) | [Why Gilbert 21?](#)

Gilbert 21 homepage

The Gilbert 21 project provides free biological recording software for people who want to record wildlife and use their records to learn about natural history. Read more about the background to the project [here](#), or go to the [downloads](#) page to get the software. Read the [quick-start guide](#) to get up and running quickly.



Cicada Hunt

The New Forest Cicada Project Education

PEGI 3

This app is compatible with all of your devices.



And many, many, many more...



Recorder 6 Announcement: Investigating online recording

In September 2013, the Recorder 6 Steering Group (JNCC, Natural England, Natural Resources Wales and Department of Environment NI) announced **a position of interest in emerging online recording and data management tools across the National Biodiversity Network**. Over the course of this year, the Steering Group will fully investigate the option of investing funds in the development of online recording tools, with a view to ceasing support for Recorder 6 once the online environment contains core Recorder 6 functionality. **The investigation will involve assessing existing online tools against a set of key criteria, identifying core Recorder 6 functionality, and assessing the development gap.**

<...>

Further information on the investigation and any progress updates will be released in due course.

Why is the Steering Group investigating online recording?

Technological advances continue to offer new ways for the community to tackle common data management issues collectively through shared tools. There is an opportunity for gained efficiencies through the deployment and maintenance of a central toolkit, and improved effectiveness in terms of direct data access for expert verifiers and direct feeds to data applications (data input through online recording and data output through web-services). If such opportunities are rejected then the project as it stands loses justification in light of continuing resource cuts.

For full message see:

<https://forums.nbn.org.uk/viewtopic.php?id=5444>



Recorder 6 Announcement: Investigating online recording

Over the course of **[2014]**, the Steering Group will fully investigate the option of investing funds in the development of online recording tools, with a view to ceasing support for Recorder 6 once the online environment contains core Recorder 6 functionality.

The investigation will involve assessing existing online tools against a set of key criteria, identifying core Recorder 6 functionality, and assessing the development gap.

Further information on the investigation and any progress updates will be released in due course.

<https://forums.nbn.org.uk/viewtopic.php?id=5444>



It has now been decided that the existing arrangements for financial and administrative support for Recorder 6 will cease, as of March 2018.

The existing Recorder 6 partners are actively discussing options going forward for both the existing Recorder 6 package, and a possible online replacement, with the NBN Trust, and more information will be made available in due course.

Joint Nature Conservation Committee, Natural England and Natural Resources Wales
06 November 2017
Contact: recorder@jncc.gov.uk

<https://forums.nbn.org.uk/viewtopic.php?id=7028>

The last few years have seen significant developments for the online recording of biological data. Across the NBN, the benefits of online recording, in comparison with traditional standalone desktop tools such as Recorder 6, have been recognised, and many have adopted such tools as part of core data management systems.

Within this same timeframe, core funding for the Recorder 6 package has been decreasing, owing to increasing software stability (ie fewer bug fixes), problem solving and knowledge sharing through the NBN forum, but also decreasing availability of funds to invest among the partners. In addition, risks have been growing around the package, and the partners have started investing staff time and financial contributions in online recording. Also in the last year, the open data initiative has renewed a focus on maximising data flows and making best use of open data.

Recorder 6 Consultation

ALERC's London and South East Region group (LaSER) with funding provided by **GiGL** and **SxBRC** have asked Andy Foy to undertake a consultation amongst potential users about:

- Their uses of Recorder and other database systems
- The Recorder 6 features they use
- The best/worst features of Recorder 6
- Their support needs
- How long they consider they are likely to continue to use Recorder 6
- How much they might be willing to pay for ongoing



GiGL

Greenspace Information for Greater London CIC
the capital's environmental records centre



**Sussex
Biodiversity
Record Centre**

The Source for Biological Information in Sussex



Recorder 6 Consultation

1 About you 2 Recorder 6 3 Comments

This form has been designed to gather as much information as possible about who uses Recorder 6, how they use it, what they most like and dislike about it, and how it should be financially supported. It should take 20-40 minutes to complete depending on your responses.

You can save your progress on this form at any time by clicking on the "Save" button at the bottom. You will then be given the option to copy or email a link to return to your form and complete your submission.

If you are submitting the form on behalf of an organisation please ensure that only one submission is completed per organisation.

About you?

Name *

Steve

Whitbread

Email Address *

recorder@nuthatch.plus.com

Are you completing this consultation as an individual or organisation? *

☒ Individual

☐ Organisation

Do you share your records with any of the following types of organisation? [Select all that apply] *

☒ Local Environmental Records Centre

☒ National Conservation Organisation (e.g. RSPB, Butterfly Conservation)

☒ Local Conservation Organisation

☒ National Recording Scheme/Society

☒ Local Recording Group/Scheme/Society

☐ NBN Atlas

☒ Other (please specify below)

☐ None of the above

Other types of organisation(s) that you share records with *

Employer (Local authority)

Next

Save

<https://www.cognitofrms.com/SxBRC/Recorder6Consultation>



Please respond
before
December 15th

THE FUTURE - Considerations

Brexit

Statutory obligations

Statutory reporting

25 Year Plan for the Environment

Earth Observation

Ecosystem Service Provision

Natural Capital approach

Agri-environment subsidies

Urban Greening

Net Gain

Biodiversity offsetting

Over the next few years, a number of new and evolving drivers & policy-based approaches are likely to have a considerable impact on the types of information (service) and the underlying data that will be required. Any new recording database proposals should take account of these needs.

Open Data
positives & negatives

Effective database systems

Climate change

Population change

P.S. Why not set +ve targets for habitat patches/species numbers for the 2050's rather than just looking back to the 1970's?

THE FUTURE - Considerations

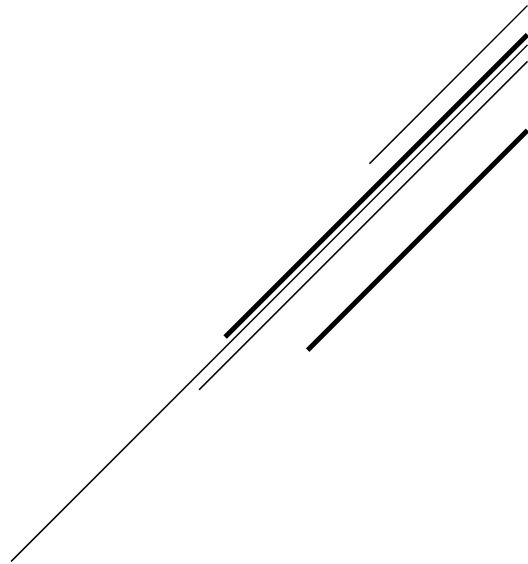
As well as just meeting information needs online systems (in combination with suitable apps) could be set up to

- Assign universally unique identifiers to records
- Notify you when the first record of species X has been recorded for the year in an adjacent vice-county or surveillance location near you
- Advise what species (in the species group(s) in which you are interested have previously been recorded at the site/square(s) you're planning to visit today (but haven't been recorded there for the past 5 years) etc.
- Help you log time spent surveying using certain methods at a particular location (in relation to negative records and effort mapping)
- Or, if you're a scheme organiser help you target recording effort to achieve a more sample based approach to fill in the gaps (whilst still encouraging recorders to target the hotspots). *As we heard from Mark earlier, there are an awful lot of species in the UK about which records are insufficient to provide trend data. What database advances would actually strengthen the information produced by the State of Nature Partnership at a local and national level?*

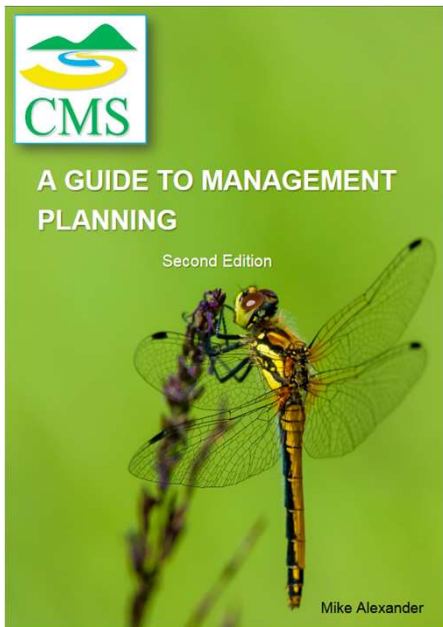
And lots more besides.



AND ALL THAT...



AND ALL THAT...



Conservation Management System

- CMS originally a stable mate to Recorder 3 at the Nature Conservancy Council
- Owned by CMS Consortium but system managed by commercial firm Exegesis
- Doldrums for a while after take over (early 2000s) but large injection of cash in early 2010s, resulted in CMSi with mobile apps able to feed data into the system
- >50 organisations use it worldwide, from single sites to complete national protected sites system (e.g. Natural England, NRW) >1750 users including, RSPB, Wildlife Trusts, Local authorities.
- Annual development budget c. **£300k** p.a.

N.B.

Successfully self funding

Different fee levels for different user types

Driven mainly by large corporate users

Compare cost of Recorder 6 & support provided by Exegesis

Consider what proportion of 2nd tier conservation sites are covered. Could this have been rather different? Users excluded by cost?

AND ALL THAT...

Biodiversity Action Report System

- Developed as a means of collating information on BAP progress
- Always seemed to be provided more to enable national agencies to collect data together rather than as a means of enabling those involved with BAP delivery to plan and to communicate effectively to ensure successful delivery
- It was very much a tool for doing extra work rather than something which facilitated and saved time in carrying out work that had to be done
- Highlighted the tensions between stakeholders with different objectives



N.B.

Provided for free

Redeveloped as an online tool to overcome firewall problems

Belatedly redeveloped to add spatial/mapping capabilities

BARS reporting was made obligatory as part of grants supporting BAP delivery

Despite this fewer than half of planned actions were reported

AND ALL THAT...



Lite

Recorder 6 Lite & RecorderWeb

- **R6 Lite** was proposed amidst the ongoing development intended to turn what had been Recorder 2002 into a bomb-proof, ultra-capable battleship of a recording database
- Unfortunately, those recorders who simply wanted something that would give them what they had had in Recorder 3 but which would run under Windows gave up and MapMate became the database of choice for those who just wanted to store, share (sync) and plot data.
- **RecorderWeb**
- What might have been the first major database to adopt an online aware and then fully online approach also never materialised, again largely as a result of resource issues.

N.B.

R6 Lite could have added significantly to the overall user base (& support for Recorder)

Development of RecorderWeb might also have meant that we would now in a very different position

AND ALL THAT...

Second Site

- Developed for reporting on the positive conservation management of local, 'second tier' wildlife sites in connection with local authority obligations
- Able to import data from the NBN Gateway (and potentially other sources)
- Spatially enabled with mapping facilities – could view all sites in a county where , e.g. a particular activity was planned or see compartments and sub compartments on a site
- Provided different levels of access to the system so that different users could be informed about, involved in, report on or plan actions ,allocate tasks and monitor progress

S2

N.B.

Ideal tool for making the most of different levels of commitment/involvement from staff, volunteer groups and contractors

**Created and made available for free.
Utilised in several areas but failed to secure funding for support and on going development**

AND ALL THAT...

The Twenty Year Environment Plan

- Consider the needs, capabilities, motives and willingness of the intended target audience(s)/users
- Make provision for adequate ongoing support
- Respect established standards and ensure interoperability
- Seek to move things forward for all
- Avoid wheelyness (whilst encouraging useful innovation)

Because

N.B.

Whatever happens with Recorder 6 and any successor needs to be driven by the Network and not just by one sector or a few unrepresentative bodies

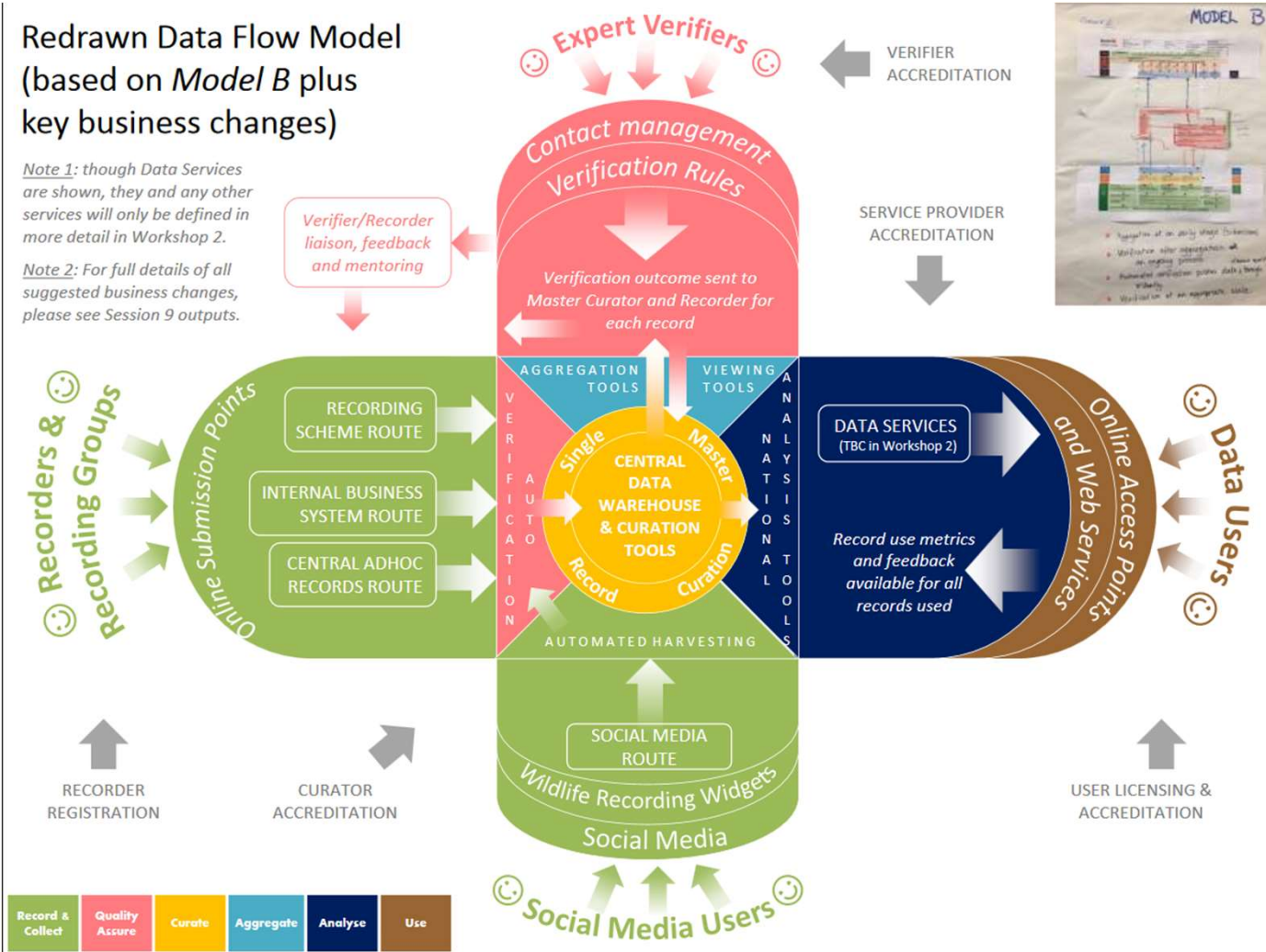
Adequate resources will be needed for development and ongoing support

†

Redrawn Data Flow Model (based on *Model B* plus key business changes)

Note 1: though Data Services are shown, they and any other services will only be defined in more detail in Workshop 2.

Note 2: For full details of all suggested business changes, please see Session 9 outputs.



Thank you

Especially to all those who've helped develop Recorder and other databases, directly or by passing on criticisms and ideas, making everyone else's jobs easier/more interesting.

Above all, thanks to those who have provided support (and sympathy) for helping us get to grip with those assorted systems. And to Mike Weideli and Sally Rankin, in particular.

Lastly, a big thank you to the mystery benefactor who has offered to fill the funding gap so that support for Recorder 6 can continue (at a reduced level) over the next financial year.

