

## NBN ATLAS: A CONSULTANCY PERSPECTIVE



Presented by Dr Rachel Roberts, Associate Ecologist, TEP

## TEP IS AN AWARD WINNING ENVIRONMENTAL CONSULTANCY WORKING FOR PRIVATE, PUBLIC AND THIRD SECTOR CLIENTS

- Design, planning and environmental consultancy
- Founded in 1997
- Headquartered in Warrington
- More than 120 employees across five offices in the UK
- Warrington, Market Harborough, Gateshead, London and Cornwall
- Sectors include Residential, Education, Local Authority, Government Body, Energy and Infrastructure
- ISO 9001 ISO 18001 and ISO 14001 accredited.



## THE ENVIRONMENT PARTNERSHIP

**1 Warrington**  
01925 844 004

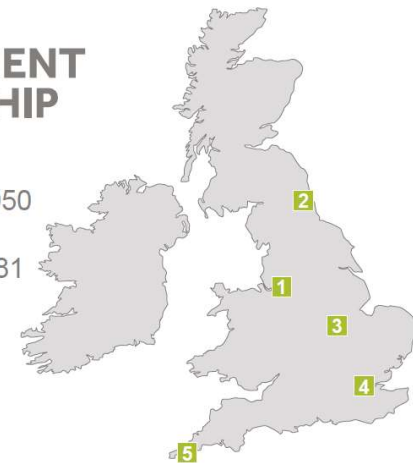
**2 Gateshead**  
0191 605 3340

**3 Market Harborough**  
01858 383120

**4 London**  
020 3096 6050

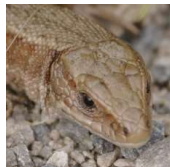
**5 Cornwall**  
01326 240081

tep@tep.uk.com  
www.tep.uk.com



## Services Offered

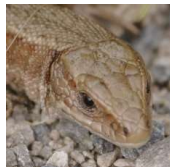
- Ecology
- Landscape Design
- Environmental Assessment
- Arboriculture
- Landscape Management
- Landscape Assessment
- Historic Environment and Archaeology
- Vacant and Derelict Property Management
- BREEAM (Ecology)
- Air Quality and Noise Assessment
- Green Infrastructure
- Urban Design
- Town Planning
- GIS Mapping
- Visualisations
- Community Engagement



## Commercial Application

Pre-existing records:

- ❖ Allow early identification of potential ecological considerations
- ❖ Cover greater spatial area
- ❖ Cover extended time periods
- ❖ Reinforce and support field survey findings – ensures a comprehensive baseline
- ❖ Aid targeting proportionate mitigation, protection and enhancement measures where they are most needed. This in turn secures the best possible outcome for biodiversity during development.



## Commercial Application

- ❖ Preliminary assessment
- ❖ Inform scope for field surveys
- ❖ Highlight likely ecological interest ('development risk' / 'ecological opportunities') at an early stage
- ❖ Influencing protection and mitigation measures
- ❖ Inform opportunities for biodiversity gain (e.g. targeting mitigation/compensation to address species declines)
- ❖ Aid to decision making e.g. options studies



## Opportunities

- ❖ Submission of species records as part of licence requirements
- ❖ Majority of data collect by consultants is destined for public domain
- ❖ Field data recorded/digitised & presented using GIS
- ❖ Consultants often gain access to previously inaccessible areas
- ❖ Species photographs
- ❖ Commercial data partnerships?

