



How to Find Treasure

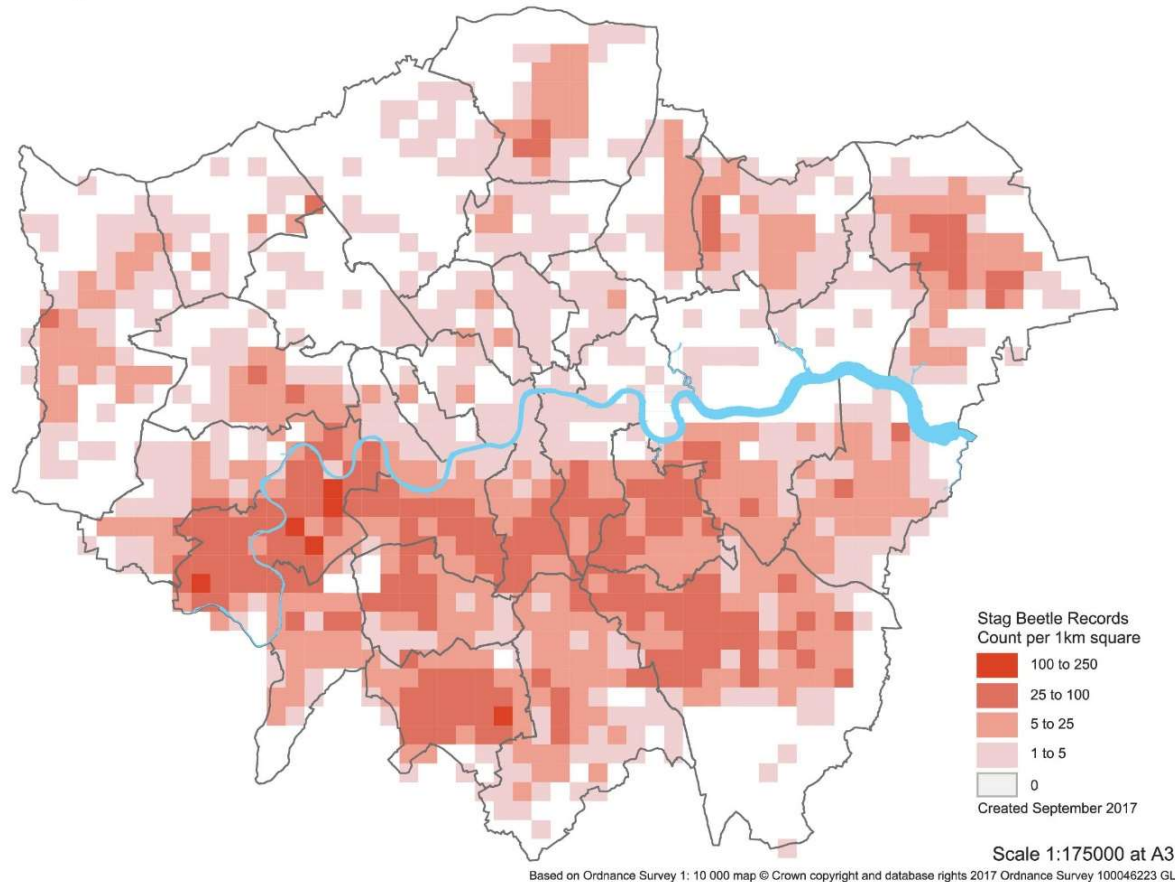
Greenspace Information for Greater London CIC

the capital's environmental records centre



Stag Beetle Records in London

Distribution & density of *Lucanus cervus* records 1985 - 2017



“walking slowly towards the hair dressers”

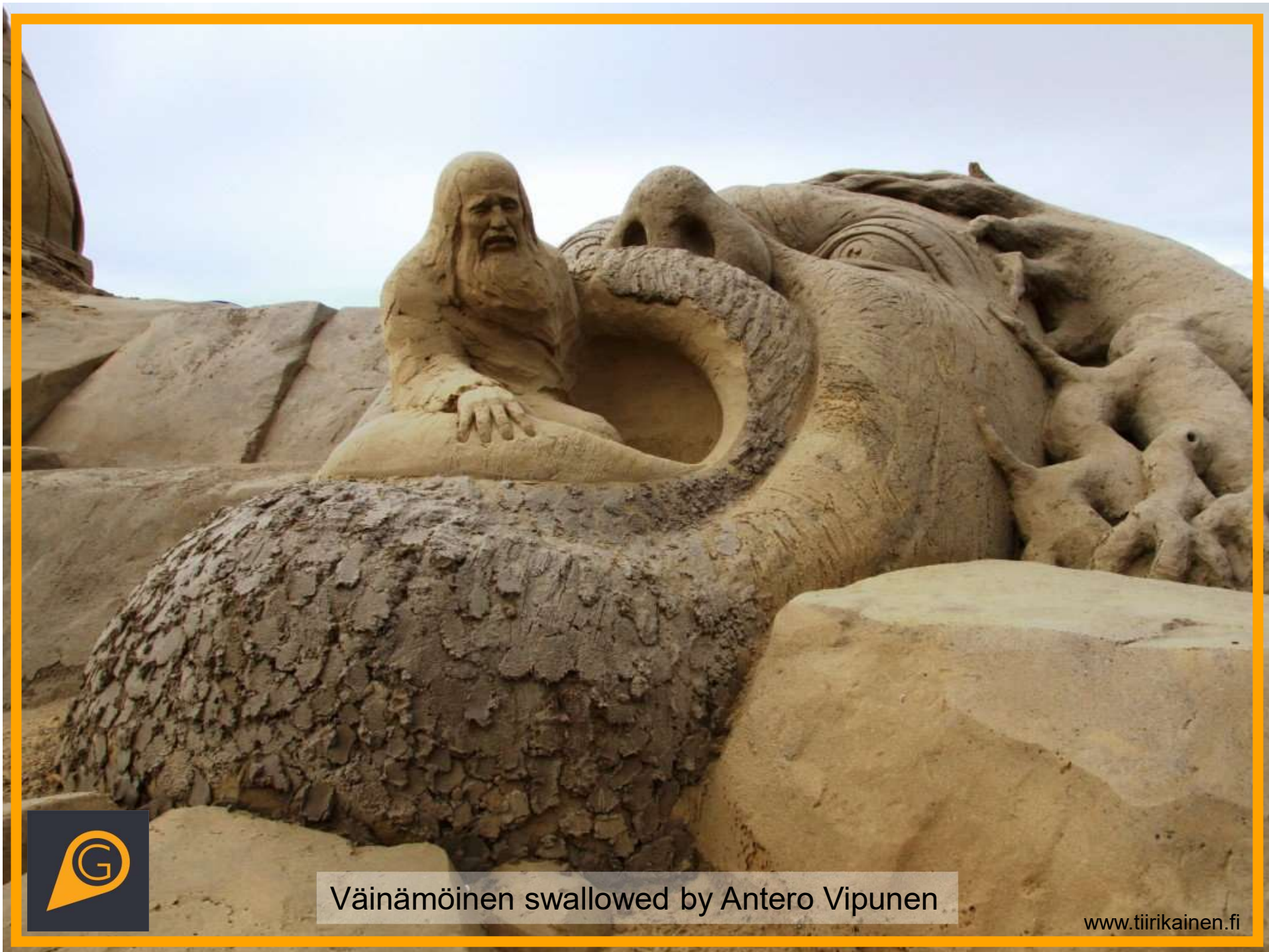
“Appeared to be sun bathing! In the middle of a path with his antlers up.”



“This 50mm beauty tried to fly in my back door last night.
I've kept her safe, to be released after dark.”



Illustration © Mauri Kunnas



Väinämöinen swallowed by Antero Vipunen

www.tiirikainen.fi



WELCOME TO THE ZOONIVERSE

People-powered research

[See All Projects](#)

WHAT WILL YOU DISCOVER?

Participate in research of all kinds, from classifying galaxies to counting penguins to transcribing manuscripts. Whatever your interest, there's a Zooniverse project for you.



GALAXY ZOO

Help us discover the secrets of galaxy evolution by classifying galaxies.

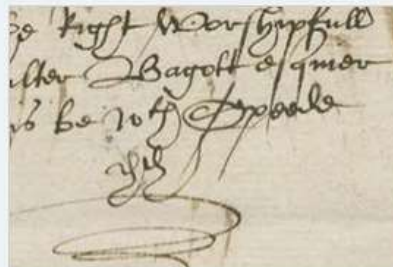
[View Project](#)



CHIMP & SEE

Discover the secret life of chimpanzees. We need your help to study, explore, and learn from

[View Project](#)



SHAKESPEARE'S WORLD

Transcribe handwritten documents by Shakespeare's contemporaries and help us understand his life and

[View Project](#)



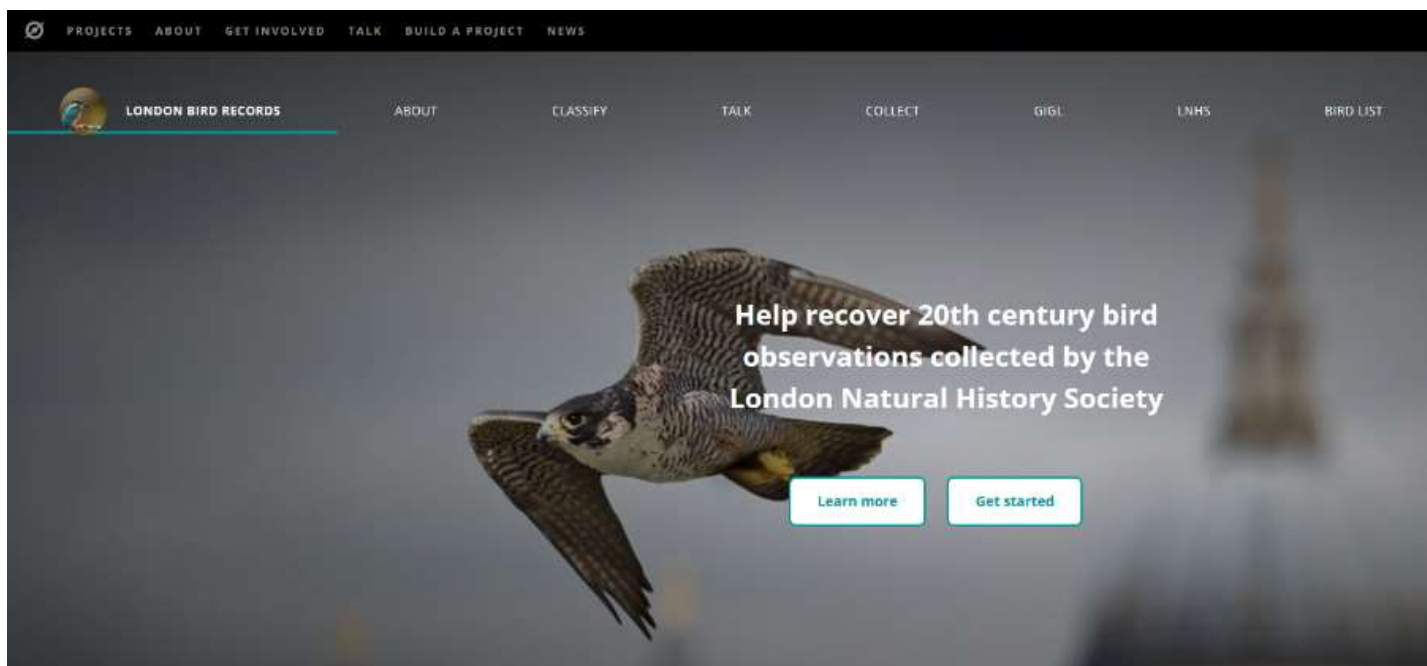
MUON HUNTER

Help astronomers to find elusive muons disguised as gamma rays!

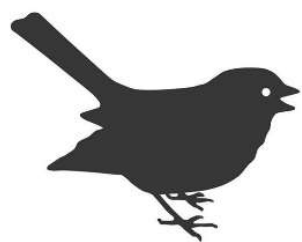
[View Project](#)



www.zooniverse.org



[LONDON BIRD RECORDS STATISTICS](#)



London Natural
History Society

0
Completed Subjects

www.lnhs.org.uk





SURREY 19 69 70				WILLOW TIT (SPRING)	293
CATERHAM BRICK WORKS	MAY 3	2 hrs	} no evidence of breeding	J.G. MANK (LON)	
SEALDON WOODS	MAY 2	1 hr			
NICHOLSON LANE	JAN 11	1			
CATERHAM	MAR 25	+8		FFB. MARTIN	DA. COLETTAN
NEW LINES					
BLACKLANDS PARK	JUN 18	Family party		AG. CHANNER	
CAMPBELL WOODS RES	MAY 9	2 hrs	mating	RHS. FOSTER	
BURGH HALL	JUN 18	+ Family party		"	
ASPLEYD COTT	JUN 5	Phyog	in nest. Last report by young birds but 3 nestlings present & taken to Hordlegh and put in blue box to nest & sent fed & fledged with 1st even 8 young	H.J. CONWARD	
	JUN 18				
BROOKMAN CAMP		at 4 yrs	in feeding	G. BERN	

Does this card contain any records?

- ☐ Yes
- ☐ No
- ☐ Non-Typical Card

Need some help with this task?

Back

Done

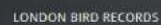
Show the project tutorial

This project has been built using the Zooniverse Project Builder but is not yet

ZOOIVERSE

SURREY 19 69 70				C. CROW	280
SANDERSTAD	JAN		up to 6 feeding in garden. Increasing or getting bolder.	LW. CORNELIUS	
THORP/SEYBOLD	JAN/JUN		continues to increase, doing much damage to ground nesting birds		
LARIT ELMS RES			(6/25)	F. MCABELL	
CREYDON Bnd. Hdb	MAR/APR	c.200	Roosting in fields.	ST. RUCK	
	JUL 26	130	Roosting 12 having Albino traces 1 with white secondaries		
KEN GUNS		80+	increased especially post/winter	L. BAKER	
RYSON DOWN	JUN 15	c.150	in common site feeding daily	CH. DUNKLEY	
MERTHAM	DEC	1	white carpal patches on wing surface 6/22/9535	JW. HALLSTER	





ABOUT

CLASSIFY

BIRD LIST

[illegible]

What is the location of the observation?

Swanscombe

What is the date of the observation? (DD/MM/YYYY)

16/04/1971

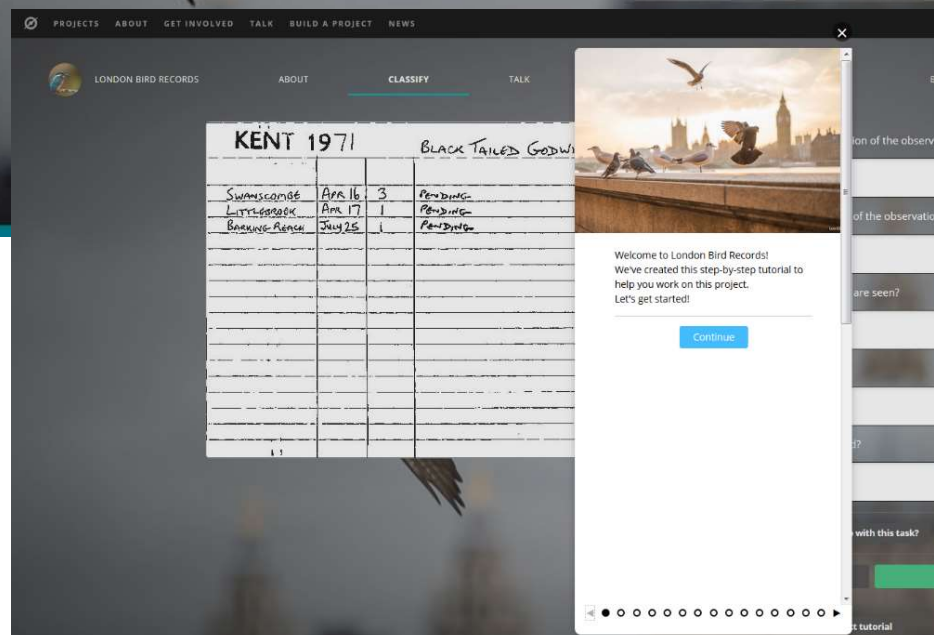
How many birds are seen?

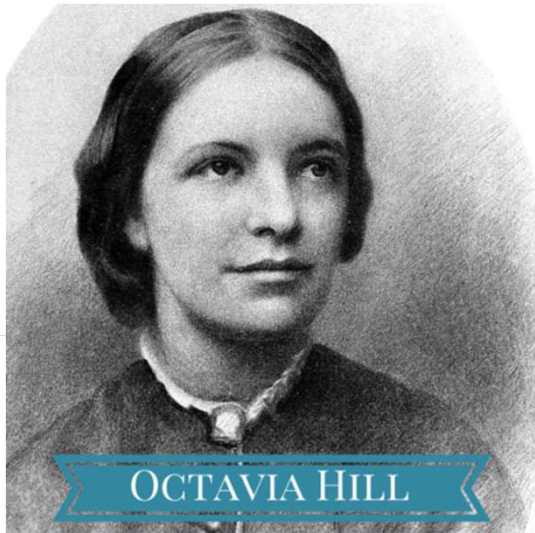
3

Pending

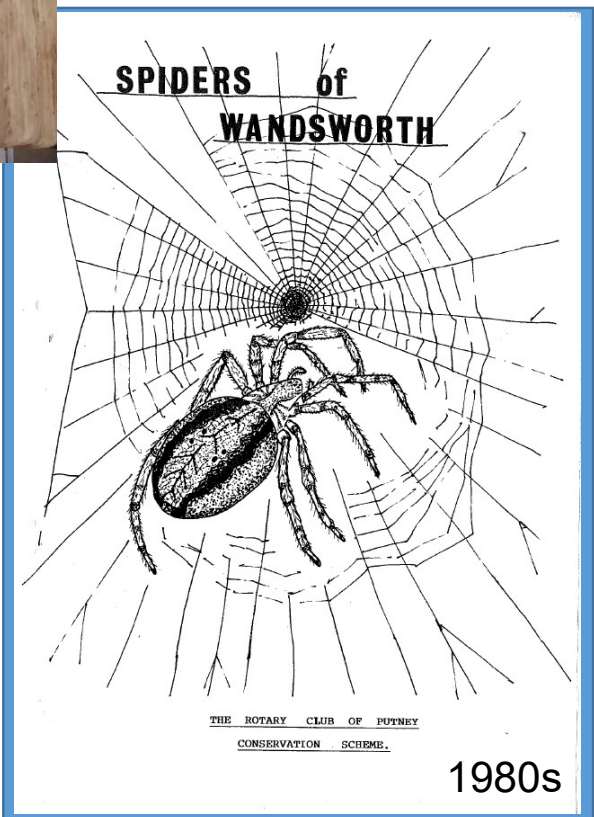
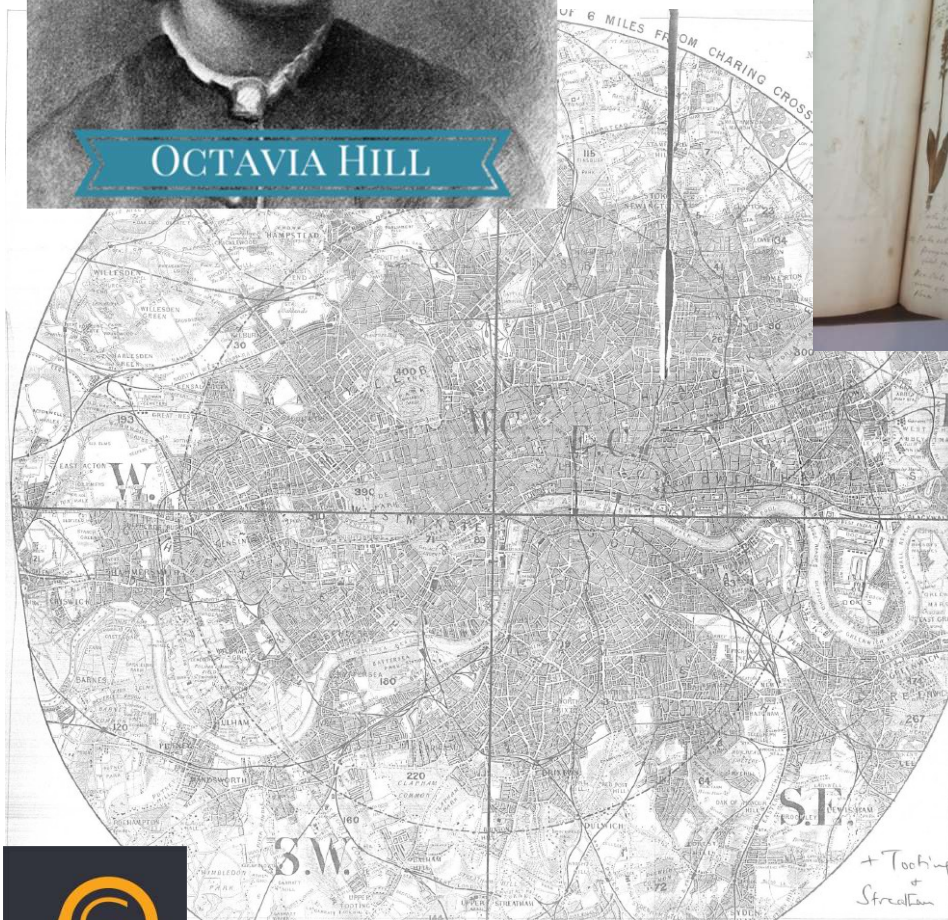
Who saw the bird?

L. F. Woollard





OCTAVIA HILL



SPIDERS of WANDSWORTH

THE ROTARY CLUB OF PUTNEY
CONSERVATION SCHEME.

1980s



©David Darrell-Lambert



Revealed: the insidious creep of pseudo-public space in London

Pseudo-public space - squares and parks that seem public but are actually owned by corporations - has quietly crept across the city, according to a new map by the Guardian.

maps its full culture of security, protesting, taking

- Explore the map
- Bradley L. Gar
- Jeremy Corbyn

theguardian

home UK politics world sport football opinion culture business lifestyle fashion environment tech travel

browse all sections

home > world > cities development europe US americas asia australia africa middle east

Cities

Pseudo-public space: explore the map - and tell us what we're missing

Guardian Cities and Greenspace Information for Greater London CIC (GiGL) have created the first comprehensive map of pseudo-public spaces in the UK capital. We're looking for your help to make it better

- [Revealed: the insidious creep of pseudo-public space in London](#)
- [Spotted something missing? Tell us how we can make our map better](#)



London's privately owned public space, mapped. Scroll down to the table for key

Advertisement



Most popular



Donald Trump Jr schooled on Twitter after Halloween



Privately Owned Public Spaces (POPS)



jennifer saunders

@ferrifrump

Follow

worth reading

Guardian Cities @guardiancities

Pseudo-public space has quietly spread across cities worldwide [theguardian.com/cities/2017/ju...](https://theguardian.com/cities/2017/jul/26/pseudo-public-space) #RC100

6:32 am - 26 Jul 2017

14 Retweets 42 Likes



3

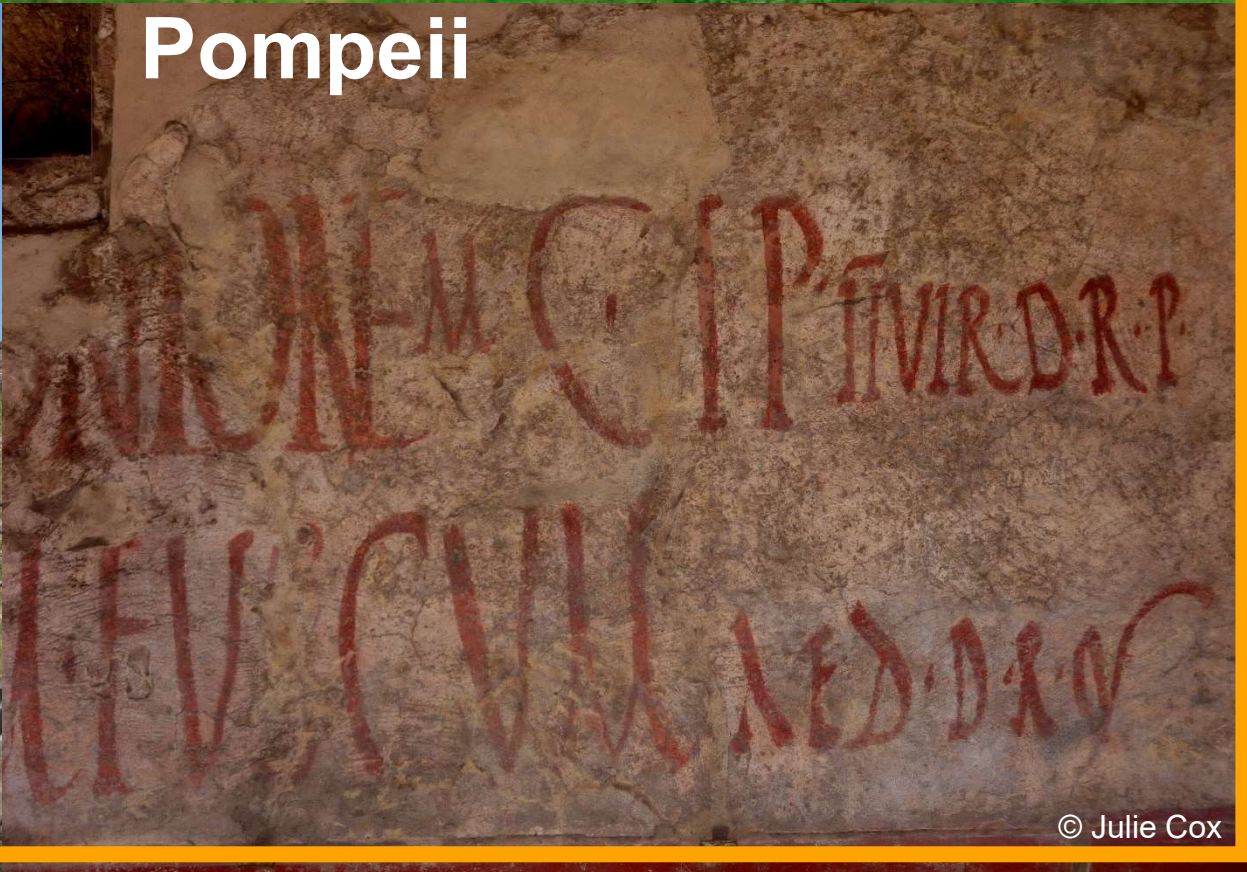
14

42

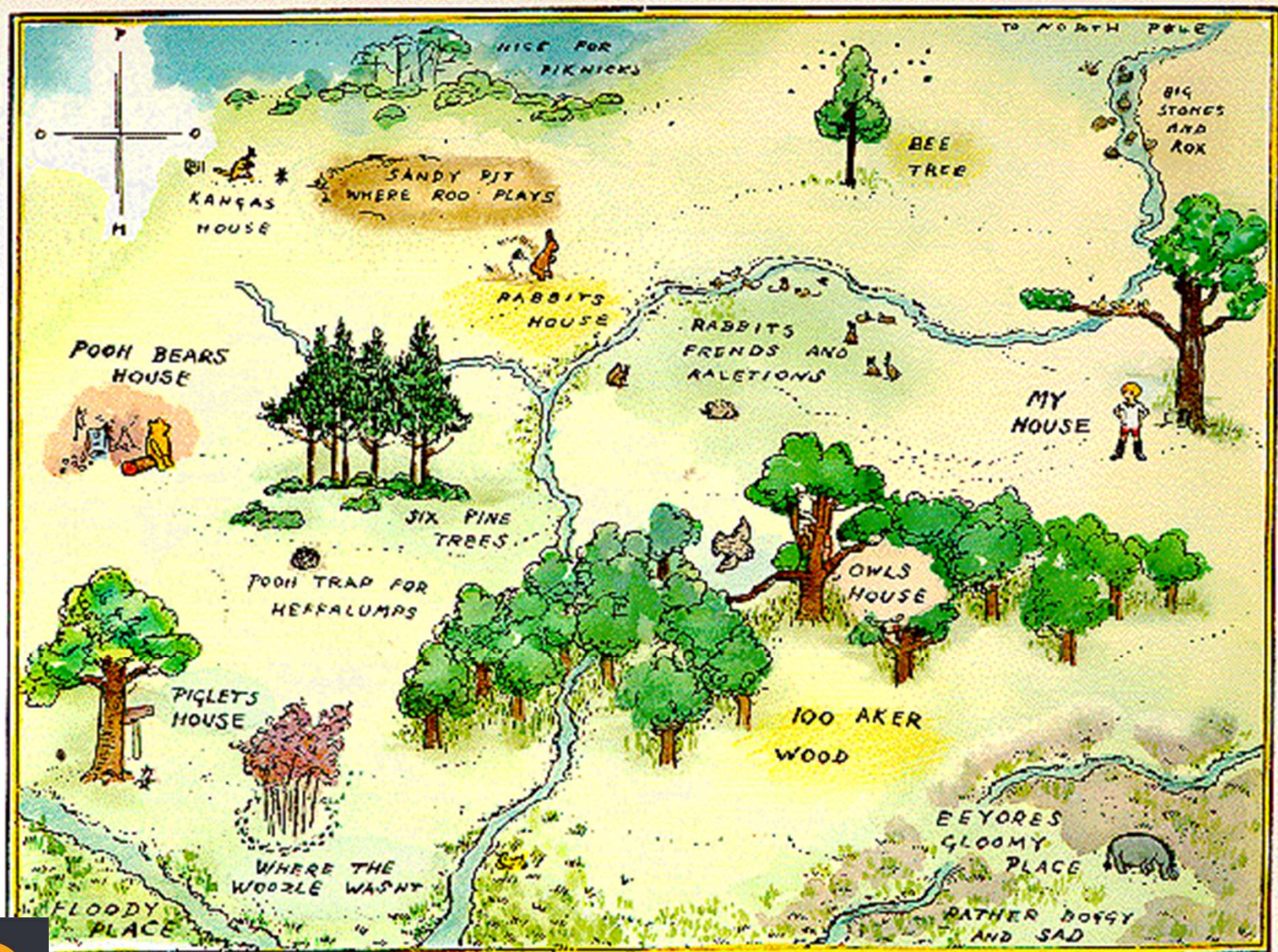




London Pompeii



© Julie Cox



DRAWN BY ME AND MR SHEPARD HELPD



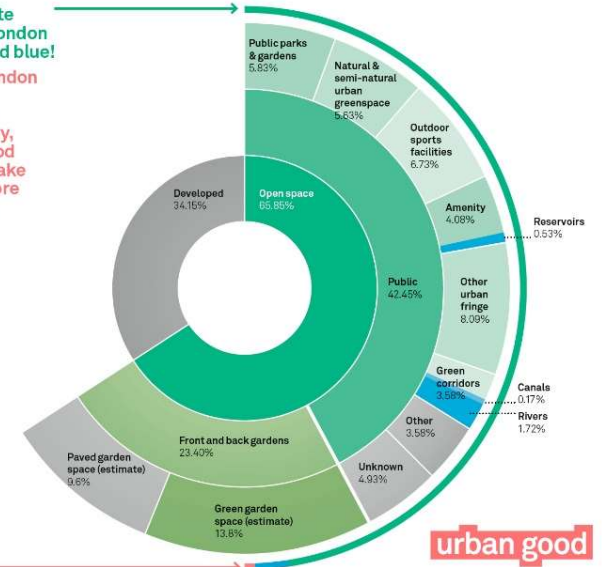
urban good

Greater London by land use

Based on data provided by GIGL, here is the breakdown of different green and blue spaces within the GLA boundary.

We estimate
49.5% of London
is green and blue!

Making London
greener
will boost
biodiversity,
reduce flood
risk and make
the city more
beautiful.



urban good





acorn

adder

ash

beech

bluebell

buttercup

catkin

conker

cowslip

cygnet

dandelion

fern

hazel

heather

heron

ivy

kingfisher

lark

mistletoe

nectar

newt

otter

pasture

willow



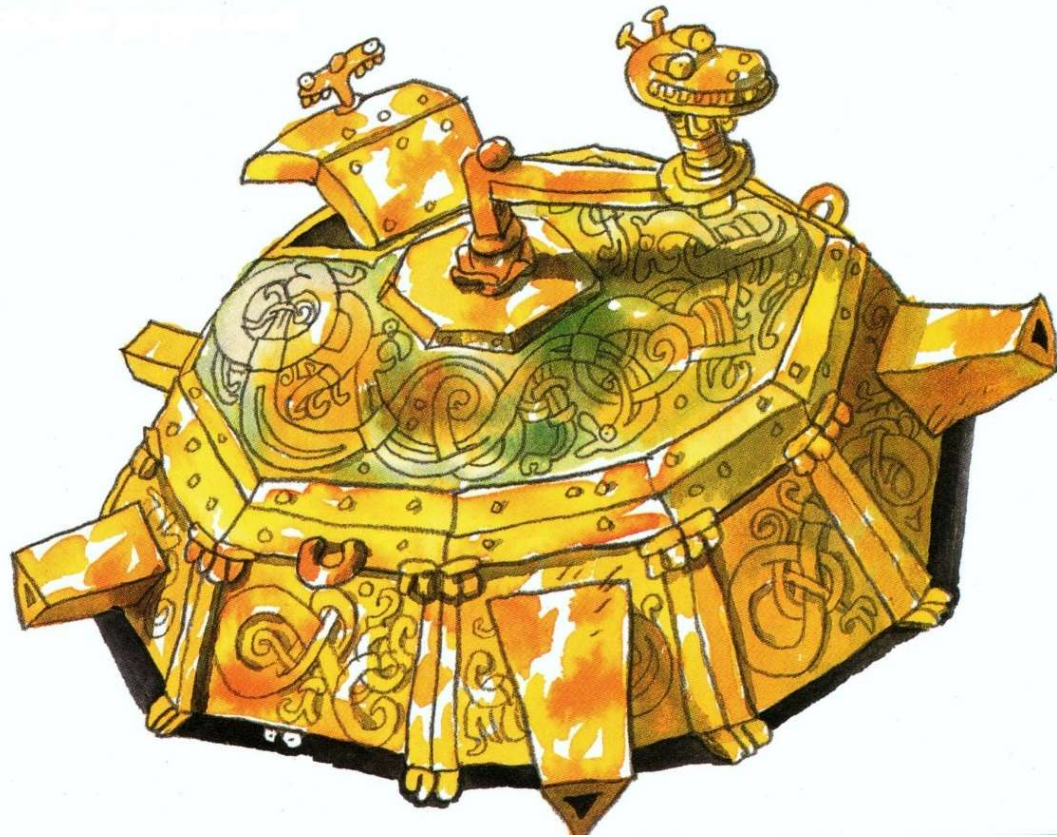


Illustration © Mauri Kunnas



©Penny Frith

Maria.Longley@gigl.org.uk
www.gigl.org.uk

