

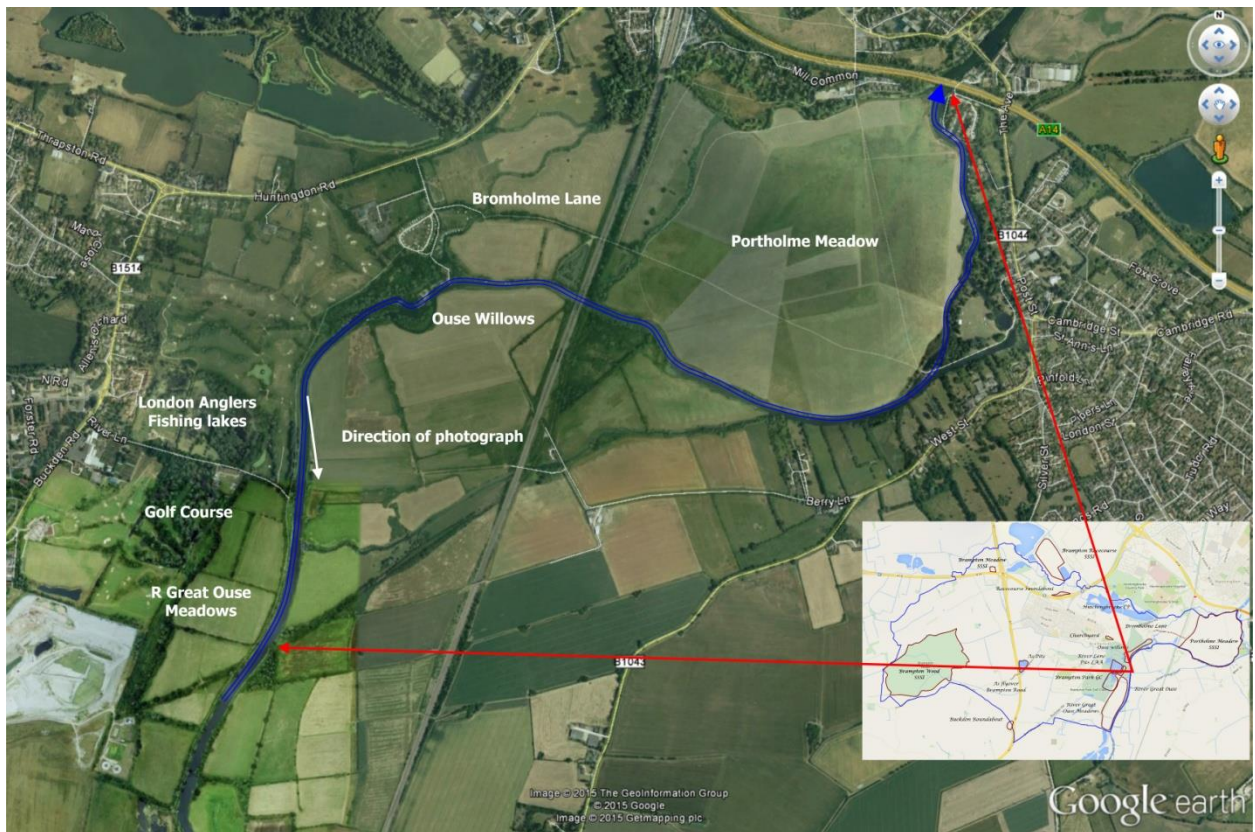


## Brampton Biodiversity Project

# Hotspot Report, River Great Ouse TL 223707 to TL 242713

[Dr J Patrick Doody, January 2016, email [jp.doody@ntlworld.com](mailto:jp.doody@ntlworld.com)]

The River Great Ouse forms the major part of the south eastern boundary of Brampton Parish. It flows from the Bedfordshire/Buckinghamshire county border through Bedford, St Neots, Huntingdon, St Ives and on, via the Ouse Washes (an Internationally important Special Area of Conservation) into the Wash. Bordering the river are a number of other Parish 'Hot Spots', these are shown on the location map below.



### Location map:

The river is relatively slow moving and has a rich flora and fauna. These include floating water plants such as *Nuphar lutea* Yellow Water-lily, bank side vegetation with *Phragmites australis* Common Reed and a wide variety of animals. This bank side vegetation provides nesting habitat for species such as Reed Warbler *Acrocephalus arundinaceus*, a summer visitor from sub-Saharan Africa. Otters inhabit the river. In summer dragonflies, damselflies and butterflies abound. During the course of the biodiversity project, we visited the river on several occasions. The 1st June 2013 was also a Community recording day. The lists below are not exhaustive but provide an indication of the variety of plants and animals living along the river. Together with the other 'Hot Spot' reports, it is clear that the river valley is a major feature with abundant wildlife.



**Photograph:** a typical view of the river near River Lane



**Dragonflies and Damselflies**

- Aeshna grandis* Brown Hawker
- Aeshna mixta* Migrant Hawker
- Calopteryx splendens* Banded Demoiselle
- Coenagrion puella* Azure Damselfly
- Enallagma cyathigerum* Common Blue Damselfly
- Erythromma najas* Red-eyed Damselfly
- Ischnura elegans* Blue-tailed Damselfly
- Lestes sponsa* Emerald Damselfly
- Libellula fulva* Scarce Chaser
- Platycnemis pennipes* White-legged Damselfly
- Sympetrum striolatum* Common Darter

**Photograph:** White-legged Damselfly

Additional record *Orthetrum cancellatum* Black-tailed Skimmer Val Perrin 03/07/1994

**Butterflies**

- Aglais io* Peacock
- Aglais urticae* Small Tortoiseshell
- Anthocharis cardamines* Orange Tip
- Gonepteryx rhamni* Brimstone
- Maniola jurtina* Meadow Brown
- Pararge aegeria* Speckled Wood
- Pieris napi* Green-veined White
- Polygonia c-album* Comma
- Pyronia tithonus* Gatekeeper
- Vanessa atalanta* Red Admiral
- Vanessa cardui* Painted Lady

**Photograph:** Gatekeeper butterfly



## Birds recorded along the river

Blackbird *Turdus merula*  
Blackcap *Sylvia atricapilla*  
Black-headed Gull *Chroicocephalus ridibundus*  
Blue Tit *Cyanistes caeruleus*  
Buzzard *Buteo buteo*  
Canada Goose *Branta canadensis*  
Carrion Crow *Corvus corone*  
Chaffinch *Fringilla coelebs*  
Chiffchaff *Phylloscopus collybita*  
Collared Dove *Streptopelia decaocto*  
Common Tern *Sterna hirundo*  
Coot, *Fulica atra*  
Cormorant *Phalacrocorax carbo*  
Cuckoo *Cuculus canorus*  
Gadwall, *Anas strepera*  
Goldfinch, *Carduelis carduelis*  
Great Tit, *Parus major*  
Great-spotted Woodpecker *Dendrocopos major*  
Green Woodpecker *Picus viridis*  
Grey wagtail *Motacilla cinerea*  
Greylag Goose, *Anser anser*  
Grey Heron *Ardea cinerea*  
Jackdaw, *Corvus monedula*  
Kestrel *Falco tinnunculus*

Kingfisher *Alcedo atthis*  
Lapwing, *Vanellus vanellus*  
Long-tailed Tit *Aegithalos caudatus*  
Magpie, *Pica pica*  
Mallard *Anas platyrhynchos*  
Moorhen, *Gallinula chloropus*  
Oyster Catcher *Haematopus ostralegus*  
Pheasant, *Phasianus colchicus*  
Red Kite *Milvus milvus*  
Redwing, *Turdus iliacus*  
Reed Bunting, *Emberiza schoeniclus*  
Robin, *Erithacus rubecula*  
Rook, *Corvus frugilegus*  
Sedge Warbler *Acrocephalus schoenobaenus*  
Shoveler, *Anas clypeata*  
Starling *Sturnus vulgaris*  
Swallow, *Hirundo rustica*  
Mute Swan *Cygnus olor*  
Teal, *Anas crecca*  
Tree Creeper *Certhia familiaris*  
Tufted Duck, *Aythya fuligula*  
Woodpigeon, *Columba palumbus*  
Wren, *Troglodytes troglodytes*

Two unusual species are Red-necked Grebe *Podiceps grisegena* 20/10/2012 (see picture) and Bittern *Botaurus stellaris* 26/12/2010.



## Plants

### Community recording day 01/06/2013 records collated by Peter Walker

*Carex acutiformis* Lesser Pond Sedge  
*Carex riparia* Greater Pond Sedge  
*Cerastium fontanum* Common Mouse-ear  
*Cirsium arvense* Creeping Thistle  
*Cirsium vulgare* Spear Thistle  
*Crepis viscaria* Beaked Hawks- Beard  
*Dactylus glomerata* Cocksfoot Grass  
*Deschampsia cespitosa* Tufted hair Grass  
*Dipsacus fullonum* Common Teasle  
*Epilobium hirsutum* Great Willowherb  
*Galium aparine* Cleavers  
*Geranium robertianum* Herb Robert  
*Glechoma hederacea* Ground Ivy  
*Glyceria maxima* Reed Sweet Grass  
*Hedera helix* Ivy  
*Humulus lupulus* Hop  
*Iris pseudocorus* Yellow Flag

*Lamium album* White Dead-nettle  
*Nuphar lutea* Yellow Waterlily  
*Phragmites australis* Common Reed  
*Plantago lanceolata* Ribwort Plantain  
*Plantago major* Greater Plantain  
*Poa nemoralis* Woodland Meadow Grass  
*Poa trivialis* Rough Stalked Meadow Grass  
*Polygonum persicaria* Common Persicaria  
*Potentilla anserina* Silverweed  
*Ranunculus acris* Meadow Buttercup  
*Ranunculus repens* Creeping Buttercup  
*Rosa sp.* Wild Rose  
*Rubus sp.* Bramble  
*Rumex acetosa* Common Sorrel  
*Rumex crispus* Curled Dock  
*Rumex sanguinea* Red-veined Dock  
*Senecio jacobea* Common Ragwort  
*Silene alba* White Campion  
*Sparganium sp.* Bur-reed  
*Taraxacum officinale* agg. Dandelion

*Trifolium pratense* Red Clover  
*Trifolium repens* White Clover  
*Urtica dioica* Stinging Nettle  
*Veronica chamaedrys* Germander Speedwell

**Additional species**

*Lemna gibba* Common Duckweed  
*Artemisia vulgaris* Mugwort  
*Lythrum salicaria* Purple Loostripe  
*Ranunculus scleratus* Celery-leaved Buttercup

*Lycopus europaeus* Gypsywort  
*Calystegia sepium* Hedge Bindweed  
*Stachys palustris* Marsh Woundwort  
*Euonymus europaeus* Spindle  
*Heracleum sphondylium*  
*Crataegus monogyna* Hawthorn  
*Arctium lappa* Greater Burdock  
  
*Laetiporus sulphureus* Chicken of the Woods