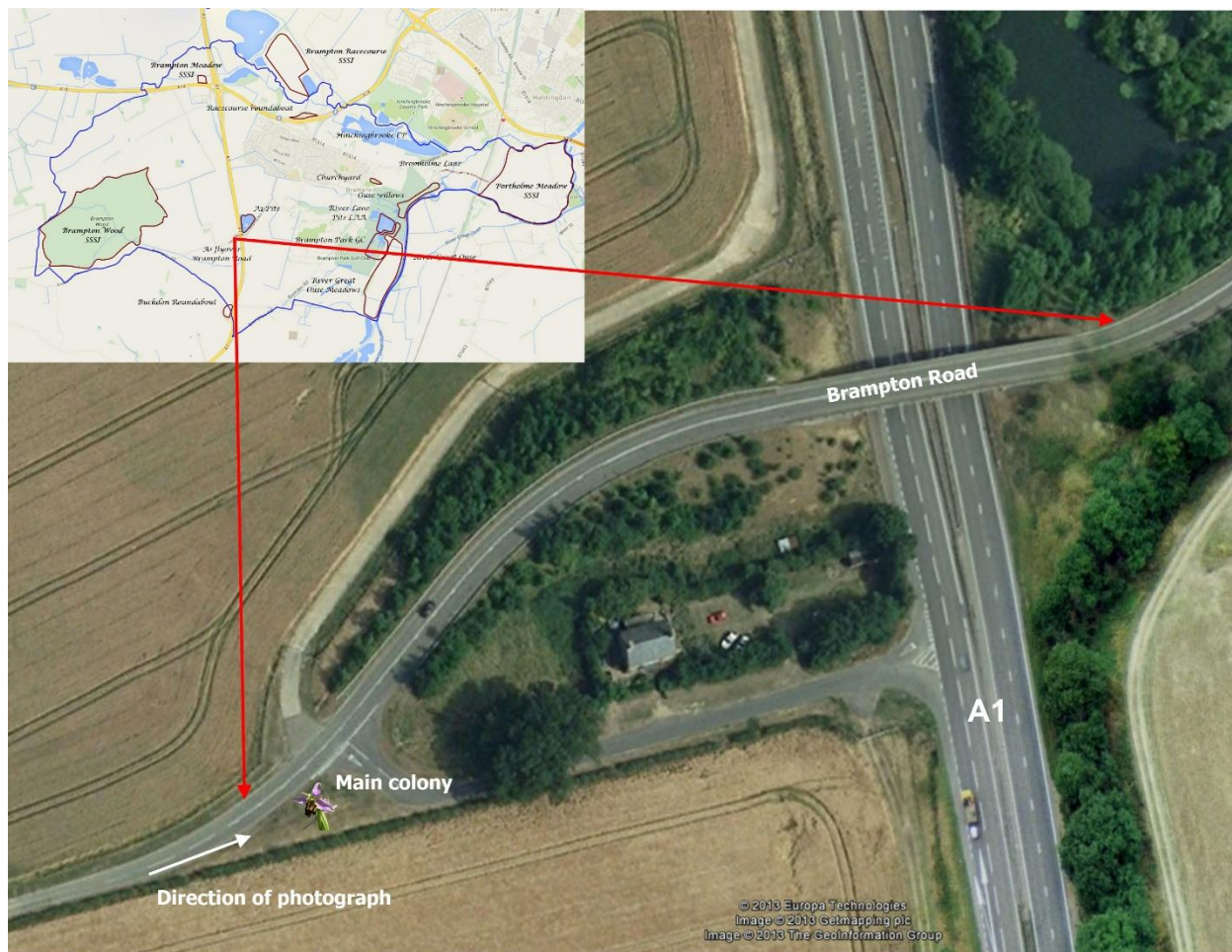




## Brampton Biodiversity Project

### Hotspot Report, A1 Flyover TL197699

(Dr J Patrick Doody, November 2015, email [jp.doody@ntlworld.com](mailto:jp.doody@ntlworld.com))



#### Location map:

On the 21<sup>st</sup> June 2007, a colony of flowering Bee Orchid (*Ophrys apifera*) appeared on the west side of the A1 on Brampton Road. Further inspection revealed plants not only on the area shown in the picture below, but also scattered along the road verge leading towards Brampton.

This, the 'main' colony lies in species poor grassland with:

*Achillea millefolium*, Yarrow  
*Anacamptis pyramidalis*, Pyramidal Orchid  
*Arrhenatherum elatius*, False Oat-grass  
*Bellis perennis*, Daisy  
*Brassica nigra*, Black Mustard  
*Bromus hordeaceus*, Soft-brome

*Cochlearia danica*, Danish Scurvy-grass  
*Conium maculatum*, Hemlock  
*Dactylis glomerata*, Cock's-foot  
*Geranium pusillum*, Small-flowered Crane's-bill  
*Helminthotheca echinoides*, Bristly Oxtongue  
*Heracleum sphondylium*, Hogweed

*Hyacinthoides non-scripta*, Bluebell  
*Hypochaeris radicata*, Cat's-ear  
*Lamium album*, White Dead-nettle  
*Lepidium draba*, Hoary Cress\*  
*Lolium perenne*, Perennial Rye-grass  
*Medicago lupulina*, Black Medick  
*Ophrys apifera*, Bee Orchid  
\*Non-native

*Papaver somniferum* subsp. *Somniferum*, Poppy\*  
*Plantago lanceolata*, Ribwort Plantain  
*Salvia verbenaca*, Wild Clary  
*Senecio jacobaea*, Common Ragwort  
*Silene latifolia*, White Campion  
*Spergula arvensis*, Corn Spurrey  
*Vicia hirsuta*, Hairy Tare

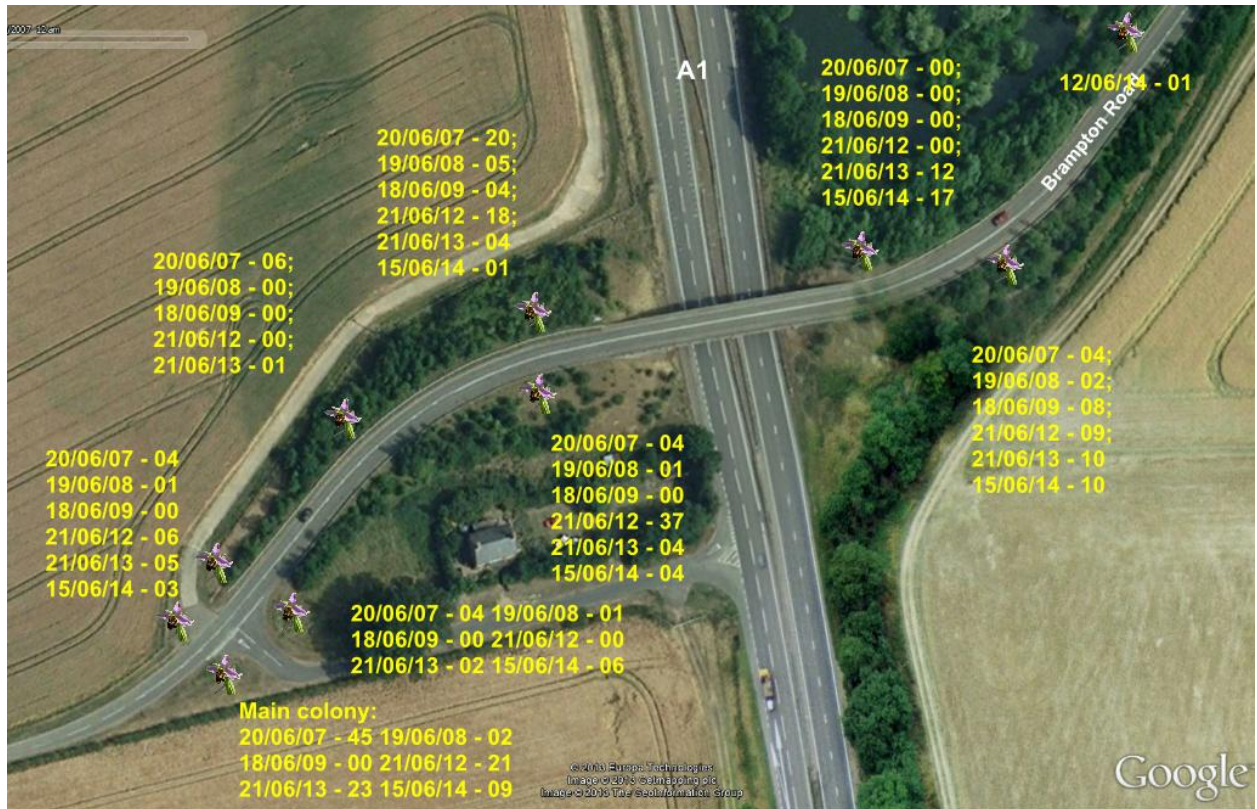
The plants lying along the roadside are in a narrow open strip near to a metal crash barrier. Realignment of this section of the A1 took place about twenty years ago when the A1 was straightened and the new flyover built. There are no previous records of this colony. [Note most of the flowering spikes were lost the following day, when the grassland was mown, only three remained.]



Site of the 'Main' colony 21st June 2007

Since then further surveys have revealed a wide scatter of plants in both roadside grassland and open scrub. The figure below shows their distribution and number of flowering spikes up to 2014. 2007 was the 'best year' for the main colony. Orchids generally have 'good' and 'bad' flowering years. However, the increase in number of flowing spikes at the locations along the road where no mowing has taken place suggests it may have had a detrimental effect on the 'main' colony. Plants were also present in 2015, but much less in number. These were not counted.





#### Location bee orchid colonies Bampton Road, Cambridgeshire 2007 - 2014

*Anacamptis pyramidalis* – one plant present 12/07/2012 in the same location as the ‘main colony’ of bee orchids.

The developments associated with a new 10 lane A1/A14 will obliterate this site and with it most of the grassland. Isolated peripheral colonies may survive. Work on this new road is scheduled to begin in 2017.

---